

Kansas Ornithological Society

BULLETIN

PUBLISHED QUARTERLY

Vol. 42

March, 1991

No. 1

THE WINTER BIRD COUNT FOR 1990

John L. Zimmerman

Bryon Walker reported the poorest count ever conducted in Kingman County with a total of only 30 species on a foggy, snow-spitting day, while Gene Lewis commented on their record count of 83 species at Topeka in spite of continuing encroachment by urban sprawl into natural areas. In short, the Kansas winter bird count was typical — some counts were below expectations, others above, and still others about what they have been in the past. The state continues to get better geographic coverage with the addition of four new count circles — El Dorado in the south, Kirwin in the north, Liberal in the southwest, and Olsburg in the northeast. The bouts of freezing rain that pelted the state during the count period, however, prevented some circles covered in the past from being completed this year; yet this year's total of 35 counts is second only to the 36 counts completed in 1988. Nor did the total of 593 participants exceed the 1988 total, but this year's counters were diligent and accumulated a record number of 152 species.

The Forster's Tern that had been present for a couple of weeks below the dam at Tuttle Creek Lake lingered long enough to be observed on count day at Manhattan; and although being found from time to time in past winters, the Pacific Loon seen at Lawrence joined the tern as a newly added species for the Kansas winter count, bringing the cumulative total of 234 species.

It was certainly a gull year. A Franklin's Gull at Topeka, a Thayer's at Lawrence, Glaucous Gulls at Lawrence and El Dorado Lake, and Bonaparte's Gulls on 17% of the counts — including 256 individuals at Lawrence and 171 at Wilson Lake in Russell County. Yet Bob LaShelle at Junction City didn't think so; he wondered in his summary where the gulls were, since there were zero gulls in his count circle when usually there are hundreds.

Out in the mixed-grass prairie it was an *Asio* owl year. The drought of the past two years permitted nitrogen to accumulate in the soil so that when the rains finally came, the grass grew luxuriously and apparently supported a dense rodent population. Most of us saw this reflected in greater numbers of Northern Harriers, but at Cedar Bluff Reservoir it produced 116 Long-eared Owls and 23 Short-eared Owls! While numbers of these species elsewhere were not as spectacular, they were reported on 17% of the counts across Kansas.

There were some other noteworthy concentrations of birds around the state. The Olathe count could only find 9 robins, and Steve Crawford suggested that their birds were over in Manhattan where 102,151 individuals were recorded. Liberal and Scott Lake exemplified the High Plains by reporting 47,001 Lapland Longspurs and 32,809 Horned Larks respectively. Less pleasing perhaps, but no less spectacular were the 20,000 starlings at the Harvey County landfill mentioned by Dwight Platt. Kirwin celebrated its initial year by not only providing 23 Ross' Geese, but also 41,000 Canadas and 8,500 Common Mergansers. Down at Quivira on a bitter day, 1,083 Sandhill Cranes were still present, but appeared to be succumbing to the cold as evidenced by numerous carcasses littering the ice. Although to be expected in abundance in the northeast, the 50,000 Snow Geese at Leavenworth-Atchison is impressive (as are their 26,000 Red-

winged Blackbirds). The 152 Double-crested Cormorants at Lawrence and the 71 Bald Eagles at Manhattan are also record numbers for the Kansas winter bird count.

It was not a Mountain Bluebird year, this species only being recorded at Wilson Lake and Cedar Bluff. But it was a year for that other montane thrush, the Townsend's Solitaire. This species occurred on 46% of the counts from Baldwin City on the east to the Cimarron Grasslands on the west, with a record 37 individuals at Scott Lake. And it was the year that the House Finch, expanding westward from the Missouri border and eastward from its earlier foothold in the southwestern quarter, finally spanned the entire state, occurring on 63% of the counts.

While Cimarron National Grasslands usually leads the list of circles with unique species, this year Sebastian Patti reported only four species that were found nowhere else (Ladder-backed Woodpecker, Curve-billed Thrasher, Lark Bunting, McCown's Longspur) to take second place. Lawrence came up with the most this year (Pacific Loon, Common Loon, Eared Grebe, Oldsquaw, Thayer's Gull, and Sedge Wren). Okaloosa-Perry Lake found three species that were seen on no other count (Black Scoter, Red-breasted Merganser, and Hermit Thrush). Manhattan, Topeka, and Scott Lake each had two unique species, while the following counts each had one unique species: Arkansas City, Junction City, Liberal, Linn County, Olsburg, Western Stafford County, Wichita, and Yoder. Although not seen on count day, the Audubon's Yellow-rumped Warbler seen during the count period at Junction City is worth noting, since typically the yellow-rumps seen in the state (40% of the counts this year) are the eastern subspecies.

While the presence of single observations of species is noteworthy, the wide-spread occurrence of others is equally significant. The following species were recorded on at least 80% of the counts: Mallard, Northern Harrier, Red-tailed Hawk, American Kestrel, Northern Bobwhite, Rock Dove, Great Horned Owl, Red-bellied Woodpecker, Downy Woodpecker, Hairy Woodpecker, Northern Flicker, Horned Lark, Blue Jay, American Crow, Black-capped Chickadee, White-breasted Nuthatch, American Robin, European Starling, Northern Cardinal, American Tree Sparrow, Song Sparrow, Harris' Sparrow, Dark-eyed Junco, Red-winged Blackbird, *Sturnella* sp., American Goldfinch, House Sparrow.

And lastly, while all count participants have an enjoyable day working hard to cover their circles, some experience even more rewarding events. Bunnie Watkins reported that the American White Pelican that they discovered on the Pomona count actually was frozen by its feet into the shoreline ice. It was taken to the wildlife conservation officer's home, who warmed it by the fire and subsequently released it to fly free again.

Arkansas City. 37° 02'N, 97° 02'W. Center intersection U.S. 77 and Arkansas River. Habitat coverage: riparian forest 21%, oldfields and fencerows 20%, grasslands 16%, cultivated fields 14%, residential areas 11%, lakes and rivers 11%, upland deciduous forest 4%, coniferous stands 3%. 22 December 1990, 7:30 a.m. to 5 p.m., -1° to 2°F; Wind N, 5-10 m.p.h.; still waters frozen, moving waters partly open. Ten observers in 6 parties. Total party-hours 35 (14 on foot, 21 by car). Total party-miles 301 (14 on foot, 287 by car).

Great Blue Heron 9, Canada Goose 207, Green-winged Teal 2, Mallard 112, American Wigeon 2, Common Merganser 31, Bald Eagle 28, Northern Harrier 9, Red-tailed Hawk 30, Rough-legged Hawk 1, *Buteo* sp. 2, American Kestrel 8, Ring-necked Pheasant 4, Northern Bobwhite 22, Killdeer 1, Common Snipe 1, Ring-billed Gull 2, Rock Dove 31, Mourning Dove 8, Great Horned Owl 3, Barred Owl 1, Belted Kingfisher 3, Red-headed Woodpecker 19, Red-bellied Woodpecker 53, Yellow-bellied Sapsucker 1, Downy Woodpecker 33, Hairy Woodpecker 6, Northern (Yellow-shafted) Flicker 32, Northern (Red-shafted) Flicker 3, Northern Flicker ssp. 12, Pileated Woodpecker 1, Horned Lark 663, Blue Jay 106, American Crow 130, Carolina Chickadee 153, Tufted Titmouse 58, White-breasted Nuthatch 14, Brown Creeper 12, Carolina Wren 6, Golden-crowned Kinglet 11, Eastern Bluebird 15, American Robin 177, Northern Mockingbird 9, Water Pipit 2, Cedar Waxwing 46, European Starling 3400, Yellow-rumped (Myrtle) Warbler 10, Northern Cardinal 453, Rufous-sided Towhee 4, American Tree Sparrow 641, Field

Sparrow 1, Song Sparrow 20, Lincoln's Sparrow 3, White-throated Sparrow 5, White-crowned Sparrow 3, Harris' Sparrow 999, Dark-eyed (Slate-colored) Junco 1081, Dark-eyed (Oregon) Junco 9, Red-winged Blackbird 1737, *Sturnella* sp. 403, Brewer's Blackbird 82, Common Grackle 16, Brown-headed Cowbird 15, Purple Finch 2, House Finch 14, Pine Siskin 3, American Goldfinch 186, House Sparrow 879. Total 64 species (2 additional subspecies), about 12,045 individuals. Seen in area during count period, but not on count day — Rusty Blackbird.

Wallace Champeny, Rick Goodrick, Rex Herndon, Mike Lesan, Jean Roark, Miriam Roark, Eddie Stegall, Savilla Stegall, Don Vannoy (compiler — 2458 Coolidge, Wichita, KS 67204), Gerald Wiens.

Baldwin. 38° 47'N, 95° 16'W. Center junction U.S. 56 and U.S. 59. Habitat coverage: not recorded. 16 December 1990, 5:30 a.m. to 5:30 p.m., 32° to 40°F; Wind SE, 5-10 m.p.h.; waters partly frozen; overcast; drizzle in p.m. Sixteen observers in 7 parties and 4 observers at feeders. Total party-hours 46 (8 on foot, 38 by car) plus 3.25 hrs owling and 13 hrs at feeders. Total party-miles 396 (16 on foot, 380 by car) and 35 miles owling.

Pied-billed Grebe 1, Great Blue Heron 4, Canada Goose 58, Green-winged Teal 3, Mallard 102, Gadwall 3, American Wigeon 3, Canvasback 1, Redhead 1, Common Goldeneye 30, Bufflehead 35, Hooded Merganser 5, Common Merganser 1, Northern Harrier 6, Sharp-shinned Hawk 1, Cooper's Hawk 1, Red-tailed Hawk 133, American Kestrel 44, Wild Turkey 4, Common Snipe 1, Ring-billed Gull 1, Rock Dove 49, Mourning Dove 11, Eastern Screech-owl 4, Great Horned Owl 24, Barred Owl 2, Belted Kingfisher 5, Red-headed Woodpecker 3, Red-bellied Woodpecker 48, Downy Woodpecker 55, Hairy Woodpecker 11, Northern (Yellow-shafted) Flicker 56, Pileated Woodpecker 1, Horned Lark 290, Blue Jay 168, American Crow 314, Black-capped Chickadee 170, Tufted Titmouse 64, White-breasted Nuthatch 26, Brown Creeper 3, Carolina Wren 11, Winter Wren 1, Golden-crowned Kinglet 12, Eastern Bluebird 46, Townsend's Solitaire 1, American Robin 254, Northern Mockingbird 7, Cedar Waxwing 420, Loggerhead Shrike 6, European Starling 1197, Yellow-rumped (Myrtle) Warbler 2, Northern Cardinal 434, American Tree Sparrow 349, Song Sparrow 35, Lincoln's Sparrow 1, Swamp Sparrow 1, White-throated Sparrow 2, White-crowned Sparrow 2, Harris' Sparrow 56, Dark-eyed (Slate-colored) Junco 298, Dark-eyed (Oregon) Junco 4, Dark-eyed Junco ssp. 92, Lapland Longspur 3, Red-winged Blackbird 651, Eastern Meadowlark 58, *Sturnella* sp. 311, Common Grackle 100, Brown-headed Cowbird 1, Purple Finch 4, American Goldfinch 184, House Sparrow 594. Total 68 species (2 additional subspecies), about 6,882 individuals.

Genny Agin, Jan and Margaret Boyd, Roger Boyd (compiler — Biology Dept., Baker Univ., Baldwin City, KS 66006), Tom Church, Calvin Cink, Faye Heckman, Chick Hood, Scott and Tony Ikenberry, Katherine Kelley, Barbara and Martin Pressgrove, Bill Rice, Melva Roberts, Jeff Rupert, Floyd Schmidt, Ruth Scott, Joyce and Ron Wolf. (Baldwin Bird Club).

Byron Walker Wildlife Area. 37° 36'N, 98° 16' W. Center headquarters of the Byron Walker Wildlife Area. Habitat coverage: cultivated fields 50%, riparian woodland 25%, grassland 17%, lakes and rivers 8%. 2 January 1991. 7:30 a.m. to 5:30 p.m., 18° to 20° F; Wind N, 3-10 m.p.h.; moving water partly frozen, still water frozen; cloudy; foggy; "spitting" snow. Five observers in 2 parties. Total party-hours 12 (3 on foot, 9 by car). Total party-miles 182 (3 on foot, 179 by car).

Canada Goose 176, Mallard 11, Bald Eagle 2, Northern Harrier 5, Red-tailed Hawk 15, American Kestrel 5, Ring-necked Pheasant 7, Northern Bobwhite 17, Rock Dove 10, Mourning Dove 2, Great Horned Owl 1, Red-bellied Woodpecker 1, Downy Woodpecker 1, Northern (Yellow-shafted) Flicker 11, Northern (Red-shafted) Flicker 1, Horned Lark 370, American Crow 104, Black-capped Chickadee 12, Tufted Titmouse 3, Eastern Bluebird 12, American Robin 530, European Starling 587, Northern Cardinal 15, American Tree Sparrow 335, Song Sparrow 11, Harris' Sparrow 181, Dark-eyed (Slate-colored) Junco 48, Dark-eyed (Oregon) Junco 9, Red-winged Blackbird 406. East-

ern Meadowlark 97, American Goldfinch 37, House Sparrow 511. Total 30 species (2 additional subspecies), about 3,533 individuals. Seen in area during count period, but not on count day — Rusty Blackbird.

John Boyer, Wilma Hawkins, Gene Krehbiel, Byron Walker (compiler — 235 West Copeland, Kingman, KS 67068), June Walker.

Camp Naish, Wyandotte Co. 39° 04'N, 94° 52'W. Center corner of sections 21, 22, 27, and 28, T11S, R23E. Habitat coverage: upland deciduous forest 40%, riparian forest 40%, oldfields and fencerows 10%, grasslands 5%, swamp 2%, residential areas 2%, lakes and rivers 1%. 22 December 1990. 6:30 a.m. to 5 p.m., -1° to 4° F; Wind NW, 6 m.p.h.; overcast with occasional light snow, ground 95% snow covered, ice cover about 95% of water surfaces. Three observers in 1 party. Total party-hours 8.5 (7.5 on foot, 1 by car). Total party-miles 9 (8 on foot, 1 by car) and 1.5 miles owling.

Snow Goose 670, Canada Goose 50, Mallard 1, Bald Eagle 1, Red-tailed Hawk 2, Northern Bobwhite 8, Rock Dove 6, Eastern Screech-owl 3, Red-bellied Woodpecker 18, Downy Woodpecker 8, Hairy Woodpecker 3, Northern Flicker ssp. 15, Blue Jay 15, American Crow 11, Black-capped Chickadee 34, Tufted Titmouse 16, White-breasted Nuthatch 3, Carolina Wren 3, Winter Wren 3, Golden-crowned Kinglet 11, Eastern Bluebird 18, European Starling 9, Yellow-rumped (Myrtle) Warbler 1, Northern Cardinal 25, American Tree Sparrow 1, Fox Sparrow 2, Song Sparrow 13, Dark-eyed Junco ssp. 45, American Goldfinch 17, House Sparrow 8. Total 30 species, about 1,020 individuals.

Alexis Powell, David Reber, Stan Roth (compiler — Lawrence High School, 1901 Louisiana St., Lawrence, KS, 66046-2999).

Cedar Bluff Reservoir. 38° 47'N, 99° 46'W. Center of the reservoir, 2 mi W of the dam. Habitat coverage: riparian woodland 30%, coniferous stands 30%, cultivated fields 20%, oldfields and fencerows 10%, grassland 9%, lakes and rivers 1%. 6 January 1991. 8 a.m. to 4:30 p.m., 14° to 20° F; Wind NE, 10 m.p.h., waters frozen, snow cover 0-2", cloudy with snow flurries. Five observers in 2 parties. Total party-hours 17 (4 on foot, 13 by car). Total party-miles 234 (4 on foot, 230 by car).

Canada Goose 117, Mallard 60, Northern Pintail 1, Bald Eagle 3, Northern Harrier 55, Sharp-shinned Hawk 2, Cooper's Hawk 2, Red-tailed Hawk 50; Ferruginous Hawk 3, Rough-legged Hawk 28, Golden Eagle 6, American Kestrel 8, Merlin 1, Prairie Falcon 1, Ring-necked Pheasant 4, Rock Dove 19, Barn Owl 2 (excellent details — Ed.), Eastern Screech-owl 7, Great Horned Owl 4, Long-eared Owl 116 (wow! — Ed.), Short-eared Owl 23, Red-bellied Woodpecker 1, Downy Woodpecker 6, Hairy Woodpecker 3, Northern (Yellow-shafted) Flicker 4, Northern (Red-shafted) Flicker 16, Northern Flicker ssp. 25, Horned Lark 6170, Black-billed Magpie 27, American Crow 23, Black-capped Chickadee 23, White-breasted Nuthatch 1, Golden-crowned Kinglet 2, Mountain Bluebird 4, Townsend's Solitaire 5, American Robin 165, Northern Shrike 3, European Starling 565, Northern Cardinal 1, American Tree Sparrow 1101, Song Sparrow 8, White-crowned Sparrow 3, Harris' Sparrow 69, Dark-eyed (Slate-colored) Junco 11, Dark-eyed (Oregon) Junco 65, Dark-eyed (White-winged) Junco 2, Dark-eyed Junco ssp. 99, Lapland Longspur 140, Red-winged Blackbird 145, Western Meadowlark 60, Brown-headed Cowbird 2, American Goldfinch 77, House Sparrow 332. Total 48 species (3 additional subspecies), about 9,670 individuals.

Mike Rader, Diane Seltman, Scott Seltman (compiler — RRI, Box 36, Nekoma, KS 67559), Sara Shane, Tom Shane.

Cimarron National Grassland. 37° 07'N, 101° 52'W. Center 7 mi N, 2 mi E of Elkhart, KS. Habitat coverage: riparian woodland 40%, grasslands 20%, residential areas 20%, rocky slopes 10%, cultivated areas 5%, lakes and rivers 5%. 30 December 1990. 7 a.m. to 5 p.m., 0° to 20° F; Wind SW, 5 m.p.h.; snow cover 2", all waters frozen; clear. Nine observers in 4 parties. Total party-hours 33 (9.5 on foot, 23.5 by car). Total party-miles 239 (10 on foot, 229 by car).

Bald Eagle 1, Northern Harrier 35, Sharp-shinned Hawk 6, Cooper's Hawk 2, *Accipiter* sp. 1, Red-tailed Hawk 21, Ferruginous Hawk 17, Rough-legged Hawk 13, *Buteo* sp. 1, Golden Eagle 6, American Kestrel 6, Merlin 2, Prairie Falcon 3, Ring-necked Pheasant 39, Lesser Prairie-chicken 5, Wild Turkey 1, Northern Bobwhite 65, Scaled Quail 52, Rock Dove 14, Eastern Screech-owl 2, Great Horned Owl 13, Long-eared Owl 3, Short-eared Owl 3, Ladder-backed Woodpecker 3, Downy Woodpecker 18, Hairy Woodpecker 1, Northern Flicker ssp. 20, Horned Lark 15,000, Blue Jay 4, Black-billed Magpie 70, American Crow 2, White-breasted Nuthatch 2, Townsend's Solitaire 1, American Robin 1, Northern Mockingbird 1, Curve-billed Thrasher 1, Cedar Waxwing 45, Loggerhead Shrike 8, European Starling 314, American Tree Sparrow 1025, Vesper Sparrow 1, Lark Bunting 5, Song Sparrow 39, White-crowned Sparrow 734, Harris' Sparrow 1, Dark-eyed (Slate-colored) Junco 54, Dark-eyed (Oregon) Junco 10, Dark-eyed Junco ssp. 402, McCown's Longspur 26, Lapland Longspur 3657, Red-winged Blackbird 115, Western Meadowlark 1082, Great-tailed Grackle 1, Common Grackle 1, House Finch 245, Pine Siskin 1, American Goldfinch 23, House Sparrow 2256. Total 54 species (1 additional subspecies), about 25,480 individuals.

G. Friesen, E. McHugh, S. Patti (compiler — 552 W. Belden, Chicago, IL 60614), G. Pittman, M. Rader, L., La., and R. Smith, P. Wedge.

Dodge City. 37° 46'N, 99° 58'W. Center Saint Mary of the Plains College. Habitat coverage: oldfields and fencerows 40%, cultivated fields 20%, grasslands 17%, residential areas 15%, riparian woodland 5%, lakes and rivers 3%. 15 December 1990, 7:45 a.m. to 4:30 p.m., 27° to 46° F; Wind N, 5-10 m.p.h. Thirteen observers in 4 parties and 10 observers at feeders. Total party-hours 26 (1 on foot, 25 by car) plus 42 hrs at feeders. Total party-miles 174 (1 on foot, 173 by car).

Canada Goose 1, Mallard 47, Bald Eagle 3, Northern Harrier 28, Sharp-shinned Hawk 3, Northern Goshawk 1 (no details — Ed.), Red-tailed Hawk 7, Ferruginous Hawk 5, Rough-legged Hawk 5, American Kestrel 10, Ring-necked Pheasant 6, Rock Dove 122, Great Horned Owl 1, Downy Woodpecker 7, Northern (Yellow-shafted) Flicker 11, Northern (Red-shafted) Flicker 12, Horned Lark 793, Blue Jay 10, Black-billed Magpie 39, American Crow 126, Black-capped Chickadee 1, Red-breasted Nuthatch 2, Townsend's Solitaire 1, American Robin 10, Northern Mockingbird 3, Cedar Waxwing 75, European Starling 635, Northern Cardinal 12, American Tree Sparrow 25, White-throated Sparrow 2, Harris' Sparrow 64, Dark-eyed (Slate-colored) Junco 105, Dark-eyed (Oregon) Junco 24, Western Meadowlark 258, Common Grackle 135, Brown-headed Cowbird 15, House Finch 133, Common Redpoll 3, Pine Siskin 10, American Goldfinch 44, House Sparrow 1046. Total 39 species (2 additional subspecies), about 3,840 individuals.

Marg Andrews, Betty Friesen, Kenneth Friesen, Joleen Fromm (compiler — 2402 5th Ave., Dodge City, KS 67801), Bob Graves, Lillie Graves, Opal Harris, Ethel Heichen, Ramon House, Lois Hunter, Jean Kirkpatrick, Jean Koelling, Nancy Klinge, Lorene Kulbiski, Austin McKee, Marie McKee, Penny Murphy, Kent Ross, Shirley Rumsey, Ora Mae Schraeder, Kay Lynn Smith, Sr. Patricia Stanley, Skip Stark, Shirley Vieux.

El Dorado Lake. 37° 51'N, 96° 52'W. Center near center of lower lake, 1 mi NE of dam center. Habitat coverage: oldfields and fencerows 26%, lakes and rivers 24%, grasslands 22%, riparian forest 15%, cultivated fields 5%, residential areas 4%, marshes 2%, coniferous stands 2%. 28 December 1990, 8 a.m. to 5 p.m., 25° to 45° F; Wind SW, 15-30 m.p.h.; lake 75% frozen, streams mostly frozen; overcast; rain in P.M. Twelve observers in 3 parties. Total party-hours 24.5 (4.5 on foot, 20 by car). Total party-miles 317 (5 on foot, 312 by car).

Great Blue Heron 7, Snow Goose (white morph) 3, Snow Goose (blue morph) 2, Canada Goose 3655, Mallard 4726, Northern Pintail 1, Common Goldeneye 104, Hooded Merganser 38, Common Merganser 4000, Bald Eagle 23, Northern Harrier 23, Cooper's Hawk 1, Red-tailed Hawk 45, Red-tailed (Harlan's) Hawk 2, Ferruginous Hawk 2, Rough-legged Hawk 11, American Kestrel 25, Ring-necked Pheasant 9, North-

ern Bobwhite 125, Ring-billed Gull 124, Herring Gull 26, Glaucous Gull 1 (excellent details — Ed.), Rock Dove 19, Great Horned Owl 1, Belted Kingfisher 2, Red-bellied Woodpecker 4, Downy Woodpecker 13, Hairy Woodpecker 4, Northern (Yellow-shafted) Flicker 6, Northern (Red-shafted) Flicker 1, Northern Flicker ssp. 3, Horned Lark 279, Blue Jay 5, American Crow 117, Black-capped Chickadee 54, Tufted Titmouse 9, White-breasted Nuthatch 3, Brown Creeper 1, Carolina Wren 2, Bewick's Wren 1, Eastern Bluebird 6, American Robin 31, Northern Mockingbird 1, Loggerhead Shrike 7, European Starling 530, Northern Cardinal 73, Rufous-sided Towhee 1, American Tree Sparrow 1531, Song Sparrow 35, Swamp Sparrow 1, Harris' Sparrow 244, Dark-eyed (Slate-colored) Junco 372, Lapland Longspur 20, Red-winged Blackbird 330, *Sturnella* sp. 100, Common Grackle 7, Brown-headed Cowbird 51, American Goldfinch 58, House Sparrow 137. Total 55 species (2 additional subspecies), about 17,012 individuals.

Tim Connell, Beverly DuGay, Rick Goodrick, Pete Janzen (compiler — 3137 Mascot, Wichita, KS 67204), Dan Kilby, Mike Lesan, Jean Roark, Miriam Roark, Jerrod Soukup, Don Vannoy, Jim Wilson.

Emporia. 38° 27'N, 96° 05'W. Center 1 mi S Lang, KS. Habitat coverage: riparian forest 55%, grassland 20%, lakes and rivers 10%, residential areas 8%, cultivated fields 5%, coniferous stands 1%, marsh 1%. 16 December 1990. 7 a.m. to 5 p.m., 27° to 42° F; Wind NE - SW, 3-5 m.p.h.; still water partly open, moving water completely open; overcast with light rain. Twenty-six observers in 9 parties and 1 observer at feeders. Total party-hours 68.5 (28 on foot, 40.5 by car) plus 1 hr owling and 4 hrs at feeder. Total party-miles 737 (34 on foot, 703 by car) and 1 mile owling.

Pied-billed Grebe 8, Double-crested Cormorant 32, Great Blue Heron 11, Snow Goose (white morph) 2, Canada Goose 642, Green-winged Teal 45, Mallard 701, Northern Pintail 1, American Wigeon 3, Canvasback 1, Redhead 47, Ring-necked Duck 45, Lesser Scaup 25, Common Goldeneye 92, Bufflehead 1, Common Merganser 6, Northern Harrier 77, Sharp-shinned Hawk 4, Cooper's Hawk 1, Red-tailed Hawk 139, Red-tailed (Harlan's) Hawk 3, Rough-legged Hawk 7, American Kestrel 35, Merlin 3, Prairie Falcon 3, Northern Bobwhite 78, Killdeer 5, Ring-billed Gull 512, Rock Dove 233, Mourning Dove 56, Barn Owl 1 (excellent details — Ed.), Eastern Screech-owl 10, Great Horned Owl 10, Barred Owl 8, Long-eared Owl 1, Short-eared Owl 1, Belted Kingfisher 4, Red-headed Woodpecker 2, Red-bellied Woodpecker 62, Yellow-bellied Sapsucker 1, Downy Woodpecker 40, Hairy Woodpecker 8, Northern (Yellow-shafted) Flicker 63, Northern (Red-shafted) Flicker 6, Pileated Woodpecker 1, Horned Lark 139, Blue Jay 75, American Crow 2893, Black-capped Chickadee 339, Tufted Titmouse 50, White-breasted Nuthatch 29, Brown Creeper 6, Carolina Wren 7, Bewick's Wren 2, Winter Wren 1, Golden-crowned Kinglet 26, Ruby-crowned Kinglet 4, Eastern Bluebird 5, Townsend's Solitaire 1, American Robin 54, Northern Mockingbird 4, Loggerhead Shrike 12, European Starling 4058, Northern Cardinal 774, American Tree Sparrow 848, Field Sparrow 7, Song Sparrow 37, White-throated Sparrow 21, White-crowned Sparrow 6, Harris' Sparrow 392, Dark-eyed (Slate-colored) Junco 438, Dark-eyed (Oregon) Junco 2, Lapland Longspur 215, Smith's Longspur 3, Red-winged Blackbird 2286, Eastern Meadowlark 391, *Sturnella* sp. 98, Rusty Blackbird 20, Brewer's Blackbird 71, Common Grackle 19, Brown-headed Cowbird 778, House Finch 12, American Goldfinch 238, House Sparrow 572. Total 80 species (3 additional subspecies), about 17,969 individuals.

Barbara Anderson, Laura Dodge, Roger and Sherry Ferguson, Lloyd Fox, Elmer and LaVonne Finck, Hugh and Thelma Hanson, Mary Headrick, Jerry Horak, Brandon, Brian, and Marvin Kuehn, Greg Lackey, Jim and Tanner Mayhew, Paul McKnab, Dwight Moore, Jean Schulenberg (compiler — Rt. 2, Box 36, Admire, KS, 66830), Marvin Schwillig, Bernard Sitzman, Dena and Kathleen Tabor, Martha Wickleshaus, Chad Wittenberger.

Garden City. 37° 55'N, 100° 47'W. Center 4 mi SE junction U.S. 83 spur and U.S. 50. Habitat coverage: residential areas and feedlots 34%, riparian woodland 28%, old-

fields and fencerows 14%, cultivated fields 11%, grasslands 9%, sandpits and ponds 4%. 15 December 1990. 7:45 a.m. to 5:30 p.m., 24° to 47° F; Wind calm. Partly cloudy to clear; all water open. Seventeen observers in 6 parties and 6 observers at feeders. Total party-hours 37.5 (6 on foot, 31.5 by car) and 6 hrs at feeders. Total party-miles 262 (9 on foot, 253 by car).

Great Blue Heron 2, Wood Duck 12, Green-winged Teal 544, Mallard 947, Northern Pintail 22, American Wigeon 78, Bald Eagle 11, Northern Harrier 40, Red-tailed Hawk 27, Ferruginous Hawk 15, Rough-legged Hawk 8, *Buteo* sp. 9, American Kestrel 14, Prairie Falcon 3, Ring-necked Pheasant 65, Lesser Prairie-chicken 1, Northern Bobwhite 273, Scaled Quail 128, Killdeer 3, Rock Dove 173, Mourning Dove 6, Great Horned Owl 11, Red-bellied Woodpecker 2, Downy Woodpecker 10, Hairy Woodpecker 3, Northern (Yellow-shafted) Flicker 2, Northern (Red-shafted) Flicker 27, Northern Flicker ssp. 29, Horned Lark 255, Blue Jay 13, Black-billed Magpie 215, American Crow 111, Black-capped Chickadee 1, White-breasted Nuthatch 1, Brown Creeper 2, Golden-crowned Kinglet 1, Ruby-crowned Kinglet 1, Townsend's Solitaire 3, American Robin 71, Northern Mockingbird 4, Cedar Waxwing 46, Northern Shrike 1, Loggerhead Shrike 2, European Starling 1758, Northern Cardinal 2, Rufous-sided Towhee 2, American Tree Sparrow 354, Song Sparrow 1, White-throated Sparrow 4, White-crowned Sparrow 558, Harris' Sparrow 110, Dark-eyed (Slate-colored) Junco 5, Dark-eyed (Oregon) Junco 42, Dark-eyed (White-winged) Junco 1, Dark-eyed Junco ssp. 191, Lapland Longspur 1, Red-winged Blackbird 450, Western Meadowlark 373, Great-tailed Grackle 121, Common Grackle 192, Brown-headed Cowbird 16, Purple Finch 3, House Finch 817, Common Redpoll 1, Pine Siskin 60, American Goldfinch 26, House Sparrow 2583. Total 61 species (3 additional subspecies), about 10,863 individuals. Seen in area during count period, but not on count day — Sharp-shinned Hawk, Eastern Bluebird.

Dan Baffa, Barbara Campbell, Elaine Childers, Robbie Dockett, Cathy Fenton, Ron Jameson, Bill Miles, Art Nonhof, Kathy Olsen, Libby Olsen, Pete Olsen, Marie Osterbuhr (compiler — 1103 Gillespie Pl., Garden City, KS 67846), Betty Rich, Leonard Rich, Emaline Scott, Kathy Sexson, Mark Sexson, Sara Shane, Tom Shane.

Halstead-Newton. 38° 04'N, 97° 28'W. Center 5.75 mi NE Halstead, KS. Habitat coverage: riparian forest 28%, cultivated fields 20%, grassland 18%, oldfields and fencerows 12%, residential areas 12%, upland deciduous forest 7%, lakes, rivers, and streams 5%. 15 December 1990, 7 a.m. to 5:30 p.m., 28° to 46° F; Wind N, 0-16 m.p.h.; water mostly open; clear. Twenty-four observers in 6 parties and 1 observer at feeders. Total party-hours 51 (27 on foot, 24 by car) plus 8 hrs at feeders. Total party-miles 294 (27 on foot, 267 by car).

Great Blue Heron 6, Northern Harrier 4, Sharp-shinned Hawk 4, Cooper's Hawk 1, *Accipiter* sp. 1, Red-tailed Hawk 71, Red-tailed (Harlan's) Hawk 1, Rough-legged Hawk 3, *Buteo* sp. 3, Golden Eagle 2, American Kestrel 34, Prairie Falcon 2, Ring-necked Pheasant 36, Wild Turkey 29, Northern Bobwhite 109, Killdeer 2, Common Snipe 9, Ring-billed Gull 249, Rock Dove 42, Mourning Dove 136, Great Horned Owl 10, Belted Kingfisher 5, Red-headed Woodpecker 1, Red-bellied Woodpecker 25, Yellow-bellied Sapsucker 1, Downy Woodpecker 47, Hairy Woodpecker 4, Northern (Yellow-shafted) Flicker 48, Northern (Red-shafted) Flicker 10, Northern Flicker ssp. 18, Horned Lark 826, Blue Jay 83, American Crow 891, Black-capped Chickadee 224, Tufted Titmouse 12, Red-breasted Nuthatch 1, White-breasted Nuthatch 17, Brown Creeper 2, Carolina Wren 4, Winter Wren 1, Golden-crowned Kinglet 9, Eastern Bluebird 37, Townsend's Solitaire 2, American Robin 458, Northern Mockingbird 2, Cedar Waxwing 21, Loggerhead Shrike 9, European Starling 22,311, Northern Cardinal 138, Rufous-sided Towhee 3, American Tree Sparrow 534, Field Sparrow 4, Song Sparrow 37, White-crowned Sparrow 2, Harris' Sparrow 979, Dark-eyed (Slate-colored) Junco 324, Red-winged Blackbird 1290, Eastern Meadowlark 4, Western Meadowlark 7, *Sturnella* sp. 555, Brewer's Blackbird 10, Common Grackle 13, Brown-headed Cowbird 255, Purple Finch 1, House Finch 90, American Goldfinch 102, House Sparrow 1214. Total 61 species (2 additional subspecies), about 31,385 individuals. Seen in area during count

period, but not on count day — Black-billed Magpie.

Nadine Abrahams, Bud Akin, Marion Deckert, Bob Dester, Gregg Friesen, Lorna Harder, Paul Jantzen, Pete Janzen, Marilyn Johnson, Shari Johnson, Jay Newton, Wesley Pauls, Hans Penner, Joan Phelan, Dwight Platt (compiler — 702 NE 24th St., Newton, KS 67114), Bob Regier, Carolyn Schwab, Jerrod Soukup, Joe Soukup, John Torline, Paul Unrau, Nada Voth, Wilma Voth, Joe Yoder.

Junction City. 39° 00'N, 96° 53'W. Center 170 roadside rest W of Junction City, KS. Habitat coverage: coniferous stands 19%, riparian forest 18%, oldfields and fencerows 16%, grasslands 13%, cultivated fields 11%, lakes and rivers 11%, marsh 5%, upland deciduous forest 5%, residential areas 2%. 6 January 1991, 2 a.m. to 7 p.m., 2° to 21° F; Wind NE. 5-10 m.p.h.; waters 1% open; clear. Twenty-one observers in 8 parties and 1 observer at feeders. Total party-hours 53 (25 on foot, 28 by car) plus 4 hrs owling and 1 hr at feeders. Total party-miles 334 (26 on foot, 308 by car) and 70 miles owling.

American White Pelican 1, Great Blue Heron 38, Snow Goose (white morph) 30, Canada Goose 892, Green-winged Teal 52, Mallard 3754, Northern Pintail 2, Gadwall 39, American Wigeon 9, Redhead 4, Common Goldeneye 69, Bufflehead 13, Hooded Merganser 6, Common Merganser 36, Bald Eagle 35, Northern Harrier 17, Sharp-shinned Hawk 7, Red-tailed Hawk 96, Red-tailed (Harlan's) Hawk 3, Ferruginous Hawk 1 (excellent details — Ed.), Rough-legged Hawk 4, Golden Eagle 1, American Kestrel 17, Merlin 1, Ring-necked Pheasant 3, Greater Prairie-chicken 1, Wild Turkey 31, Northern Bobwhite 289, Killdeer 1, Common Snipe 2, Rock Dove 99, Mourning Dove 18, Eastern Screech-owl 5, Great Horned Owl 12, Barred Owl 5, Long-eared Owl 5, Belted Kingfisher 2, Red-headed Woodpecker 2, Red-bellied Woodpecker 54, Yellow-bellied Sapsucker 3, Downy Woodpecker 61, Hairy Woodpecker 2, Northern (Yellow-shafted) Flicker 59, Northern (Red-shafted) Flicker 1, Northern Flicker ssp. 34, Horned Lark 748, Blue Jay 151, American Crow 662, Black-capped Chickadee 263, Tufted Titmouse 21, Red-breasted Nuthatch 6, White-breasted Nuthatch 35, Brown Creeper 3, Carolina Wren 10, Bewick's Wren 4, Winter Wren 9, Golden-crowned Kinglet 8, Eastern Bluebird 41, American Robin 3212, Northern Mockingbird 1, Cedar Waxwing 34, Loggerhead Shrike 3, European Starling 7245, Yellow-rumped (Myrtle) Warbler 37, Northern Cardinal 246, Rufous-sided Towhee 7, American Tree Sparrow 1376, Fox Sparrow 3, Song Sparrow 45, Swamp Sparrow 1, White-throated Sparrow 1, White-crowned Sparrow 23, Harris' Sparrow 249, Dark-eyed (Slate-colored) Junco 770, Dark-eyed (Oregon) Junco 6, Lapland Longspur 143, Red-winged Blackbird 4, Eastern Meadowlark 45, Western Meadowlark 50, *Sturnella* sp. 202, Brewer's Blackbird 22, Common Grackle 1, Purple Finch 3, House Finch 70, Red Crossbill 5, American Goldfinch 321, House Sparrow 463. Total 82 species (3 additional subspecies), about 22,365 individuals. Seen in area during count period, but not on count day — Pied-billed Grebe, Double-crested Cormorant, Greater White-fronted Goose, American Black Duck, American Coot, Northern Saw-whet Owl (good details — Ed.), Marsh Wren, Townsend's Solitaire, Brown Thrasher, Northern Shrike, Yellow-rumped (Audubon's) Warbler (excellent details — Ed.), Field Sparrow.

Doris and Willy Burnett, Charlene Casper, Scott Coleman, Stacey Cooke, Kyle Donnelly, Kevin Fay, Marion Gray, Chod Hedinger, Cindy and Gary Jeffrey, Jeff Keating, Dan and Robert LaShelle (compiler — 1202 W. 6th Fl., Junction City, KS 66441), Mary Liz Montgomery, Chuck Otte, Dave Rintoul, Ryan Robinson, Chris Smith, Bob and Steven Waters, John Zimmerman.

Kirwin. 99° 08'N, 39° 42'W. Center 1 mi N Kirwin, KS. Habitat coverage: lakes and rivers 60%, cultivated fields 30%, riparian woodland 8%, fencerows and shelterbelts 2%. 19 December 1990. 6:45 a.m. to 4:30 p.m., 0° to 15° F; Wind N, 20-35 m.p.h.; overcast, snow in P.M., waters open. Three observers in 3 parties. Total party-hours 11.5 (1 on foot, 10.5 by car). Total party-miles 159 (1 on foot, 158 by car).

American White Pelican 5, Double-crested Cormorant 3, Greater White-fronted Goose 600, Snow Goose (white morph) 175, Snow Goose (blue morph) 10, Ross' Goose 23 (ex-

cellent details — Ed.), Canada Goose 41,000, Green-winged Teal 1, Mallard 7000, American Wigeon 10, Common Goldeneye 1000, Hooded Merganser 2, Common Merganser 8500, Bald Eagle 7, Northern Harrier 46, Cooper's Hawk 1, Red-tailed Hawk 34, Rough-legged Hawk 6, American Kestrel 8, Prairie Falcon 1, Ring-necked Pheasant 7, Northern Bobwhite 6, Ring-billed Gull 250, Herring Gull 4, Rock Dove 39, Mourning Dove 1, Eastern Screech-owl 3, Great Horned Owl 2, Red-bellied Woodpecker 2, Downy Woodpecker 15, Northern (Yellow-shafted) Flicker 4, Northern Flicker ssp. 14, Horned Lark 3723, Black-billed Magpie 36, American Crow 192, Black-capped Chickadee 51, White-breasted Nuthatch 1, Brown Creeper 3, Golden-crowned Kinglet 2, American Robin 1, European Starling 360, Northern Cardinal 16, American Tree Sparrow 1650, Savannah Sparrow 1 (excellent details — Ed.), Song Sparrow 1, Harris' Sparrow 240, Dark-eyed (Slate-colored) Junco 370, Dark-eyed (Oregon) Junco 1, Lapland Longspur 12,380, Red-winged Blackbird 555, Western Meadowlark 15, *Sturnella* sp. 220, Yellow-headed Blackbird 1 (excellent details — Ed.), Common Grackle 7, Brown-headed Cowbird 50, House Finch 1, American Goldfinch 2, House Sparrow 570. Total 54 species (2 additional subspecies), about 79,228 individuals. Seen in area during count period, but not on count day — Northern Pintail.

Chad Karges, Mike Rader (compiler — Box 395, Wilson, KS 67490), Scott Seltman.

Lawrence. 39° 00'N, 95° 18'W. Center 1.5 mi N and 2.7 mi W of junction U.S. 40 and U.S. 59 in NW Lawrence, KS. Habitat coverage: residential areas 17%, oldfields and fencerows 17%, lakes and rivers 16%, upland deciduous forest 12%, cultivated fields 12%, riparian forest 10%, grasslands 8%, coniferous stands 6%, marsh 2%. 15 December 1990. 5:45 a.m. to 6 p.m., 32° to 42° F; Wind NW, 10-25 m.p.h.; waters open, overcast in A.M., partly cloudy P.M. Forty observers in 16 parties and 2 observers at feeders. Total party-hours 120.5 (41.5 on foot, 79 by car) plus 12 hrs owling and 5 hrs at feeders. Total party-miles 633 (40 on foot, 593 by car) and 77 miles owling.

Pacific Loon 1 (very good details — Ed.), Common Loon 2, Eared Grebe 5, American White Pelican 7, Double-crested Cormorant 152, Great Blue Heron 25, Greater White-fronted Goose 1, Snow Goose (white morph) 3, Canada Goose 245, Wood Duck 2, Green-winged Teal 66, Mallard 925, Northern Pintail 4, Gadwall 38, American Wigeon 3, Redhead 2, Lesser Scaup 20, Old Squaw 4, Common Goldeneye 157, Bufflehead 12, Hooded Merganser 3, Common Merganser 337, Bald Eagle 29, Northern Harrier 31, Sharp-shinned Hawk 3, Red-tailed Hawk 146, Rough-legged Hawk 2, American Kestrel 61, Prairie Falcon 2, Wild Turkey 4, Northern Bobwhite 82, American Coot 18, Killdeer 4, Common Snipe 1, Bonaparte's Gull 256 (excellent details — Ed.), Ring-billed Gull 1850, Herring Gull 60, Thayer's Gull 1 (excellent details — Ed.), Glaucous Gull 3 (excellent details — Ed.), Rock Dove 1135, Mourning Dove 179, Eastern Screech-owl 13, Great Horned Owl 8, Barred Owl 3, Belted Kingfisher 3, Red-headed Woodpecker 62, Red-bellied Woodpecker 126, Yellow-bellied Sapsucker 2, Downy Woodpecker 150, Hairy Woodpecker 22, Northern (Yellow-shafted) Flicker 103, Northern (Red-shafted) Flicker 5, Northern Flicker ssp. 80, Horned Lark 24, Blue Jay 230, American Crow 548, Black-capped Chickadee 400, Tufted Titmouse 137, White-breasted Nuthatch 71, Brown Creeper 18, Carolina Wren 34, Sedge Wren 1 (excellent details — Ed.), Golden-crowned Kinglet 42, Ruby-crowned Kinglet 1, Eastern Bluebird 185, American Robin 726, Northern Mockingbird 10, Cedar Waxwing 202, Loggerhead Shrike 14, European Starling 9000, Yellow-rumped (Myrtle) Warbler 6, Northern Cardinal 600, Rufous-sided Towhee 6, American Tree Sparrow 421, Fox Sparrow 1, Song Sparrow 128, Lincoln's Sparrow 2, Swamp Sparrow 22, White-throated Sparrow 11, Harris' Sparrow 131, Dark-eyed (Slate-colored) Junco 534, Dark-eyed (Oregon) Junco 7, Dark-eyed Junco ssp. 488, Red-winged Blackbird 625, Eastern Meadowlark 61, Western Meadowlark 11, *Sturnella* sp. 365, Rusty Blackbird 59, Common Grackle 2, Brown-headed Cowbird 101, Purple Finch 25, House Finch 50, American Goldfinch 450, House Sparrow 1000. Total 89 species (2 additional subspecies), about 23,207 individuals. Seen in area during count period, but not on count day — Cooper's Hawk, Field Sparrow.

Mary Allen, Bob Antonio, Robert Bearse, Roger Boyd, David Bryan, Bill Busby, Paul

Calovich, Calvin Cink, Jan Conrad, Steve Crawford, Chris Erb, Ruth Fauhl, Lin Fredericksen, Nancy Golden, Sharlyne Hasvold, David Herrin, Buzz Hoagland, Chris Hobbs, Jonathan Jaffin, Judee Johnsen, Jennifer Jones, Kelly Kindscher, Mick McHugh, Lloyd Moore, Ted Mouras, Galen Pittman (compiler — RR4, Box 260, Lawrence, KS 66044), Stan Roth, Bob Rucker, Richard Rucker, John Schukman, David Seibel, Dawn Sharp, Cynthia Shaw, Ed Shaw, Roseanne Smith, Julie Waters, Margaret Wedge, Phil Wedge, Joyce Wolf, Ron Wolf.

Leavenworth-Atchison. 39° 24'N, 94° 58'W. Center SW corner, sec. 31, T7S, R22E (note change from previous year). Habitat coverage: riparian forest 28%, upland deciduous forest 20%, lakes and rivers 20%, cultivated fields 13%, oldfields and fencerows 10%, grasslands 3%, coniferous stands 3%, residential areas 3%. 28 December 1990. 6 a.m. to 5:30 p.m., 10° to 30° F; Wind S, 10-20 m.p.h.; ponds and lakes frozen, ice flows in Missouri River; clear in A.M., partly cloudy in P.M. Four observers in 3 parties and 3 observers at feeders. Total party-hours 15.5 (1 on foot, 14.5 by car) plus 1.5 hrs owling and 0.5 hrs at feeder. Total party-miles 98 (1 on foot, 97 by car) and 5.5 miles owling.

American White Pelican 2, Snow Goose (white morph) 50,000, Canada Goose 24, Mallard 27, Common Goldeneye 28, Bald Eagle 45, Northern Harrier 2, Sharp-shinned Hawk 2, Red-tailed Hawk 40, *Buteo* sp. 1, American Kestrel 7, *Falco* sp. 1, Ring-necked Pheasant 4, Northern Bobwhite 8, Rock Dove 30, Mourning Dove 23, Eastern Screech-owl 1, Great Horned Owl 2, Barred Owl 2, Belted Kingfisher 1, Red-headed Woodpecker 6, Red-bellied Woodpecker 15, Downy Woodpecker 18, Hairy Woodpecker 3, Northern (Yellow-shafted) Flicker 33, Northern Flicker ssp. 7, Horned Lark 4, Blue Jay 66, American Crow 32, Black-capped Chickadee 82, Tufted Titmouse 20, White-breasted Nuthatch 31, Carolina Wren 2, Winter Wren 1, Golden-crowned Kinglet 12, Northern Mockingbird 2, Loggerhead Shrike 3, European Starling 1227, Northern Cardinal 98, American Tree Sparrow 50, Song Sparrow 17, Harris' Sparrow 24, Dark-eyed (Slate-colored) Junco 64, Dark-eyed (Oregon) Junco 6, Dark-eyed Junco ssp. 160, Red-winged Blackbird 25,750, Western Meadowlark 1, *Sturnella* sp. 22, Rusty Blackbird 10, Common Grackle 212, Brown-headed Cowbird 223, Purple Finch 6, American Goldfinch 52, House Sparrow 86. Total 48 species (1 additional subspecies), about 78,595 individuals. Seen in area during count period, but not on count day — Brown Creeper.

Chuck Allen, Galen Pittman, John Schukman (compiler — Rt. 2, Box 111-37, Leavenworth, KS 66048), Pat Wakeman.

Liberal. 37° 08'N, 100° 50'W. Center 7.5 mi NE LBL airport. Habitat coverage: riparian woodland 30%, cultivated fields 20%, residential areas 20%, lakes and rivers 10%, grasslands 10%, oldfields and fencerows 10%. 29 December 1990. 8 a.m. to 5 p.m., -4° to 0° F; Wind calm, 2" snow cover, all water frozen; clear. Six observers in 2 parties. Total party-hours 15 (2 on foot, 13 by car). Total party-miles 90 (2 on foot, 88 by car).

Canada Goose 57, Green-winged Teal 21, Mallard 1203, Northern Pintail 2, Gadwall 3, Bald Eagle 9, Northern Harrier 43, Sharp-shinned Hawk 1, Red-tailed Hawk 10, Ferruginous Hawk 11, Rough-legged Hawk 7, American Kestrel 3, Merlin 1, Prairie Falcon 5, Ring-necked Pheasant 18, Northern Bobwhite 115, Common Snipe 1, Rock Dove 60, Mourning Dove 7, Great Horned Owl 2, Downy Woodpecker 5, Hairy Woodpecker 1, Northern (Yellow-shafted) Flicker 1, Northern (Red-shafted) Flicker 6, Northern Flicker ssp. 6, Horned Lark 15,050, Blue Jay 6, Black-billed Magpie 5, American Crow 10, Red-breasted Nuthatch 1, Townsend's Solitaire 1, American Robin 51, Cedar Waxwing 6, European Starling 3850, Rufous-sided Towhee 1, American Tree Sparrow 146, Song Sparrow 2, White-throated Sparrow 1, White-crowned Sparrow 72, Harris' Sparrow 108, Dark-eyed (Slate-colored) Junco 14, Dark-eyed (Oregon) Junco 10, Dark-eyed Junco ssp. 133, Chestnut-collared Longspur 5, Lapland Longspur 47,001, Smith's Longspur 1 (excellent details — Ed.), Red-winged Blackbird 6900, Western Meadowlark 246, Brewer's Blackbird 43, Great-tailed Grackle 628, Common Grackle 2, Brown-headed Cowbird 2, House Finch 414, American Goldfinch 2, Evening Grosbeak 3, House

Sparrow 1581. Total 52 species (2 additional subspecies), about 77,893 individuals. Seen in area during count period, but not on count day — Carolina Chickadee, Marsh Wren.

G. Friesen, E. McHugh, S. Patti (compiler — 552 W. Belden, Chicago, IL 60614), G. Pittman, M. Rader, P. Wedge.

Linn County. 38° 17'N, 94° 45'W. Center SW corner, Unit G, Marais des Cygnes Wildlife Management Area. Habitat coverage: cultivated fields 20%, oldfields and fencerows 20%, lakes and rivers 15%, upland deciduous forest 14%, riparian forest 14%, grasslands 6%, marsh 6%, coniferous stands 3%, residential areas 2%. 22 December 1990, 4 a.m. to 5 p.m., 4° F to 14° F; Wind NW, 10-15 m.p.h.; waters mostly frozen and fog over open lakes; overcast, 1" snow cover. Fourteen observers in 6 parties. Total party-hours 47 (5.5 on foot, 41.5 by car) plus 3.5 hrs owling. Total party-miles 430.5 (8.5 on foot, 422 by car) and 32 miles owling.

Pied-billed Grebe 1, Double-crested Cormorant 2, Great Blue Heron 3, Snow Goose (white morph) 1713, Snow Goose (blue morph) 489, Canada Goose 6922 (incl. 100 small), Green-winged Teal 3, Mallard 492, Northern Pintail 1, Northern Shoveler 2, Gadwall 14, American Wigeon 1, Canvasback 2, Ring-necked Duck 71, Lesser Scaup 15, Common Goldeneye 37, Bufflehead 2, Hooded Merganser 16, Common Merganser 180, Bald Eagle 25, Northern Harrier 13, Sharp-shinned Hawk 2, Cooper's Hawk 1, Red-tailed Hawk 102, Rough-legged Hawk 7, American Kestrel 17, Prairie Falcon 1, Wild Turkey 56, Northern Bobwhite 67, American Coot 7, Killdeer 13, Greater Yellowlegs 1 (excellent details — Ed.), Common Snipe 1, Bonaparte's Gull 10 (excellent details — Ed.), Ring-billed Gull 101, Herring Gull 9, Rock Dove 68, Mourning Dove 14, Eastern Screech-owl 5, Great Horned Owl 3, Belted Kingfisher 2, Red-headed Woodpecker 53, Red-bellied Woodpecker 70, Yellow-bellied Sapsucker 4, Downy Woodpecker 67, Hairy Woodpecker 7, Northern (Yellow-shafted) Flicker 30, Northern (Red-shafted) Flicker 1, Northern Flicker ssp. 24, Pileated Woodpecker 4, Horned Lark 203, Blue Jay 144, American Crow 335, Black-capped Chickadee 108, Tufted Titmouse 55, White-breasted Nuthatch 24, Brown Creeper 6, Carolina Wren 13, Winter Wren 1, Golden-crowned Kinglet 10, Eastern Bluebird 43, American Robin 45, Northern Mockingbird 6, Cedar Waxwing 10, Loggerhead Shrike 8, European Starling 216, Yellow-rumped (Myrtle) Warbler 1, Northern Cardinal 470, American Tree Sparrow 735, Fox Sparrow 5, Song Sparrow 62, Lincoln's Sparrow 2, Swamp Sparrow 10, White-throated Sparrow 46, White-crowned Sparrow 47, Harris' Sparrow 53, Dark-eyed (Slate-colored) Junco 133, Dark-eyed (Oregon) Junco 12, Dark-eyed Junco ssp. 1007, Lapland Longspur 5, Red-winged Blackbird 1006, Eastern Meadowlark 1, *Sturnella* sp. 312, Rusty Blackbird 66, Great-tailed Grackle 1, Common Grackle 10, Brown-headed Cowbird 14, Purple Finch 8, Pine Siskin 1, American Goldfinch 245, House Sparrow 377. Total 85 species (3 additional subspecies), about 16,607 individuals.

Donald Arney, Roger Boyd (compiler — Biology Dept., Baker Univ., Baldwin City, KS 66006), Mel Cooksey, Elaine and Mark Corder, Dave Fischer, Bob Fisher, Scott and Tony Ikenberry, Lloyd Moore, Galen Pittman, Mike Reynolds, Bob and Richard Rucker.

Manhattan. 39° 11'N, 96° 34'W. Center Anderson Hall, Kansas State University campus. Habitat coverage: riparian forest 24%, lakes and rivers 21%, upland deciduous forest 15%, oldfields and fencerows 12%, grasslands 10%, cultivated fields 7%, coniferous stands 6%, residential areas 3%, marsh 2%. 15 December 1990, 7 a.m. to 5 p.m., 34° to 42° F; Wind W, 0-17 m.p.h., all water open; clear. Ninety-six observers in 19 parties. Total party-hours 185 (73.5 by car, 111.5 on foot) plus 6.5 hrs at feeders. Total party-miles 718.5 (60.4 by car, 114.5 on foot).

Pied-billed Grebe 8, Double-crested Cormorant 3, Great Blue Heron 32, Green-winged Teal 69, Mallard 1056, Gadwall 81, American Wigeon 2, Redhead 54, Ring-necked Duck 7, Lesser Scaup 41, Common Goldeneye 66, Bufflehead 23, Hooded Merganser 2, Common Merganser 584, Bald Eagle 71, Northern Harrier 66, Sharp-shinned Hawk 19, Cooper's Hawk 2, Northern Goshawk 1 (good details — Ed.), Red-tailed Hawk 156, Red-tailed (Harlan's) Hawk 10, Rough-legged Hawk 6, Golden Eagle 1,

American Kestrel 66, Merlin 3, Peregrine Falcon 2, Prairie Falcon 2, Ring-necked Pheasant 53, Greater Prairie-chicken 3, Wild Turkey 16, Northern Bobwhite 660, American Coot 8, Killdeer 1, Common Snipe 2, Bonaparte's Gull 2 (excellent details — Ed.), Ring-billed Gull 1820, Herring Gull 47, Forster's Tern 1 (excellent details — Ed.), Rock Dove 328, Mourning Dove 209, Eastern Screech-owl 2, Great Horned Owl 12, Barred Owl 5, Short-eared Owl 1, Belted Kingfisher 9, Red-headed Woodpecker 174, Red-bellied Woodpecker 177, Yellow-bellied Sapsucker 15, Downy Woodpecker 154, Hairy Woodpecker 20, Northern (Yellow-shafted) Flicker 160, Northern (Red-shafted) Flicker 14, Northern Flicker ssp. 66, Horned Lark 15, Blue Jay 487, American Crow 2314, Black-capped Chickadee 566, Tufted Titmouse 103, Red-breasted Nuthatch 17, White-breasted Nuthatch 102, Brown Creeper 43, Carolina Wren 12, Bewick's Wren 3, Winter Wren 1, Golden-crowned Kinglet 117, Eastern Bluebird 141, Townsend's Solitaire 3, American Robin 102,151, Northern Mockingbird 4, Brown Thrasher 1, Cedar Waxwing 78, Loggerhead Shrike 10, European Starling 25,363, Orange-crowned Warbler 1 (good details — Ed.), Yellow-rumped Warbler 14, Northern Cardinal 444, Rufous-sided Towhee 11, American Tree Sparrow 1060, Field Sparrow 20, Vesper Sparrow 1 (good details — Ed.), Savannah Sparrow 1 (good details — Ed.), Fox Sparrow 2, Song Sparrow 62, Lincoln's Sparrow 8, Swamp Sparrow 3, White-throated Sparrow 9, White-crowned Sparrow 13, Harris' Sparrow 768, Dark-eyed (Slate-colored) Junco 1549, Dark-eyed (Oregon) Junco 22, Red-winged Blackbird 512, Eastern Meadowlark 24, Western Meadowlark 41, *Sturnella* sp. 489, Brewer's Blackbird 1, Great-tailed Grackle 1, Common Grackle 483, Brown-headed Cowbird 5, Purple Finch 18, House Finch 28, Pine Siskin 29, American Goldfinch 444, House Sparrow 812. Total 99 species (3 additional subspecies), about 144,798 individuals. Seen in area during count period, but not on count day — Canada Goose, Pileated Woodpecker (excellent details — Ed.).

Steve and Jane Amy, Ed Bagely, Carla Bishop, Shawn Blanka, Bob Bowden, Brent Brock, Cathy Brown, Melissa Brown, Doris Burnett, Marlies Burns, Frank Carpenter, Ann Carter, Scott Coleman, Bill Coons, Wayne Corn, Brock Dale, Matt Daly, Michael Donnelly, Buddy Gray, Chris Edler, Carolyn Elliott, Don and Irmie Fallon, Adam Farver, Laura Fatemi, Clyde and Marilena Ferguson, Elmer and Lavonne Finck, Mike Finnegan, Angel and Nate Folland, Leanne Harrell, Jennifer Harris, Chod Hedinger, Blake Henning, Jack Holl, Kelly Irwin, Cindy, Gary and Jay Jeffrey, Lowell Johnson, Mark Joy, Rich Kazmaier, Dale Kennedy, Duane Kerr, Ron Klataske, Bray Klostermeyer, Jim Koelliker, Ann Kosch, Sam Lacy, Kenneth Larkins, Charlotte Lorenzen, John Markham, Dave Marquardt, Jim Mayhew, Rene Miner, Barry Mitchie, Dan and Elizabeth Mulhern, Ed Olson, Carol Pacey, Joe Paceý, Thad Pittinger, Ken Powell, Gary Radke, Mark and Skip Raney, Mike Rhodes, Amy, David and Joseph Rintoul, Josh Roberts, Abbie Siddall, Velma Skidmore, Andrea Smith, Chris Smith, Guy Smith, Margy Stewart, Marilyn Tilghman, Dana and Harvard Townsend, Elsie Wilson, Benjamin and Ron Young, Bill Struckmeyer, Mark Swiegle, Lara Ward, Paul Weidhaas, Ellen and Ruth Welti, Doug White, Van Withee, Jan and John Zimmerman (compiler — Div. Biology, Kans. State Univ., Manhattan, KS 66506), (Northern Flint Hills Audubon Society).

Meade County. 37° 15'N, 100° 20'W. Center 1.5 mi S Meade, KS on K23. Habitat coverage: riparian woodland 50%, lakes and rivers 20%, residential areas 15%, cultivated fields 10%, oldfields and fencerows 5%. 29 December 1990. 7:30 a.m. to 4 p.m., -6° to 0° F; Wind N, 20-30 m.p.h.; waters 95% frozen; 80% snow cover, overcast. Six observers in 3 parties and 3 observers at feeders. Total party-hours 15 (1 on foot, 14 by car) and 7 hrs at feeders. Total party-miles 79 (1 on foot, 78 by car).

Canada Goose 1500, Green-winged Teal 5, Mallard 2536, Canvasback 1, Redhead 1, Ring-necked Duck 6, Bald Eagle 1, Northern Harrier 2, Sharp-shinned Hawk 1, Red-tailed Hawk 8, Rough-legged Hawk 3, Golden Eagle 1, American Kestrel 1, Prairie Falcon 1, Ring-necked Pheasant 1, Wild Turkey 9, American Coot 50, Great Horned Owl 1, Red-bellied Woodpecker 3, Downy Woodpecker 2, Northern (Yellow-shafted) Flicker 1, Northern (Red-shafted) Flicker 5, Northern Flicker ssp. 4, Horned Lark 141, Blue Jay 1, American Crow 28, Black-capped Chickadee 4, Golden-crowned Kinglet 12,

European Starling 21, Northern Cardinal 2, American Tree Sparrow 14, Song Sparrow 4, White-crowned Sparrow 3, Harris' Sparrow 16, Dark-eyed Junco ssp. 23, Red-winged Blackbird 778, Western Meadowlark 56, Common Grackle 6, Brown-headed Cowbird 26, House Finch 61, American Goldfinch 55, House Sparrow 271. Total 40 species (1 additional subspecies), about 5,665 individuals. Seen in area during count period, but not on count day — Common Loon, Bufflehead, Ruddy Duck, Northern Bobwhite, White-breasted Nuthatch, Lapland Longspur.

Audrey L. Flowers, Steven E. Flowers, Thomas L. Flowers (compiler — Box 87, Meade, KS 67864), Mark Goldsberry, Rita Kinney, Ronald Mellard.

Olathe. 38° 55'N, 94° 51'W. Center intersection 119th St. and K7. Habitat coverage: upland deciduous forest 25%, cultivated fields 20%, oldfields and fencerows 15%, lakes and rivers 15%, grasslands 10%, riparian forest 5%, residential areas 5%, marsh 5%. 24 December 1990, no time given, 3° to 23° F; Wind SW, 0-10 m.p.h.; waters mostly frozen, 1-3" snow cover; clear. Eight observers in 5 parties and 6 observers at feeders. Total party-hours 28 (3 on foot, 25 by car) plus 3 hrs owling and 10 hrs at feeders. Total party-miles 282 (3 on foot, 279 by car) and 25 miles owling.

Great Blue Heron 2, Snow Goose (white morph) 18, Canada Goose 1286, Mallard 114, Common Goldeneye 2, Bald Eagle 4, Northern Harrier 2, Sharp-shinned Hawk 1, Red-tailed Hawk 97, Rough-legged Hawk 1, Golden Eagle 1, American Kestrel 19, Merlin 2, Northern Bobwhite 45, Killdeer 2, Ring-billed Gull 10, Rock Dove 133, Mourning Dove 31, Eastern Screech-owl 4, Great Horned Owl 7, Belted Kingfisher 3, Red-headed Woodpecker 1, Red-bellied Woodpecker 30, Yellow-bellied Sapsucker 1, Downy Woodpecker 42, Hairy Woodpecker 9, Northern (Yellow-shafted) Flicker 18, Northern (Red-shafted) Flicker 1, Horned Lark 313, Blue Jay 157, American Crow 337, Black-capped Chickadee 245, Tufted Titmouse 78, Red-breasted Nuthatch 1, White-breasted Nuthatch 11, Brown Creeper 6, Carolina Wren 3, Bewick's Wren 1, Winter Wren 1, Golden-crowned Kinglet 3, Eastern Bluebird 38, American Robin 9, Northern Mockingbird 5, Loggerhead Shrike 6, European Starling 619, Northern Cardinal 242, American Tree Sparrow 646, Song Sparrow 30, White-crowned Sparrow 7, Harris' Sparrow 69, Dark-eyed (Slate-colored) Junco 337, Dark-eyed (Oregon) Junco 1, Lapland Longspur 140, Red-winged Blackbird 2081, Eastern Meadowlark 188, *Sturnella* sp. 38, Rusty Blackbird 4, Common Grackle 5, Brown-headed Cowbird 33, Purple Finch 1, House Finch 12, American Goldfinch 192, House Sparrow 818. Total 60 species (2 additional subspecies), about 8,563 individuals. Seen in area during count period, but not on count day — Red Crossbill.

Jon and Roger Boyd, Elaine and Mark Corder, Steve Crawford (compiler — 529 N. Curtis, Olathe, KS 66061), Lloyd Moore, Carol and Jim Surnan.

Olsburg. 39° 25'N, 96° 39'W. Center 1.5 mi W Olsburg, KS on K16. Habitat coverage: riparian forest 47%, oldfields and fencerows 31%, upland deciduous forest 6%, lakes and rivers 6%, cultivated fields 5%, grasslands 5%. 20 December 1990, 7:30 a.m. to 4 p.m., 10° F; Wind N, 10-20 m.p.h.; most water except flowing rivers and riffles frozen; overcast; light snow; 1" snow cover. Five observers in 1 party. Total party-hours 8.5 (4 on foot, 4.5 by car). Total party-miles 114 (110 by car, 4 on foot).

Wood Duck 2, Mallard 197, Common Merganser 27, Bald Eagle 1, Northern Harrier 13, Red-tailed Hawk 18, American Kestrel 4, Ring-necked Pheasant 17, Northern Bobwhite 43, Ring-billed Gull 4, Rock Dove 18, Mourning Dove 1, Great Horned Owl 2, Barred Owl 1, Belted Kingfisher 1, Red-headed Woodpecker 26, Red-bellied Woodpecker 17, Downy Woodpecker 14, Hairy Woodpecker 2, Northern Flicker ssp. 30, Horned Lark 35, Blue Jay 65, American Crow 558, Black-capped Chickadee 31, Tufted Titmouse 4, White-breasted Nuthatch 12, Brown Creeper 3, Carolina Wren 2, Bewick's Wren 1, Golden-crowned Kinglet 9, Eastern Bluebird 28, American Robin 561, Northern Mockingbird 1, Northern Shrike 1 (excellent details — Ed.), European Starling 13, Yellow-rumped Warbler 2, Palm Warbler 1 (excellent details — Ed.), Northern Cardinal 147, Rufous-sided Towhee 12, American Tree Sparrow 705, Fox Sparrow 14, Song Spar-

row 28, Swamp Sparrow 1, White-throated Sparrow 1, White-crowned Sparrow 4, Harris' Sparrow 26, Dark-eyed Junco ssp. 384, Lapland Longspur 55, Red-winged Blackbird 695, *Sturnella* sp. 47, Purple Finch 3, American Goldfinch 125, House Sparrow 30. Total 53 species, about 4,042 individuals. Seen in area during count period, but not on count day — Townsend's Solitaire, Loggerhead Shrike.

Melissa Brown, Gary Radke, Dave Rintoul (compiler — Div. Biol. Kansas St. Univ., Manhattan, KS 66506-4901), Paul Weidhaas, John Zimmerman.

Oskaloosa-Perry Lake. 39° 12'N, 95° 15'W. Center entrance to Camp Jayhawk, BSA (NE corner sec. 9, T10S, R18E). Habitat coverage: upland deciduous forest 23%, lakes and rivers 23%, oldfields and fencerows 13%, cultivated fields 11%, riparian forest 10%, grasslands 9%, marsh 6%, coniferous stands 4%, residential areas 1%. 16 December 1990, 5:20 a.m. to 5:15 p.m., 25° to 33° F; Wind NE, 5-15 m.p.h.; all water open, overcast with light mist and fog in late P.M. Twenty observers in 7 parties. Total party-hours 61 (12 on foot, 49 by car) plus 4 hrs owling and 2 hrs at feeders. Total party-miles 407 (12 on foot, 395 by car) and 39 miles owling.

Pied-billed Grebe 3, Double-crested Cormorant 85, Great Blue Heron 15, Snow Goose (white morph) 6300, Snow Goose (blue morph) 4200, Canada Goose 12,176, Green-winged Teal 3, Mallard 1415, Northern Pintail 7, Gadwall 17, American Wigeon 24, Redhead 2, Ring-necked Duck 17, Lesser Scaup 29, Black Scoter 2 (good details — Ed.), Common Goldeneye 87, Hooded Merganser 3, Common Merganser 2202, Red-breasted Merganser 1 (excellent details — Ed.), Bald Eagle 27, Northern Harrier 26, Sharp-shinned Hawk 3, Cooper's Hawk 1, *Accipiter* sp. 1, Red-tailed Hawk 116, Rough-legged Hawk 2, American Kestrel 28, Ring-necked Pheasant 5, Wild Turkey 49, Northern Bobwhite 62, American Coot 78, Killdeer 11, Common Snipe 3, Bonaparte's Gull 91 (excellent details — Ed.), Ring-billed Gull 841, Herring Gull 11, *Larus* sp. 16, Rock Dove 61, Mourning Dove 12, Eastern Screech-owl 13, Great Horned Owl 17, Barred Owl 9, Belted Kingfisher 6, Red-headed Woodpecker 37, Red-bellied Woodpecker 63, Yellow-bellied Sapsucker 1, Downy Woodpecker 77, Hairy Woodpecker 13, Northern (Yellow-shafted) Flicker 51, Northern Flicker ssp. 101, Horned Lark 6, Blue Jay 267, American Crow 338, Black-capped Chickadee 282, Tufted Titmouse 65, White-breasted Nuthatch 61, Brown Creeper 11, Carolina Wren 10, Golden-crowned Kinglet 30, Ruby-crowned Kinglet 6, Eastern Bluebird 103, Hermit Thrush 1 (excellent details — Ed.), American Robin 476, Northern Mockingbird 17, Cedar Waxwing 406, Loggerhead Shrike 10, European Starling 2100, Northern Cardinal 294, Rufous-sided Towhee 4, American Tree Sparrow 750, Field Sparrow 6, Savannah Sparrow 2, Song Sparrow 41, Lincoln's Sparrow 2, Swamp Sparrow 4, White-throated Sparrow 2, White-crowned Sparrow 2, Harris' Sparrow 206, Dark-eyed (Slate-colored) Junco 268, Dark-eyed (Oregon) Junco 11, Dark-eyed Junco ssp. 852, Red-winged Blackbird 2132, Eastern Meadowlark 48, Western Meadowlark 2, *Sturnella* sp. 147, Rusty Blackbird 134, Brewer's Blackbird 1000, Common Grackle 2, Brown-headed Cowbird 1, Purple Finch 39, House Finch 10, Pine Siskin 1, American Goldfinch 252, House Sparrow 382. Total 87 species (1 additional subspecies), about 39,203 individuals.

Mary Allen, Joanne Brier, Dave Bryan, Beverly Evans, Ruth Fauhl, Bob Fisher, Lin Fredericksen, Maxey Irwin, Jennifer Jones, Eulalia Lewis, Gene Lewis, Mick McHugh, Sarah Merrill, Lloyd Moore, Galen Pittman, Bob Rucker, Richard Rucker (compiler — 121 E. 17th St., Lawrence, KS 66044-4233), Dawn Sharp, Roseanne Smith, Phil Wedge.

Pawnee-Rush Counties. 38° 21'N, 99° 26'W. Center Nekoma Rd. and the Rush-Pawnee County line. Habitat coverage: grassland 50%, cultivated fields 30%, oldfields and fencerows 15%, coniferous stands 5%. 1 January 1991. 7 a.m. to 6 p.m., 10° to 50° F; Wind, var., 0-10 m.p.h.; waters frozen, 3" snow cover and melting; clear. One observer in 1 party and 1 observer at feeder. Total party-hours 10.5 (2 on foot, 8.5 by car) plus 2.5 hrs at feeder. Total party-miles 146 (1 on foot, 145 by car).

Northern Harrier 84, Cooper's Hawk 1, Red-tailed Hawk 51, Ferruginous Hawk 3, Rough-legged Hawk 26, Golden Eagle 2, American Kestrel 5, Prairie Falcon 9, Ring-

necked Pheasant 15, Greater Prairie-chicken 5, Rock Dove 1, Mourning Dove 1, Eastern Screech-owl 3, Great Horned Owl 7, Short-eared Owl 15, Red-bellied Woodpecker 2, Downy Woodpecker 5, Hairy Woodpecker 1, Northern (Yellow-shafted) Flicker 3, Northern (Red-shafted) Flicker 2, Horned Lark 1080, Black-billed Magpie 20, American Crow 55, Black-capped Chickadee 3, White-breasted Nuthatch 1, Townsend's Solitaire 3, American Robin 85, Cedar Waxwing 20, European Starling 300, Yellow-rumped (Myrtle) Warbler 1, Northern Cardinal 3, American Tree Sparrow 700, Harris' Sparrow 120, Dark-eyed (Slate-colored) Junco 30, Dark-eyed (Oregon) Junco 1, Lapland Longspur 300, Red-winged Blackbird 5100, Western Meadowlark 400, Brown-headed Cowbird 2, House Finch 1, American Goldfinch 15, House Sparrow 350. Total 40 species (2 additional subspecies), about 8,831 individuals.

Diane Seltman, Scott Seltman (compiler — RR1, Nekoma, KS 67559).

Pomona Lake. 38° 41'N, 95° 41'W. Center Carbolyn Park on Dagoon Creek. Habitat coverage: riparian forest 20%, cultivated fields 15% lakes and rivers 15%, grasslands 10%, upland deciduous forest 10%, coniferous stands 10%, residential areas 5%, old-fields and fencerows 5%. 22 December 1990. 7:50 a.m. to 4:50 p.m., -4° to -1° F; Wind NNW, 13 m.p.h., gusts to 23 m.p.h.; Pomona Lake with 20% shoreline ice, overcast, snow in P.M. Six observers in 2 parties. Total party-hours 14 (4 on foot, 10 by car). Total party-miles 126 (5 on foot, 121 by car).

American White Pelican 1, Great Blue Heron 3, Snow Goose (white morph) 26, Canada Goose 228, Canada Goose (small race) 2, Mallard 190, Northern Pintail 19, Common Merganser 27, Bald Eagle 1, Northern Harrier 11, Red-tailed Hawk 20, *Buteo* sp. 4, American Kestrel 5, Wild Turkey 2, Northern Bobwhite 66, Ring-billed Gull 51, Mourning Dove 23, Barred Owl 1, Red-bellied Woodpecker 11, Downy Woodpecker 12, Hairy Woodpecker 1, Northern (Yellow-shafted) Flicker 9, Northern Flicker ssp. 12, Horned Lark 11, Blue Jay 17, American Crow 48, Black-capped Chickadee 30, Tufted Titmouse 3, Red-breasted Nuthatch 1, White-breasted Nuthatch 1, Winter Wren 3, Golden-crowned Kinglet 3, Eastern Bluebird 40, American Robin 24, European Starling 116, Northern Cardinal 122, American Tree Sparrow 656, Lincoln's Sparrow 1, Harris' Sparrow 119, Dark-eyed (Oregon) Junco 2, Dark-eyed Junco ssp. 433, Red-winged Blackbird 270, Eastern Meadowlark 61, Rusty Blackbird 160, Brown-headed Cowbird 10, American Goldfinch 2, House Sparrow 72. Total 43 species (1 additional subspecies), about 2,930 individuals.

Candy Crane, Lukas Crane, Bob Culbertson, Carol Culbertson, Bunnie Watkins (compiler — 3212 W. 24th St. Terrace, Lawrence, KS 66047), Dan Williamson.

Quivira National Wildlife Refuge. 38° 09'N, 98° 29'W. Center Refuge subheadquarters. Habitat coverage: grasslands 80% cultivated fields 10%, marsh 10%. 21 December 1990, 8 a.m. to 4 p.m. 0° to 10° F; Wind N, 10-15 m.p.h.; all water frozen, overcast, occasional light snow. Fifteen observers in 3 parties. Total party-hours 25.5 (8 on foot, 17.5 by car). Total party-miles 154 (8 on foot, 146 by car).

American White Pelican 50, Greater White-fronted Goose 148, Snow Goose 243, Canada Goose 3781, Mallard 25, Common Goldeneye 3, Common Merganser 1, Bald Eagle 13, Northern Harrier 65, Sharp-shinned Hawk 12, Cooper's Hawk 5, Red-tailed Hawk 59, Rough-legged Hawk 1, American Kestrel 13, Merlin 2, Peregrine Falcon 1, Prairie Falcon 3, Ring-necked Pheasant 61, Wild Turkey 12, Northern Bobwhite 402, Sandhill Crane 1083, Ring-billed Gull 1, Rock Dove 4, Mourning Dove 36, Eastern Screech-owl 3, Great Horned Owl 19, Barred Owl 1, Red-bellied Woodpecker 20, Downy Woodpecker 33, Hairy Woodpecker 10, Northern (Yellow-shafted) Flicker 42, Northern (Red-shafted) Flicker 5, Northern Flicker ssp. 118, Horned Lark 345, Blue Jay 26, Black-billed Magpie 10, American Crow 108, Black-capped Chickadee 80, Tufted Titmouse 2, White-breasted Nuthatch 8, Brown Creeper 3, Golden-crowned Kinglet 5, Eastern Bluebird 45, Townsend's Solitaire 1, American Robin 80, Northern Mockingbird 2, Brown Thrasher 1, Loggerhead Shrike 5, European Starling 340, Northern Cardinal 112, Rufous-sided Towhee 8, American Tree Sparrow 3071, Field Sparrow 2, Song Spar-

row 39, Lincoln's Sparrow 7, Swamp Sparrow 1, White-crowned Sparrow 18, Harris' Sparrow 685, Dark-eyed (Slate-colored) Junco 349, Dark-eyed (Oregon) Junco 3, Lapland Longspur 25, Red-winged Blackbird 1444, *Sturnella* sp. 316, Yellow-headed Blackbird 1, Brewer's Blackbird 24, Great-tailed Grackle 35, Common Grackle 6, Brown-headed Cowbird 288, American Goldfinch 115, House Sparrow 61. Total 67 species (2 additional subspecies), about 13,946 individuals.

Jim Barnes, Wallace Champeny, Patrick D. Gonzales (non-participating compiler — Rt. 3, Box 48C, Stafford, KS 67578), Rick Goodrick, Pete Janzen, Dan Kilby, Gary Meggers, Jay Newton, Jim Nichol, John Northrup, David Rintoul, Dan Schaad, Andrea and Chris Smith, Don Vannoy, John Zimmerman.

Salina. 38° 50'N, 97° 38'W. Center State Street Rd. 1 mi W of Ninth Street, Salina, KS. Habitat coverage: residential areas 21%, grasslands 19%, cultivated fields 18%, riparian forest 15%, oldfields and fencerows 13%, lakes and rivers 10%, coniferous stands 4%. 15 December 1990. 7:30 a.m. to 5:30 p.m., 30° to 42° F; Wind N, 10 m.p.h.; clear; waters open. Twenty observers in 5 parties and 2 observers at feeders. Total party-hours 38 (19 on foot, 19 by car) plus 3 hrs at feeders. Total party-miles 305.5 (13.5 on foot, 292 by car).

Great Blue Heron 1, Green-backed Heron 1 (no details — Ed.), Canada Goose 7, Green-winged Teal 20, Mallard 210, Northern Pintail 23, Northern Shoveler 4, Gadwall 50, American Wigeon 25, Canvasback 3, Redhead 2, Ring-necked Duck 6, Common Goldeneye 3, Hooded Merganser 1, Northern Harrier 56, Red-tailed Hawk 91, Red-tailed (Harlan's) Hawk 2, Ferruginous Hawk 1, Rough-legged Hawk 3, *Buteo* sp. 12, American Kestrel 23, Prairie Falcon 2, Ring-necked Pheasant 52, Northern Bobwhite 54, Rock Dove 383, Mourning Dove 14, Great Horned Owl 6, Barred Owl 1, Long-eared Owl 6 (excellent details — Ed.), Belted Kingfisher 3, Red-bellied Woodpecker 18, Downy Woodpecker 15, Hairy Woodpecker 5, Northern (Yellow-shafted) Flicker 8, Northern (Red-shafted) Flicker 3, Northern Flicker ssp. 26, Horned Lark 568, Blue Jay 7, Black-billed Magpie 4, American Crow 116, Black-capped Chickadee 158, Tufted Titmouse 10, White-breasted Nuthatch 13, Brown Creeper 7, Carolina Wren 2, Golden-crowned Kinglet 2, Ruby-crowned Kinglet 3, American Robin 10, Loggerhead Shrike 4, European Starling 2688, Northern Cardinal 85, American Tree Sparrow 188, Song Sparrow 2, Harris' Sparrow 203, Dark-eyed Junco ssp. 178, Red-winged Blackbird 1659, Western Meadowlark 1, *Sturnella* sp. 449, Brewer's Blackbird 163, Common Grackle 8, Brown-headed Cowbird 1, House Finch 1, American Goldfinch 46, Evening Grosbeak 2 (excellent details — Ed.), House Sparrow 556. Total 60 species (2 additional subspecies), about 8,274 individuals. Seen in area during count period, but not on count day — Greater Prairie-chicken, Wild Turkey, Purple Finch.

Cynthia Abbott, Cheryl Balaun, Steve Burr, David and Nancy Clark, Don Denison, David, Kevin, and Lisa Haight, Glen Lakes, Harold and Virginia Lear (compiler — 612 Max Ave., Salina, KS 67401), Charles and Ivy Marsh, Shannon Rayl, Marge and Ray Streckfus, Randy Sulton, George Tran, John Wachholz (Smoky Hills Audubon Society).

Sawyer. 37° 32'N, 98° 41'W. Center SE corner sec. 11, T29S, R31W, Pratt Co., 2 mi N, 1 mi W junction U.S. 281 and K42. Habitat coverage: cultivated fields 40%, riparian woodland 40%, grasslands 10%, residential areas 5%, oldfields and fencerows 5%. 6 January 1991. 8:15 a.m. to 5 p.m., 15° to 24° F; Wind N, 5-8 m.p.h.; streams open, ponds frozen; overcast A.M., partly sunny P.M. Thirteen observers in 3 parties. Total party-hours 24 (12 on foot, 12 by car). Total party-miles 147 (10 on foot, 137 by car).

Great Blue Heron 10, Canada Goose 2967, Green-winged Teal 4, Mallard 1072, American Wigeon 3, Common Goldeneye 1, Bald Eagle 2, Northern Harrier 9, Cooper's Hawk 5, Red-tailed Hawk 33, Golden Eagle 3, Merlin 4, Prairie Falcon 1, Ring-necked Pheasant 12, Wild Turkey 30, Northern Bobwhite 20, Killdeer 2, Common Snipe 7, Rock Dove 14, Great Horned Owl 7, Barred Owl 3, Belted Kingfisher 9, Red-bellied Woodpecker 28, Yellow-bellied Sapsucker 1, Downy Woodpecker 27, Hairy Woodpecker 6, Northern (Yellow-shafted) Flicker 24, Northern (Red-shafted) Flicker 23, Northern

Flicker ssp. 11, Horned Lark 524, Blue Jay 1, American Crow 267, Black-capped Chickadee 127, Tufted Titmouse 23, White-breasted Nuthatch 17, Brown Creeper 2, Carolina Wren 1, Winter Wren 3, Eastern Bluebird 37, Townsend's Solitaire 2, American Robin 340, Cedar Waxwing 7, Loggerhead Shrike 3, European Starling 570, Yellow-rumped (Myrtle) Warbler 3, Northern Cardinal 33, American Tree Sparrow 139, Song Sparrow 11, Harris' Sparrow 88, Dark-eyed (Slate-colored) Junco 36, Dark-eyed Junco ssp. 225, Lapland Longspur 391, Red-winged Blackbird 1273, Western Meadowlark 114, Brewer's Blackbird 1, American Goldfinch 98, House Sparrow 288. Total 54 species (1 additional subspecies), about 8,962 individuals.

Ken Brunson, Tom Dillenbeck, Bob Hartmann, John Herron, Scott Hillard, Bill Hlavachick, Kent Montei, Jane Queal, Eric Schenck, Lauren Sill, Byron Walker, June Walker, Bob Wood (compiler — 502 Commodore, Pratt, KS 67124).

Scott Lake. 38° 35'N, 100° 56'W. Center 7 mi N junction U.S. 83 and K96. Habitat coverage: riparian woodland 40%, residential areas 25%, cultivated fields 10%, marsh 10%, grasslands 5%, lakes and rivers 5%, coniferous stands 5%. 5 January 1991. 7:30 a.m. to 5 p.m., 17° to 20° F; Wind N, 5-10 m.p.h.; lake frozen, spring-fed marshes open; 75% snow cover; cloudy. Nine observers in 4 parties and 6 observers at feeders plus 1 "wild turkey" observer. Total party-hours 30 (11 on foot, 19 by car) plus 28 hrs at feeders. Total party-miles 236 (10 on foot, 226 by car).

Great Blue Heron 1, Wood Duck 1, Green-winged Teal 3, Mallard 154, Northern Pintail 1, Common Goldeneye 1, Bald Eagle 3, Northern Harrier 16, Sharp-shinned Hawk 2, Red-tailed Hawk 19, Ferruginous Hawk 12, Rough-legged Hawk 20, American Kestrel 9, Merlin 2, Prairie Falcon 5, Ring-necked Pheasant 12, Wild Turkey 55, Common Snipe 1, Rock Dove 27, Eastern Screech-owl 1, Great Horned Owl 7, Short-eared Owl 1, Belted Kingfisher 2, Red-bellied Woodpecker 5, Downy Woodpecker 11, Hairy Woodpecker 5, Northern (Yellow-shafted) Flicker 15, Northern (Red-shafted) Flicker 31, Northern Flicker ssp. 15, Horned Lark 32,809 (! — Ed.), Blue Jay 8, Black-billed Magpie 41, Black-capped Chickadee 63, White-breasted Nuthatch 7, Brown Creeper 6, Marsh Wren 3, Golden-crowned Kinglet 4, Eastern Bluebird 6, Townsend's Solitaire 37, American Robin 178, Northern Mockingbird 1, Bohemian Waxwing 1 (photo — Ed.), Cedar Waxwing 156, Northern Shrike 3, Loggerhead Shrike 2, European Starling 919, Northern Cardinal 6, Rufous-sided Towhee 2, American Tree Sparrow 221, Field Sparrow 5, Fox Sparrow 1, Song Sparrow 15, White-crowned Sparrow 17, Harris' Sparrow 25, Dark-eyed (Slate-colored) Junco 136, Dark-eyed (Oregon) Junco 134, Dark-eyed Junco ssp. 5, Lapland Longspur 21,057, Red-winged Blackbird 88, Western Meadowlark 57, Common Grackle 1, Purple Finch 9, House Finch 102, American Goldfinch 106, Evening Grosbeak 3, House Sparrow 2537. Total 62 species (2 additional subspecies), about 59,208 individuals. Seen in area during count period, but on count day — Yellow-bellied Sapsucker, American Crow, Pine Siskin.

Robbie Dockter, Edith Haverfield, Jane Kimball, Art Nonhof, Marie Osterbuhr, Betty Rich, Leonard Rich, Ron Riner, Kathy Robinson, Pat Rudolph, Diane Seltman, Scott Seltman, Sara Shane and Tom Shane (compilers — 1706 Belmont Pl., Garden City, KS 67846), Kay Sims, Eva Young.

Topeka. 39° 02'N, 95° 40'W. Center State capitol. Habitat coverage: residential areas 25%, oldfields and fencerows 20%, lakes and rivers 15%, riparian forest 15%, upland deciduous forest 10%, cultivated fields 10%, grasslands 5%. 15 December 1990. 7 a.m. to 5:30 p.m., 35° to 45° F; Wind W, 10-20 m.p.h.; waters open, cloudy A.M., partly cloudy P.M. Thirty-three observers in 13 parties and 9 observers at feeders. Total party-hours 95.5 (54.5 on foot, 41 by car) plus 59 hrs at feeders. Total party-miles 408.5 (56.5 on foot, 352 by car).

Pied-billed Grebe 5, Double-crested Cormorant 8, Great Blue Heron 12, Greater White-fronted Goose 1, Canada Goose 326, Wood Duck 2, Mallard 1568, Gadwall 5, Ring-necked Duck 55, Lesser Scaup 4, Common Goldeneye 71, Bufflehead 23, Common Merganser 10, Turkey Vulture 3 (no details — Ed.), Bald Eagle 8, Northern Harrier 16,

Sharp-shinned Hawk 5, Red-tailed Hawk 94, Rough-legged Hawk 1, American Kestrel 23, Peregrine Falcon 1, Ring-necked Pheasant 4, Northern Bobwhite 129, American Coot 46, Killdeer 2, Common Snipe 3, Franklin's Gull 1 (excellent details — Ed.), Ring-billed Gull 830, Rock Dove 1424, Mourning Dove 213, Eastern Screech-owl 2, Great Horned Owl 9, Barred Owl 1, Belted Kingfisher 9, Red-headed Woodpecker 6, Red-bellied Woodpecker 73, Yellow-bellied Sapsucker 4, Downy Woodpecker 66, Hairy Woodpecker 15, Northern (Yellow-shafted) Flicker 80, Northern (Red-shafted) Flicker 3, Northern Flicker ssp. 17, Horned Lark 4, Blue Jay 196, American Crow 274, Black-capped Chickadee 369, Tufted Titmouse 59, Red-breasted Nuthatch 4, White-breasted Nuthatch 41, Brown Creeper 9, Carolina Wren 8, Winter Wren 3, Golden-crowned Kinglet 16, Ruby-crowned Kinglet 1, Eastern Bluebird 67, American Robin 792, Northern Mockingbird 5, Brown Thrasher 1, Cedar Waxwing 144, Loggerhead Shrike 4, European Starling 6492, Yellow-rumped (Myrtle) Warbler 6, Northern Cardinal 345, Rufous-sided Towhee 5, American Tree Sparrow 310, Field Sparrow 4, Vesper Sparrow 1, Fox Sparrow 1, Song Sparrow 17, Lincoln's Sparrow 4, White-throated Sparrow 14, White-crowned Sparrow 8, Harris' Sparrow 108, Dark-eyed (Slate-colored) Junco 1132, Dark-eyed (Oregon) Junco 7, Dark-eyed Junco ssp. 61, Lapland Longspur 15, Red-winged Blackbird 293, Eastern Meadowlark 82, Western Meadowlark 34, *Sturnella* sp. 29, Common Grackle 45, Brown-headed Cowbird 2, Purple Finch 13, House Finch 150, Pine Siskin 7, American Goldfinch 224, House Sparrow 937. Total 83 species (2 additional subspecies), about 17,521 individuals. Seen in area during count period, but not on count day — Merlin, Wild Turkey.

Virgil Basgall, Jim and Joanne Brier, Marty Burke, Scott Campbell, Walter Cole, Marge Dennis, Lois Duffens, Jeanne Dunbar, Bev Evans, Patty Field, Bob Foster, Dan Gish, Bob Glazier, Dean and Gladys Grisell, Gary Daden, Gwen Haegert, Phyllis Henney, Patsy Hodges, Peggy Howard, Maxey Irwin, Scotty Johnson, Charles Cauffman, Dan Larson, Bob and Cathy Lawson, Edith Lessenden, E. M. and E. R. Lewis (compiler — 1285 MacVicar Ave., Topeka, KS 66604), Donna Mall, Brad May, Sarah Merrill, Linda Mowbray, E. E. North, Joanne Ramberg, John Row, Barbara Shepard, Pat Stein, Grace White, Lil and Paul Willis.

Tribune. 38° 27'N, 101° 45'W. Center Tribune, KS. Habitat coverage: grasslands, cultivated fields, residential areas (%'s not given). 27 December 1990. 10 a.m. to 2 p.m., 42° F; Wind calm. Five observers and 5 observers at feeders.

Canada Goose 30, *Buteo* sp. 1, Golden Eagle 2, Merlin 1, Prairie Falcon 3, Ring-necked Pheasant 1, Wild Turkey 1, Great Horned Owl 3, Horned Lark 100's, Blue Jay 3, Black-billed Magpie 1, Black-capped Chickadee 1, White-breasted Nuthatch 2, American Robin 6, Brown Thrasher 1, Dark-eyed (Slate-colored) Junco 6, Brown-headed Cowbird 1, Purple Finch 1, House Finch 33, House Sparrow 100's. Total 20 species, number of individuals not known. Seen during count period, but not on count day — Mourning Dove, Northern (Yellow-shafted) Flicker, Northern (Red-shafted) Flicker, Brown Creeper, Northern Mockingbird, Cedar Waxwing, Red-winged Blackbird, Pine Siskin, Evening Grosbeak.

D. Luverne Keith (compiler — 606 4th St., Box 143, Tribune, KS 67879), others not named.

Udall-Winfield. 37° 16'N, 96° 59'W. Center water tower at Winfield State Training School. Habitat coverage: oldfields and fencerows 35%, riparian forest 20%, grasslands 20%, cultivated fields 15%, residential areas 5%, lakes and rivers 5%. 16 December 1990. 8 a.m. to 5 p.m., 36° to 39° F; Wind S, 0-5 m.p.h.; waters open; light rain. Thirteen observers in 5 parties. Total party-hours 36 (9 on foot, 27 by car) plus 3 hrs owling. Total party-miles 365 (6 on foot, 359 by car) and 32 miles owling.

Great Blue Heron 7, Snow Goose (white morph) 6, Snow Goose (blue morph) 1, Canada Goose 214, Mallard 535, Redhead 1, Common Goldeneye 25, Bufflehead 3, Common Merganser 5, Bald Eagle 3, Northern Harrier 9, Sharp-shinned Hawk 2, Red-tailed Hawk 92, American Kestrel 58, Prairie Falcon 1, Ring-necked Pheasant 5,

Wild Turkey 161, Northern Bobwhite 101, Killdeer 4, Bonaparte's Gull 1, Ring-billed Gull 9, Rock Dove 123, Mourning Dove 45, Great Horned Owl 6, Barred Owl 5, Belted Kingfisher 6, Red-headed Woodpecker 27, Red-bellied Woodpecker 72, Yellow-bellied Sapsucker 1, Downy Woodpecker 41, Hairy Woodpecker 9, Northern (Yellow-shafted) Flicker 39, Northern (Red-shafted) Flicker 2, Pileated Woodpecker 2, Horned Lark 673, Blue Jay 79, American Crow 167, Black-capped Chickadee 52, Carolina Chickadee 143, Tufted Titmouse 59, Red-breasted Nuthatch 2, White-breasted Nuthatch 25, Brown Creeper 5, Carolina Wren 10, Bewick's Wren 2, Winter Wren 2, Golden-crowned Kinglet 6, Ruby-crowned Kinglet 1, Eastern Bluebird 10, American Robin 68, Northern Mockingbird 9, Brown Thrasher 1, Cedar Waxwing 83, Loggerhead Shrike 12, European Starling 972, Northern Cardinal 298, American Tree Sparrow 767, Field Sparrow 4, Song Sparrow 55, Lincoln's Sparrow 1, White-throated Sparrow 1, White-crowned Sparrow 3, Harris' Sparrow 1525, Dark-eyed (Slate-colored) Junco 852, Lapland Longspur 701, Smith's Longspur 20, Red-winged Blackbird 679, Eastern Meadowlark 1, Western Meadowlark 1, *Sturnella* sp. 380, Rusty Blackbird 70, Brewer's Blackbird 155, Brown-headed Cowbird 60, House Finch 3, Common Redpoll 2, Pine Siskin 90, House Sparrow 389. Total 74 species (1 additional subspecies), about 10,059 individuals.

Betty and Duane Anderson, James Barnes, Wallace Champeny (compiler — RR1, Oxford, KS 67119), Dan Kilby, Mike Lesan, Eddie and Savilla Stegall, Don Vannoy, Gerald Wiens, Donna and Lee Wilt, Robert Wimmer.

Western Stafford County (formerly St. John). 37° 58'N, 98° 40'W. Center stop sign 7.5 mi W St. John, KS on First Street. Habitat coverage: cultivated fields, oldfields and fencerows, grasslands (no percentages given). 31 December 1990. 7:30 a.m. to 5:30 p.m., 0° to 15° F; Wind S to SE, 5-25 m.p.h.; all waters frozen, light snow cover. Seven observers in 5 parties and 2 observers at feeders. Total party-hours 10 (1 on foot, 9 by car) plus 0.5 hrs owling and 2 hrs at feeders. Total party-miles 250 (2 on foot, 248 by car) and 2 miles owling.

Northern Harrier 19, Red-tailed Hawk 13, Rough-legged Hawk 3, American Kestrel 9, Prairie Falcon 1, Ring-necked Pheasant 16, Wild Turkey 20, Northern Bobwhite 43, Rock Dove 27, Barn Owl 2, Great Horned Owl 5, Red-bellied Woodpecker 2, Yellow-bellied Sapsucker 3, Downy Woodpecker 2, Hairy Woodpecker 4, Northern Flicker ssp. 2, Blue Jay 11, Black-billed Magpie 5, American Crow 12, Black-capped Chickadee 16, Red-breasted Nuthatch 2, American Robin 6, Brown Thrasher 3, Northern Shrike 1, European Starling 159, Northern Cardinal 13, American Tree Sparrow 193, Field Sparrow 30, Lark Sparrow 4 (excellent details — Ed.), Harris' Sparrow 132, Dark-eyed (Slate-colored) Junco 72, Red-winged Blackbird 55, *Sturnella* sp. 654, Brewer's Blackbird 154, Brown-headed Cowbird 40, House Finch 543, American Goldfinch 51. Total 37 species, about 2,327 individuals. Seen in area during count period, but not on count day — Canada Goose, Mallard, Blue-winged Teal (no details — Ed.), Bald Eagle, Pine Siskin.

Mr. and Mrs. Gene Barr, Justin Bookstore, Mariah Tanner, Judy Tanner (compiler — Rt. 1, Box 85, St. John, KS 67576), Jake Tanner, John Tanner.

Wichita. 37° 41'N, 97° 20'W. Center confluence of Arkansas and Little Arkansas rivers. Habitat coverage: riparian forest 55%, lakes and rivers 20%, residential areas 15%, oldfields and fencerows 10%. 15 December 1990. 8 a.m. to 5 p.m., 34° to 48° F; Wind NW, 0-5 m.p.h.; waters open, clear to partly cloudy. Nineteen observers in 6 parties and 3 observers at feeders. Total party-hours 44 (24 on foot, 20 by car) plus 8 hrs at feeders. Total party-miles 320 (19 on foot, 301 by car).

Pied-billed Grebe 2, Double-crested Cormorant 3, Great Blue Heron 29, Canada Goose 3514, Wood Duck 2, Green-winged Teal 23, Mallard 1288, Northern Pintail 3, Gadwall 150, American Wigeon 5, Canvasback 15, Redhead 13, Ring-necked Duck 59, Lesser Scaup 44, Common Goldeneye 96, Bufflehead 20, Hooded Merganser 10, Ruddy Duck 1, Bald Eagle 2, Northern Harrier 2, Sharp-shinned Hawk 5, Red-tailed Hawk 46, Red-tailed (Harlan's) Hawk 1, Rough-legged Hawk 3, American Kestrel 19, Ring-

necked Pheasant 15, Wild Turkey 1, Northern Bobwhite 42, American Coot 85, Killdeer 17, Common Snipe 2, Ring-billed Gull 1619, Herring Gull 1, Rock Dove 1087, Mourning Dove 24, Eastern Screech-owl 2, Great Horned Owl 11, Belted Kingfisher 8, Red-bellied Woodpecker 10, Yellow-bellied Sapsucker 1, Downy Woodpecker 42, Hairy Woodpecker 10, Northern (Yellow-shafted) Flicker 23, Northern (Red-shafted) Flicker 4, Horned Lark 57, Blue Jay 74, American Crow 6937, Black-capped Chickadee 189, Tufted Titmouse 34, White-breasted Nuthatch 10, Brown Creeper 11, Carolina Wren 28, Golden-crowned Kinglet 13, Ruby-crowned Kinglet 1, American Robin 81, Northern Mockingbird 8, Cedar Waxwing 21, Loggerhead Shrike 3, European Starling 4949, Yellow-rumped (Myrtle) Warbler 54, Northern Cardinal 298, Tufous-sided Towhee 5, American Tree Sparrow 301, Song Sparrow 84, Swamp Sparrow 1, White-throated Sparrow 25, White-crowned Sparrow 1, Harris' Sparrow 482, Dark-eyed (Slate-colored) Junco 791, Dark-eyed (Oregon) Junco 3, Red-winged Blackbird 42, Eastern Meadowlark 1, Western Meadowlark 1, *Sturnella* sp. 217, Great-tailed Grackle 631, Common Grackle 13, Brown-headed Cowbird 57, Purple Finch 2, House Finch 15, Pine Siskin 2, American Goldfinch 167, House Sparrow 1441. Total 78 species (3 additional subspecies), about 25,409 individuals.

Walker Butin, Wallace Champeny (compiler — RRI, Oxford, KS 67119), Beverly DuGay, Rick Goodrick, Bob Gress, Joanne Hackerott, John Hankins, Dan Kilby, Mike Lesan, Jim Mason, John Northrup, Jean and Miriam Roark, Jay Soule, Eddie and Savilla Stegall, Tammy Troutman, Don Vannoy, Gerald Wiens.

Wilson Reservoir. 38° 56'N, 98° 34'W. Center northernmost point of Minooka Park (6 mi NNE of Dorrance, KS). Habitat coverage: riparian woodland 25%, lakes and rivers 20%, grasslands 20%, oldfields and fencerows 15%, coniferous stands 10%, cultivated fields 5%, residential areas 3%, marsh 2%. 15 December 1990. 7:30 a.m. to 5 p.m., 27° to 47° F; Wind W-NW, 15-30 m.p.h., waters open, clear with increasing clouds and diminishing wind in P.M. Twelve observers in 6 parties. Total party-hours 43 (15 on foot, 28 by car). Total party-miles 390 (10 on foot, 380 by car).

Double-crested Cormorant 1, Great Blue Heron 2, Canada Goose 680, Green-winged Teal 70, Mallard 445, Gadwall 34, American Wigeon 13, Redhead 1, Lesser Scaup 3, Common Goldeneye 111, Bufflehead 31, Hooded Merganser 14, Common Merganser 86, Bald Eagle 14, Northern Harrier 87, Sharp-shinned Hawk 1, Cooper's Hawk 1, *Accipiter* sp. 1, Red-tailed Hawk 75, Ferruginous Hawk 1, Rough-legged Hawk 4, Golden Eagle 2, American Kestrel 29, Merlin 3, Ring-necked Pheasant 24, Northern Bobwhite 130, American Coot 70, Sandhill Crane 12 (excellent details — Ed.), Common Snipe 1, Bonaparte's Gull 171 (excellent details — Ed.), Ring-billed Gull 519, Herring Gull 41, Rock Dove 18, Mourning Dove 3, Barn Owl 1, Eastern Screech-owl 1, Great Horned Owl 3, Long-eared Owl 3, Belted Kingfisher 5, Red-bellied Woodpecker 5, Downy Woodpecker 12, Northern (Yellow-bellied) Flicker 32, Northern (Red-shafted) Flicker 9, Horned Lark 352, Blue Jay 1, Black-billed Magpie 7, American Crow 153, Black-capped Chickadee 43, White-breasted Nuthatch 2, Winter Wren 1, Golden-crowned Kinglet 9, Eastern Bluebird 1, Mountain Bluebird 1, Townsend's Solitaire 2, American Robin 87, Northern Shrike 2, Loggerhead Shrike 6, European Starling 500, Yellow-rumped (Myrtle) Warbler 2, Northern Cardinal 28, American Tree Sparrow 1884, Song Sparrow 2, White-crowned Sparrow 16, Harris' Sparrow 141, Dark-eyed (Slate-colored) Junco 192, Dark-eyed (Oregon) Junco 7, Dark-eyed Junco ssp. 10, Lapland Longspur 40, Red-winged Blackbird 1281, Western Meadowlark 135, Brewer's Blackbird 15, Brown-headed Cowbird 5, House Finch 2, American Goldfinch 122, House Sparrow 55. Total 71 species (2 additional subspecies), about 7,873 individuals. Seen in area during count period, but not on count day — Common Loon, Greater White-fronted Goose, Snow Goose (white morph), Greater Prairie-chicken, Cedar Waxwing.

Jim Barnes, Jeri and Tom Cannon (compiler — 908 W. Meadowbrook Rd., Iola, KS 66749), Karen Ganoung, Kris Ganoung, Margaret and Steve Linderer, Greg Nichols, James and Jean Piland, Mike Rader, Scott Seltman.

Yoder. 37° 54'N, 97° 52'W. Center 3 mi S Yoder, KS on the Yoder-Cheyney Rd. at intersection with Arlington Rd. Habitat coverage: riparian woodland 25%, oldfields and fencerows 25%, cultivated fields 25%, lakes and rivers 15%, residential areas 5%, grasslands 5%. 15 December 1990. 7:30 a.m. to 5 p.m., 38° to 45° F; Wind NW, 20-25 m.p.h., all waters open. Twelve observers in 4 parties. Total party-hours 29 (9 on foot, 20 by car). Total party-miles 183 (18 on foot, 165 by car).

Great Blue Heron 2, Canada Goose 5003, Mallard 63, Osprey 1 (no details — Ed.), Northern Harrier 25, Red-tailed Hawk 26, Rough-legged Hawk 5, American Kestrel 24, Merlin 2, Prairie Falcon 2, Ring-necked Pheasant 9, Wild Turkey 8, Northern Bobwhite 61, Killdeer 1, Ring-billed Gull 188, Rock Dove 54, Great Horned Owl 3, Red-bellied Woodpecker 10, Downy Woodpecker 4, Hairy Woodpecker 4, Northern (Yellow-shafted) Flicker 39, Horned Lark 300, Blue Jay 21, American Crow 317, Black-capped Chickadee 38, White-breasted Nuthatch 2, Eastern Bluebird 7, Townsend's Solitaire 1, American Robin 85, Northern Mockingbird 1, Brown Thrasher 3, Loggerhead Shrike 2, European Starling 1148, Yellow-rumped (Myrtle) Warbler 2, Northern Cardinal 71, American Tree Sparrow 348, Song Sparrow 24, White-crowned Sparrow 2, Harris' Sparrow 284, Dark-eyed Junco ssp. 107, Red-winged Blackbird 1526, *Sturnella* sp. 368, Brewer's Blackbird 134, Common Grackle 5, American Goldfinch 31, House Sparrow 643. Total 46 species, about 11,004 individuals. Seen in area during count period (almost), but not on count day — Bald Eagle, Red Crossbill.

Wendy Beckemeier, Lorena Combs, Dan Dyck, Edward Dyck, Jennifer Dyck, Tony Dyck, Allen Harrison, Jean Muncrief, Art Simonetti, Jim Smith (compiler — 3002 East 30th, Hutchinson, KS 67502), Francis Webb, Marcalee Webb.

Div. Biol., Kansas St. Univ., Manhattan, KS 66506.

First Anna's Hummingbird in Kansas — On 16 September 1990 Wallace Champeny called to inform us that a Rufous Hummingbird (*Selasphorus rufus*) was at his feeder in Oxford, Sumner County, Kansas, and that another hummingbird suggestive of an Anna's Hummingbird (*Calypte anna*) had also been seen at another location in Oxford. Mike Lesan and Fran and Donald Vannoy rushed to Oxford, but were unsuccessful in seeing the possible Anna's. On 20 September Champeny again called Donald Vannoy to report that the possible Anna's was at a feeder at the home of Jack and Norma Dennett in Oxford. This time Fran and Donald Vannoy and Dan Kilby travelled to Oxford, but were told that the bird had left only five minutes before our arrival. We waited until dusk, but the bird did not return.

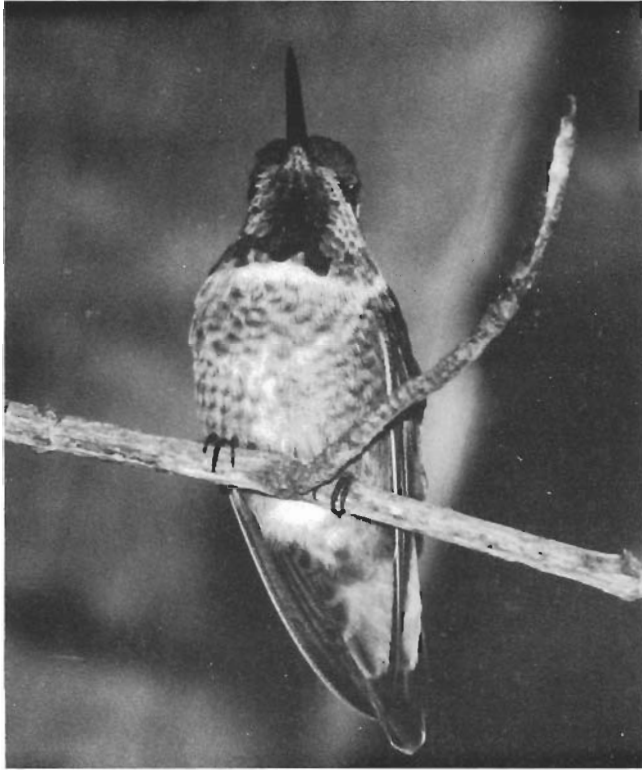


Figure 1. Anna's Hummingbird at Oxford, KS (photograph by Gerald Wiens).

The next morning, 21 September, Dan Kilby, Donald Vannoy, Ralph Wiley, and Pete Janzen returned and along with Wallace Champeny and the Dennetts found a first year male hummingbird of the following description: the gorget was an incomplete metallic rose red triangle below the chin. The outer edges were not fully defined, but a shadow line indicated the edge of the full gorget to come. The forehead had flecks of metallic rose red, irregular at the top and terminating half-way into the crown. There was a metallic rose red area behind the post-ocular white spot. The back was metallic green. The undersides from the throat posteriorly was pale gray with darker sides and with conspicuous white tufts at the sides of the rump. The tail was slightly forked and dark, except for metallic green upper coverts and middle tail feathers. The bill appeared to be shorter than that of the Ruby-throated Hummingbird (*Archilochus colubris*), but the Anna's aggressive behavior never allowed the ruby-throat to remain in the area long enough for a comparison. We concluded that it was indeed an Anna's Hummingbird.

The Anna's Hummingbird was subsequently seen by over 160 birders. It was photographed by Gerald Wiens (see Figure 1), and Jack Dennett had recorded it on video tape as early as 2 September. Norma Dennett believes it arrived in August. During the period of observation at the Dennett's feeder, the hummingbird completed its molt, and was last seen on 23 November 1990.

Donald Vannoy, 2456 Coolidge, Wichita, KS, 67204 and Daniel S. Kilby, 1220 Gold, Wichita, KS, 67203.

KANSAS ORNITHOLOGICAL SOCIETY

Officers for 1990-1991

President	David Siebel 1310 George Ct. #1 Lawrence, KS 66044
Vice-president	David Bryan 9214 W. 82 Terr. Overland Park, KS 66212
Corresponding Secretary	Dwight Platt RR 2, Box 209 Newton, KS 67114
Membership Secretary	Diane Seltman RR 1, Box 36 Nekoma, KS 67559
Treasurer	Rose Fritz 1816 Cypress Ln. Newton, KS 67114
Business Manager	Galen Pittman RR 4, Box 260 Lawrence, KS 66044

Directors

1989 - 1991	Tom Shane 1706 Belmont Garden City, KS 67846
1989 - 1991	John Schukman RR 2, Box 111-37 Leavenworth, KS 66048
1990 - 1992	Joanne Brier 1822 Westwood Topeka, KS 66604
1990 - 1992	Jim Mayhew 1909 Judson Manhattan, KS 66502

Appointed Positions

Librarian	Ruth Fauhl 1923 Ohio St. Lawrence, KS 66046
Editor, The Bulletin	John L. Zimmerman Div. Biology – Ackert Hall Manhattan, KS 66506
Editor, The Newsletter	Don Vannoy 1458 Coolidge Wichita, KS 67204

ISSN 0022-8729