

Kansas Ornithological Society

BULLETIN

PUBLISHED QUARTERLY

Vol. 46

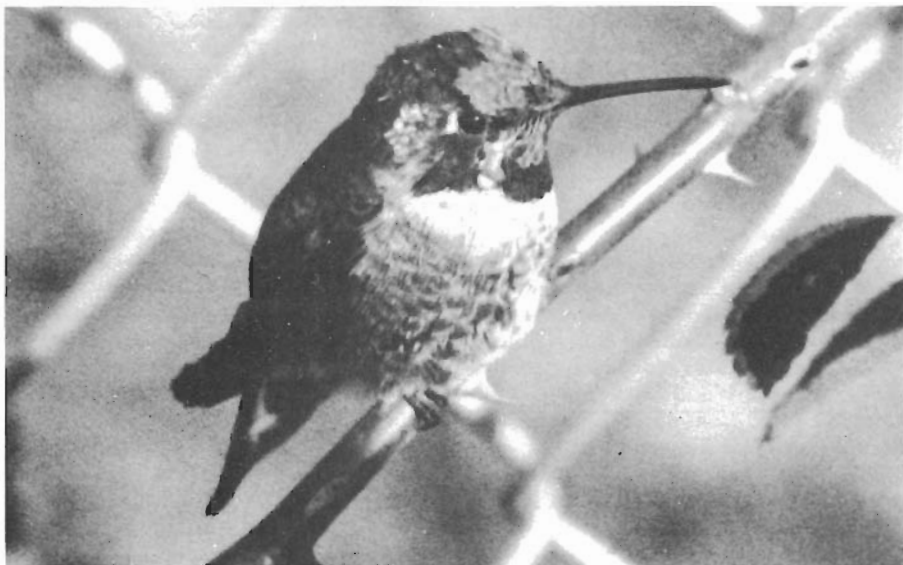
March, 1995

No. 1

THE WINTER BIRD COUNT FOR 1994

Max C. Thompson and Eugene A. Young

The winter bird count for Kansas has reached several milestones this year. The 50 counts conducted this year are an all-time high surpassing last years record of 49. This is a great accomplishment since we did not hear from two counts that reported last year (Byron Walker and Ulysses). However, three new counts, Alma/Lake Wabaunsee (Wabaunsee County), Bonner/Lansing (Wyandotte County) and Slate Creek (Sumner County) were done for the first time. There has been an average of 40 counts per year since 1989. Kansas has recorded 243 species on winter bird counts since the Christmas Bird Counts were first printed in the Kansas Ornithological Society Bulletin. The 1994-95 counts were done in mostly mild weather. The lack of northern finches and the large numbers of waterbirds attest to the mild weather conditions. The mild conditions may also help explain the 670 observers who turned out this year, second only to the record of 671 observers in 1988 (average 567 over last five years). Many counts reported record high numbers of individual species.



Photograph 1. Anna's Hummingbird recorded on Udall-Winfield Count. Photo by Max C. Thompson.

The 156 species recorded this year is second only to the record of 157 set last year (average 152 over five years). One additional species, the Snowy Owl was recorded during count week at Kirwin but not recorded on any count. A Ringed

Turtle Dove seen at Emporia is not included in the total since it is an exotic. Twenty counts recorded over 75 species with Lawrence and Manhattan each having a high of 93 species. Linn County (92 species), Oskaloosa/Perry (92), Emporia (91) and Wichita (90) also recorded over 90 species. Two species were omitted from the species list for insufficient details, the Tennessee Warbler and Broad-winged Hawk. However, we included several species that should be considered only as hypothetical such as the four Thayer's Gull, and one Iceland Gull recorded. Gulls are notoriously difficult to identify in the field and even in the hand, especially those of the Herring-Thayer's complex. The validity of the Thayer's Gull as a full species is even being questioned. There are no records for the Iceland Gull in Kansas and the record is currently being evaluated by the Kansas Bird Records Committee. The Thayer's Gull has not been collected in the state and the only records are a few photographs and several eyewitness accounts. These records should only be considered as hypothetical for the state until documented with a specimen. Three other species were recorded for the first time on winter counts: Red-throated Loon at Kirwin; Anna's Hummingbird in Winfield (photographs), and a Gray Catbird observed in Salina. The Anna's Hummingbird deserves special attention, since it is the first hummingbird to be observed on a winter count in Kansas. Other unusual or rare birds occurring this year included one Western Grebe at Webster, a Black-crowned Night Heron for the second straight year at Wichita, one Black Duck at Oskaloosa/Perry, and a Harris' Hawk at Baldwin. There were six different Red-shouldered Hawks observed, three in Linn County, two in Baxter Springs, and one in Lakin. The Lakin observation is far out of the normal range of the Red-shouldered Hawk and will be submitted to the Kansas Bird Records Committee. John Redmond and Topeka each reported a Turkey Vulture. Topeka has recorded Turkey Vultures in 1949, 1960 and 1976 and during the count week in 1977. Shorebirds of interest included a Greater Yellowlegs along the Arkansas River in Arkansas City, Lesser Yellowlegs at Lawrence, and seven Dunlin recorded at Quivira. A California Gull was reported from Waconda and a Glaucous Gull from Hillsdale were also rare finds. Two Chihuahuan Ravens were seen in Morton County, a Common Yellowthroat at Udall/Winfield, three Le Conte's Sparrows, one from Garden City and two from Linn County, Yellow-headed Blackbirds with one each in Alma/Lake Waubunsee, Salina, and Slate Creek. An Audubon's Warbler was recorded from Bonner/Lansing and may be the first winter record for Kansas.

It was a good year for waterfowl. Almost 290,000 geese were recorded with the Snow Goose slightly outnumbering Canada Goose populations. Linn County reported 100,000 Snow Geese. There were 34 Ross' Geese observed with 23 in Linn County, four at Oskaloosa/Perry, two at Bonner/Lansing, and one each at Lakin, Leavenworth, Quivira, Waconda and Wichita. Dabbling and diving ducks were recorded in good numbers, as well as, a large number of species being observed. Most species were recorded in greater numbers than last year, although a few species like the Wood Duck, Mallard, Blue-winged Teal, Northern Pintail, Common Goldeneye and Common Merganser were below last years totals. Wood Ducks and Blue-winged Teal showed a similar pattern, with both species having recorded over 150 last year and this year each was under 65. Common Mergansers declined for the second straight year with 32,855 being observed (over 70,000 were recorded in 1992). Waconda Lake had the largest number of Common Mergansers, 9,765 (25,400 last year). Thirteen Red-breasted Mergansers were recorded as were nine Greater Scaup (eight in Lawrence and one in Emporia). Northern ducks seemed quite common as indicated by the two White-winged Scoters (Cheyenne Bottoms and Olathe) and 13 Oldsquaw (two at Cedar Bluff, Emporia and Liberal and one each at Wilson, Garden City, Kirwin, Lawrence, Manhattan, Salina and Topeka). Emporia had an impressive 452 Canvasbacks. Ruddy Ducks increased with 60 being seen (57 in 1992 and 20 in 1993).

It was an interesting year for hawks and falcons. While the Bald Eagle, Red-

tailed Hawk, American Kestrel and Prairie Falcon showed increases over last year, the Northern Harrier, Ferruginous Hawk, Rough-legged Hawk and Golden Eagle were down from last year. No goshawks were recorded this year but both the Sharp-shinned Hawk and Cooper's Hawk increased in numbers. There were seven counts that recorded over 50 Northern Harriers: Lawrence had 64 and Udall/Winfield had a high of 83. Red-tailed Hawk numbers increased for the second straight year with 3,565 individuals (average 2,460 from 1989-1994). Harlan's Hawk decreased from 48 in 1993 to 38 this year. Five counts recorded over 200 red-tails with Udall/Winfield having the high of 358 for the second year in a row (256 at Baldwin, 221 in Linn County, 209 at Lawrence, and 205 at Manhattan). Ferruginous Hawks continue a pattern as noted last year, of increasing during odd years and decreasing in even years since 1989. Since 1994 is an even year, populations were 27% lower this year, with 79 being observed. Cimarron had the high for a count with 22.

Like last year, the lack of frozen water allowed many species to remain in the state. For example: there were 22 Common Loons (three in each of last two years); 209 White Pelicans; 417 Double-crested Cormorants; nine Virginia Rails (10 last year); 999 American Coots with 224 seen in Linn County; 107 Killdeer; 29 Common Snipe; 234 Belted Kingfishers; and 54 Marsh Wrens were all reported in high numbers. In addition, the 319 Great Blue Herons is the second highest total recorded (333 is the all-time high recorded in 1988) and they have been averaging 248 per year from 1989-1994. It is only the third time that over 300 Great Blue Herons have been recorded during winter counts and the forty-one counts (82%) that observed them this year is an all-time high.

The amount of effort in owling helps determine the number of owls recorded so it is difficult to compare their populations. However, the 128 Eastern Screech Owls, 103 Barred Owls, and 39 Short-eared Owls was the most recorded for these species from 1991-1994.

Most woodpeckers showed a decrease in numbers over last year with the exception of two species. The Downy Woodpecker increased by six over last year with 1,462 seen and the Pileated Woodpecker increased by eight with 36 recorded breaking the record of 32 observed in 1991. Flickers and Yellow-bellied Sapsucker numbers were considerably lower than last years numbers. Other woodland species like the Black-capped Chickadee (5,299), Northern Cardinal (5,799), Carolina Wren (561) and Tufted Titmouse (1,709) were recorded in greater numbers over last year. The Tufted Titmouse and Northern Cardinal have increased for the third consecutive year. The 488 Carolina Chickadee's is below the average of 572 since 1991.

The Red-breasted Nuthatch was virtually absent from the state with a mere 17 observed compared to the 323 last year. White-breasted Nuthatches were abundant with 893 seen, slightly less than the 933 recorded last year (average 780 from 1989-1994). Golden-crowned Kinglets were also conspicuous by their absence with only 195 individuals (average 418 since 1989). Ruby-crowned Kinglets were impressive again with 44 individuals observed. This is slightly lower than the 52 recorded last year, but almost double the average of 23 since 1989. Eastern Bluebird, Mountain Bluebird, Hermit Thrush, Curve-billed Thrasher, and Brown Thrasher all showed decreases from last years numbers. Northern Mockingbirds increased by nine to 201 from last year and Townsend Solitaire increased by 135% going from 17 to 40 individuals seen. The American Robin population was almost nonexistent with only 2,866 individuals recorded. Mountain Bluebirds went from 1,154 individuals reported in 1993 to only 46 this year, with only 24 in the Red Hills.

Sparrows were more abundant this year. The only exceptions were those rare species that were not recorded this year (Rufous-crowned Sparrow, Golden-crowned Sparrow, Gray-headed Junco, and McCown's Longspur). The Rufous-sided Towhee (198), Field Sparrow (121), Vesper Sparrow (4), Lark Bunting (84), Savannah Sparrow (35), Fox Sparrow (39), Lincoln's Sparrow (31) and White-winged Junco (34) were all recorded in good numbers. Lapland Longspurs (48,571), Dark-eyed

Junco (23,215) and Tree Sparrows (22,988) were the most abundant sparrows.

Eastern Meadowlarks increased for the third year with 2,428 observed (2,222 in 1993 and 2,157 in 1992). Western Meadowlarks with 4,051 individuals was slightly lower than the 4,820 recorded in 1993 but above the average of 3,308 since 1989. There was a spectacular 2.5 million Red-winged Blackbirds recorded at Slate Creek Wetlands/Oxford, all of which came in to roost in cattails (*Typha angustifolia*) in the evening. Purple Finches with 106 individuals is just shy of the 108 average since 1990. House Finches continue to increase with an all-time high of 5,488 surpassing last years record of 4,437 (not 437 as reported in text of last years bulletin). Pine Siskins were up from last year with 1,133 recorded, mostly from northern counts. Other northern finches were noticeable absent from the counts this year. The American Goldfinch after averaging 5,152 individuals over the last 5 years increased to 9,377 individuals this year. *Southwestern College, Department of Biology, Winfield, KS 67156.*

Alma-Lake Wabaunsee. 38° 56'N 96° 17'W (new count). Center 2.5 miles north, 0.5 miles west of the junction of K-4 and K-99 highways about six miles south of Alma. The count area lies entirely within Wabaunsee County. 24 December 1994, 7:30 a.m. to 6:35 p.m., 18° to 48°F. Wind SE 0-8 mph. Still water partly open, moving water partly open, a.m. foggy, p.m. cloudy. One observer. Total party-hours 9.75 (5 on foot, 4.75 by car) plus 1.25 hours owling. Total party-miles 85 (5 on foot, 80 by car) plus 23 owling. Total 60 species; 2,347 individuals.

Seen in count circle count week but not count day: Green-winged Teal, Common Merganser, Sharp-shinned Hawk, American Coot, Ring-billed Gull, Barred Owl, Loggerhead Shrike, White-throated Sparrow, Western Meadowlark, Pine Siskin.

Dan LaShelle (compiler—238 SW Gage Blvd. #1208, Topeka, KS 66606-2059).

Arkansas City. 37° 02'N, 97° 02'W. Center as described in 1978. 26 December 1994, 7:30 a.m. to 5:00 p.m., 30° to 55°F. Wind SW 5 mph. Still water open, moving water open, a.m. clear, p.m. clear. Fifteen observers in 5-6 parties. Total party-hours 43.5 (18 on foot, 25.5 by car) plus 1.5 hours owling. Total party-miles 248 (17 on foot, 231 by car) plus 38 miles owling. Total 75 species; 38,063 individuals.

Wallace Champeny, Jack Dennett, Norma Dennett, Beverly DuGay, Rick Goodrick, Chet Gresham, Rex Herndon, Pete Janzen, Dan Kilby, Mike Lesan, David Seibel, Eddie Stegall, Savilla Stegall, Donald Vannoy (compiler—2458 Coolidge St., Wichita, KS 67204-5616), Gene Young.

Baldwin. 38° 47'N, 95° 16'W. Center as described in 1986. 18 December 1994, 6 a.m. to 5 p.m., 23° to 53°F. Wind SE 5-10 mph. Still water partly frozen, moving water open, a.m. clear, p.m. clear. Twenty-nine observers in 10 parties. Total party-hours 69.75 (14.25 on foot, 55.5 by car) plus three hours owling, four at feeders. Total party-miles 494 (14 on foot, 480 by car) plus 37 miles owling. Total 78 species; and 13,362 individuals. Seen in count circle count week but not count day: Wild Turkey, Pine Siskin.

Gennie Agin, Richard Bean, Jan Boyd, Roger Boyd (compiler—Biology Department, P. O. Box 65, Baker University, Baldwin City, KS 66606), Curtis Brobisky, David Bryan, Tom Church, Calvin Cink, Chris Cink, Kendall Cooper, Mike Cooper, Matt Kamp, Carolyn Irish, Kellie Irish, Tom Irish, Catie Jensen, Katharine Kelley, Mike Laird, David McDermott, Jeannie McDermott, Lois Peckham, Martin Pressgrove, Amy Rose, David Rose, Eileen Ullrich, Michael Whited, Joyce Wolf, Ron Wolf, Fred Young.

Baxter Springs. 37° 10'N 94° 16'W. Center as described 1992 at Riverton. 26 December 1994, 7:15 a.m. to 5:30 p.m., 25°-57°F. Wind S 0-5 mph. Still water open, moving water open, a.m. clear, p.m. clear. One observer. Total party-hours 10.25 (9 on foot, 1.25 by car). Total party-miles 52 (5 on foot, 47 by car). Total 59 species; 14,852 individuals.

James Rising (compiler—Dept. Zoology, University of Toronto, Toronto, Ontario, Canada M5S 1A1).

Black Wolf/NW Ellsworth County. 38° 45'N, 98° 22'W. Center as described 1993. 8 January 1995, 7:15-6:15 p.m., 21°-33°F. Wind NE 10 mph a.m., ESE 5-10 mph p.m. Snow 4 inches. Still water frozen, moving water partly frozen, a.m. clear, p.m. clear. Seven observers in 5 parties, plus 1 at feeders. Total party-hours 11.5 (1.5 on foot, 10 by car), plus 1 hour owling. Total party-miles 170.5 (1.5 on foot, 169 by car). Seen in count circle count week but not count day: Canada Goose. Total 51 species; 2,924 individuals.

Fred Abercrombie, Lila Abercrombie, David Klema, Carolyn Nondorf, Beth Ptacek, Larry Ptacek, Ellen Rader, Mike Rader (compiler—P.O. Box 395, Wilson, KS 67490).

Bonner Springs/Lansing. 39° 11'N 94° 54'W (new count). Center at a point on highway K-7, 1.5 miles south of the northwest corner of Wyandotte County; to include Bonner Springs, Wyandotte Co. Lake on the east, Stranger Creek on the west, Basehor, and Lansing. 1 January 1995, 7:00 a.m. to 5:30 p.m., 10°-23°F. Wind W 5-10 mph, snow 2 inches. Still water partly open, moving water partly frozen, a.m. clear, p.m. clear. Nine observers in 4 parties. Total party-hours 34.75 (6 on foot, 28.75 by car) plus .75 hours owling. Total party-miles 326.5 (6.5 on foot, 320 by car) plus .5 miles owling. Total 79 species; 17,420 individuals.

Stephen Addinall, Elaine Corder, Mark Corder, Chris Hobbs, Mick McHugh, Galen Pittman (compiler—12042 258th St., Lawrence, KS 66044), John Schukman, Mike Stewart, Phil Wedge.

Camp Naish. 39° 04'N 94° 54'W. Center as described in 1994. 23 December 1994, 6:15 a.m. to 5:00 p.m., 28° to 42°F. Wind NW 6 mph. Still water open, moving water open, a.m. foggy, p.m. partly cloudy. Nine observers in 2 parties. Total party-hours 18 (16 on foot, 2 by car). Total party-miles 16 (12 on foot, 4 by car). Total 39 species; 821 individuals.

Raghu Chundawat, Kevin Colson, Shelby Loper, Jacob Musick, Alexis Powell, Jim Roth, Stan Roth (compiler—Lawrence High School, 1901 Louisiana St., Lawrence, KS. 66046-2938), Art Swalwell, Ken Takasagawa.

Cedar Bluff. 38° 45'N 99° 46'W. Center as described in 1985. 26 December 1994; 7:30 a.m. to 4:30 p.m.; 30° to 60°F. Wind S 5-20 mph. Still water open; moving water open; a.m. clear, p.m. clear. Eight observers in 3 parties. Total party-hours 21 (7 on foot, 14 by car). Total party-miles 247 (6 on foot, 241 by car). Total 64 species; 4,485 individuals.

Bradli Millington, Jonni Millington, Mike Rader, John Schukman, Scott Seltman (compiler—R R 1, Box 36, Nekoma, KS 67559), Christopher Shane, Sara Shane, Tom Shane.

Cheyenne Bottoms Wildlife Area. 38° 26'N 98° 35'W to 38° 31'N 98° 44'W to include the Nature Conservancy Reserve (not circular). 19 December 1994; 8:30 a.m. to 12:30 p.m.; 30° to 40°F. Wind SW 10-20 mph. Still water partly frozen; a.m. clear, p.m. clear. Six observers in 3 parties plus 1 at feeders. Total party-hours 12 (4.75 on foot, 7.25 by car) plus .5 hour at feeders. Total party-miles 66.25 (5.25 on foot, 61 by car). Total 42 species; 3,021 individuals. Seen in count circle count week but not count day: Pied-billed Grebe, Great Blue Heron, Ring-necked Duck, American Widgeon, Loggerhead Shrike, N. Bobwhite, Marsh Wren.

Gene Bahr, Karl Grover, Helen Hands (compiler—Cheyenne Bottoms Wildlife Area, Rt. 3, Box 301, Great Bend, KS 67503), Larry Hesed, Jerry Ney, Gene Schneewis.

Cimarron National Grassland. 37° 07'N 101° 52'W. Center as described 1973. 3 January 1995; 8 a.m. to 6 p.m.; 28° to 42°F. Wind SW 5-10 mph. Still water partly open; a.m. clear, p.m. partly cloudy. Ten observers in 4 parties. Total party-hours 32 (10 on foot, 22 by car). Total party-miles 294 (15 on foot, 279 by car). Total 58 species; 4,108 individuals. Seen in count circle count week but not count day: Mallard.

H. Gregory, S. Gregory, D. LaShelle, S. Patti (compiler—552 W. Belden, Chicago, IL 60614), M. Rader, J. Rakestraw, La. Smith, Le. Smith, R. Smith, M. Thompson.

Dodge City. 37° 46'N 99° 58'W. Center as described 1992. 17 December 1994; 8 a.m. to 5:05 p.m.; 28°-55°F. Wind 5-10 mph. Still water partly frozen; moving water open; a.m. clear, p.m. clear. Twenty-two observers in 6-4 parties, plus 3 at feeders. Total party-hours 41 (5.4 on foot, 35.2 by car) plus 5 hours at feeders. Total party-miles 364.9 (5 on foot, 359.9 by car). Total 40 species; 5615 individuals. Seen in count circle count week but not count day: Townsend Solitaire, Yellow-headed Blackbird, Bald Eagle.

Louis Bryson, George Cole, Margaret Cole, Joyce Davis, Edna Donaghey, Leonard Donaghey, Dick Dryden, Pat Dryden, Steve Durant, Joleen Fromm (compiler—2402 5th Ave., Dodge City, KS 67801), Etta Havercroft, Lois Hunter, Wallace Hunter, Lorene Kulbiski, Jonni Millington, John Phillips, Matthew Phillips, Tessa Phillips, Kay Rose, Jane Ross, Douglas Spain, Frances Spain, Shirley Vieux, Julie White, Judi Young.

El Dorado Lake. 37° 51'N 96° 52'W. Center as described 1992. 20 December 1994; 7:30 a.m. to 4:30 p.m.; 30°-40°F. Wind N 5-15 mph. Still water open, moving water open; a.m. cloudy, p.m. cloudy. Eight observers in 3 parties. Total party-hours 23 (6 on foot, 17 by car). Total party-miles 285 (7 on foot, 278 by car). Total 61 species; 31,230 individuals.

Dwayne Anderson, Rick Goodrick, Bill Langley (compiler—2425 Gentry Ln., El Dorado, KS 67042), Ron Marteney, Jean Roark, Miriam Roark, Gary Straley, Don Vannoy.

Emporia. 38° 27'N 96° 05'W. Center as described 1985. 18 December 1994; 7:00 a.m. to 6:00 p.m.; 49°F. Wind SW 0-9 mph. Still water open, moving water open; a.m. clear, p.m. clear. Nineteen observers in 8 parties. Total party-hours 53 (12 on foot, 41 by car) plus 9 by canoe. Total party-miles 329 (14 on foot, 315 by car) plus 10 by canoe. Total 91 species; 29,292 individuals. Seen in count circle count week but not count day: Hooded Merganser, Long-eared Owl, Rufous-sided Towhee.

Brent Brock, William Browning, Patty Delmott, Laura Dodge, Roger Ferguson, Sherry Ferguson, Sylvia Flott, Hugh Hanson, Thelma Hanson, Jerry Horak, Jay Jeffrey, Brian Kuehn, Marvin Kuehn, Paul McKnab, Drake Miller, Jean Schulenberg (compiler—Route 2, Box 36, Admire, KS 66830), Marvin Schwillig, Dena Tabor, Kathleen Tabor.

Garden City. 37° 55'N 100° 47'W. Center as described 1992. 7 January 1995; 7:00 a.m. to 6:00 p.m.; 2°-38°F. Wind 14 mph; snow 2 inches. Still water frozen; moving water partly open; a.m. clear, p.m. clear. Seventeen observers in 8 parties, plus 2 at feeders. Total party-hours 40.5 (12 on foot, 28.5 by car) plus 15.5 hours at feeders. Total party-miles 241.25 (14 by foot, 227.25 by car). Total 66 species; 18,869 individuals.

Caverly Baffa, Dan Baffa, Betty Bryant, Hazel Bryant, Jeff Bullock, Barbara Campbell, Ron Jameson, Ross Jameson, Virginia Long, Art Nonhof, Debra Nusz, Marie Osterbuhr (compiler—1103 Gillespie Place, Garden City, KS 67846), Betty Rich, Leonard Rich, Laurie Ryland, Emaline Scott, Sara Shane, Tom Shane, Dennis Sharp.

Halstead-Newton. 38° 04'N 97° 28'W. Center as described 1972. 17 December 1994; 7:00 a.m. to 5:40 p.m.; 30°-55°F. Wind S 0-5 mph. Still water open; moving water open; a.m. clear, p.m. clear. Nineteen observers in 6 parties. Total party-hours 52 (30.25 on foot, 21.75 by car). Total party-miles 305 (26 on foot, 279 by car). Total 59 species; 11,229 individuals.

Richmond Aarstad, Laura Cossey, Marion Deckert, Bob Dester, Bev DuGay, Ray Franz, Gregg Friesen, Darwin Gingerich, Lorna Harder, Paul Jantzen, Dwight Platt (compiler—702 NE 24th St., Newton, KS 67114), Dave Ranney, Don Rogers, Chad Runco, Carolyn Schwab, Joe Soukup, Doug Storer, Jim Storer, Carl Thiesen, John Torline, Nada Voth.

Hays. 38° 47'N 99° 23'W. Center as described 1987. 17 December 1994; 7:30 a.m. to 5:30 p.m.; 30°-53°F. Wind NW 0-5 mph; snow trace. Still water frozen, moving water partly frozen; a.m. clear, p.m. clear. Six observers in 2 parties. Total party-hours 15 (5 on foot, 10 by car).

Total party-miles 161 (10 on foot, 151 by car). Total 46 species; 5693 individuals. Seen in count circle count week but not count day: American Robin.

Earl Carlson, Donna Cooper (compiler—2906 Walnut, Hays, KS 67601), Susan Myers, Phil Ryan, Jim Schmidt, Kelly Strecker.

Hillsdale Lake. 38° 37'N 94° 52'W. Center as described 1991. 7 January 1995, [no time, temperature or wind data given]. Snow 1.5 inches. Still water partly open; moving water partly frozen; a.m. partly foggy, light snow, p.m. clear. Eight observers in 3 parties. Total party-hours 51 (1 by foot, 50 by car). Total party-miles 185 (1 on foot, 184 by car). Total 60 species; 5,176 individuals.

Chuck Atwater, Terry Atwater, Jim Bell (U. S. Army Corps of Engineers/Hillsdale Lake, 26000 W. 255th, Paola, KS 66071), Robert Hansen, Cathy Hansen, Mike Laird, Isabel Rohrer, Art Swalwell.

John Redmond Reservoir. 38° 16'N 95° 49'W. Center as described 1993. 17 December 1994; 6 a.m. to 5:30 p.m.; 24°-55°F. Wind 3-5 mph. Still water open, moving water open; a.m. clear, p.m. clear. Nine observers in 5 parties, plus 1 at feeders. Total party-hours 36.5 (14.5 on foot, 17 by car), plus 1 hour at feeders, 1 hour owling. Total party-miles 158.5 (13 on foot, 147 by car), plus 2 miles owling. Total 77 species; 44,911 individuals. Seen in count circle count week but not count day: Sharp-shinned Hawk, Rusty Blackbird, Gr. White-fronted Geese.

Bob Culbertson, Shannon Fennel, Gerald Horak, James Minnerath (compiler—Flint Hills National Wildlife Refuge, P. O. Box 128, Hartford, KS 66854), Mike Paradise, Marty Ramirez, Francis Ramirez, Art Swalwell, Dan Williamson.

Junction City. 39° 00'N 96° 53'W. Center as described 1992. 26 December 1994; 5:30 a.m. to 6:30 p.m.; 29°-57°F. Wind SSW 0-24 mph. Still water open, moving water open; a.m. clear, p.m. clear. Eleven observers in 6 parties. Total party-hours 38 (12 on foot, 26 by car), plus one hour owling. Total party-miles 296.6 (20 on foot, 276.6 by car), plus 25 miles owling. Total 79 species; 12,773 individuals. Seen in count circle count week but not count day: Red-breasted Nuthatch.

Joanne Brier, Stacey Cooke, Don Hettinger, Shirley Hettinger, Johnnie Johnson, Sarah Merrill, Chuck Otte (compiler—613 Tamerisk, Junction City, KS 66441), Gerald Reeck, Chris Smith, Bob Waters, Steven Waters.

Kirwin Reservoir. 39° 42'N 99° 08'W. Center as described 1994. 21 December 1994; 7:15 a.m. to 5:45 p.m.; 33°-37°F. Wind NW-SE 20-5 mph. Still water partly frozen, moving water open; a.m. cloudy, foggy; p.m. partly cloudy. Two observers in 2 parties, plus 4 at feeders. Total party-hours 12 (2 on foot, 10 by car), plus 4 hours at feeders. Total party-miles 158 (2 on foot, 156 by car). Total 67 species; 49,563 individuals. Seen in count circle count week but not count day: Northern Pintail.

Brad Johnson, Mike Rader (compiler—P. O. Box 395, Wilson, KS 67490), Bruce Schoonovor, Scott Saltman, Diane Stockman, Floyd Truetken.

Lakin. 37° 95'N 101°15'W. Center as described 1994. 17 December 1994; 7:50 a.m. to 6:00 p.m.; 25°-56°F. Wind calm. Still water partly open, moving water open; a.m. partly cloudy, pm. clear. Ten observers in 4 parties. Total party-hours 24.5 (6 by foot, 18.5 by car). Total party-miles 194 (4 on foot, 190 by car). Total 67 species; 26094 individuals.

Barbara Campbell, Bob Campbell, Art Nonhof, Debra Nusz, Marie Osterbuhr, Betty Rich, Leonard Rich (compiler—1107 E. Johnson, Garden City, KS 67846), Sara Shane, Tom Shane.

Lawrence. 39° 00'N 95° 18'W. Center as described 1992. 17 December 1994; 6:15 a.m. to 6:00 p.m.; 34°-56°F. Wind NW 10 mph. Still water partly frozen, moving water open; a.m. clear, p.m. clear. Forty observers in 12 parties, plus 2 at feed-

ers. Total party-hours 108.5 (38.5 on foot, 70 by car), plus 4 hours at feeders, 6 hour owling. Total party-miles 569.5 (46.5 on foot, 523 by car), plus 39 miles owling. Total 93 species; 28,733 individuals.

Stephen Addinall, Gennie Agin, Bob Antonio, Judy Bailey, Catherine Bird, Roger Boyd, Bill Busby, Mary Butterbrodt, David Chaffee, Pam Chaffee, Cal Cink, Jan Conrod, Mark Corder, Shirley Dinkel, Ruth Faulh, Patty Field, Lin Frederickson, David Herrin, Chris Hobbs, Jennifer Jones, Mick McHugh, Lloyd Moore, Caleb Morse, Galen Pittman (compiler—12042 250th St., Lawrence, KS 66044), Alexis Powell, Stan Roth, Richard Rucker, David Seibel, Cynthia Shaw, Ed Shaw, Liz Smith, Garold Sneegas, Kathleen Stangle, Mike Stewart, Trudy Walker, Margaret Wedge, Phil Wedge, Pam Wilson, Joyce Wolf, Ron Wolf.

Leavenworth-Atchison. 39° 23'N 95°00'W. Center as described 1992. 31 December 1994; 7:00 a.m. to 5:00 p.m.; 27°-34°F. Wind N 10 mph. Snow 3 inches. Still water open, moving water open; a.m. cloudy, light snow; p.m. cloudy, light snow. Eleven observers in 4 parties, plus 2 at feeders. Total party-hours 33 (3 on foot, 30 by car), plus 4 hours at feeders, 1 hour owling. Total party-miles 330 (6 on foot, 324 by car), plus 4 miles owling. Total 61 species; 19,824 individuals.

Chuck Allen, Ginny Allen, Brian Barber, Byron Berger, Mike Laird, Dave McDermott, Mick McHugh, Galen Pittman, Richard Rucker, John Schukman (compiler—14207 Robin Road, Leavenworth, KS 66048), Patricia Stanley, Mike Stewart, Mary Waisanen.

Liberal-Seward Co. 37° 07'N 100° 50'W. Center as described 1992. 1 January 1995; 8 a.m. to 5 p.m.; 28°-42°F. Wind SW 5-10 mph. Still water open, moving water open; a.m. clear, p.m. clear. Five observers in 3 parties. Total party-hours 17.5 (2.5 on foot, 15 by car), plus 6 hours at feeders. Total party-miles 309 (2.5 on foot, 306.5 by car). Total 75 species; 86,250 individuals.

R. Kenney, D. LaShelle, S. Patti (compiler—552 W. Belden, Chicago, IL 60614), M. Rader, T. Shane, M. Thompson.

Linn County. 38° 17'N 94° 45'W. Center as described 1982. 26 December 1994; 6 a.m. to 5:45 p.m.; 27°-55°F. Wind SW 0-5 mph. Still water partly frozen, moving water open; a.m. foggy, p.m. clear. Nineteen observers in 8 parties. Total party-hours 70 (12 on foot, 58 by car), plus 2 hours owling. Total party-miles 533 (14 on foot, 519 by car), plus 10 miles owling. Total 92 species; 128,590 individuals.

Mike Beck, Jan Boy, Roger Boyd (compiler—Biology Dept., P. O. Box 65, Baker University, Baldwin City, KS 66006), Curtis Brobisky, Steve Crawford, Bud Eyerly, Sue Eyerly, Bob Fischer, Chris Hobbs, Mike Laird, Dan LaShelle, Mick McHugh, Galen Pittman, Barbara Pressgrove, Martin Pressgrove, Isabelle Roehr, Cindy Smith, Phil Wedge, Fred Young.

Manhattan. 39° 11'N 96° 34'W. Center as described 1993. 17 December 1994; 7:00 a.m. to 5:30 p.m.; 30°-48°F. Wind NW 0-15 mph. Still water open, moving water open; a.m. clear, p.m. clear. Ninety-six observers in 18 parties. Total party-hours 177 (122.5 on foot, 52.5 by car), plus one hour owling, 2 hours by canoe. Total party-miles 689.5 (115.5 on foot, 571 by car), plus 10 miles owling, 3 miles by canoe. Total 93 species; 31,687 individuals. Seen in count circle count week but not count day: Red-breasted Nuthatch.

David Allison, Cheryl Balaun, Carla Bishop, Bob Bowden, Brent Brock, Doris Burnett, Becky Burton, Charles Bussing, Ted Cable, Ann Carter, Floyd Catchpole, John Cavitt, Jeremy Corn, Wayne Corn, Jack Culley, Beth Deger, Michael Donnelly, Gene Donovan, Brad Elder, Michelle Evans, Laura A. Fatimi, Fred Freeman, Pat, Freeman, Rosalind Gorton, Marion Gray, Leann Jeffrey, Lowell Hohnsn, Duane Kerr, Keith Klein, Jim McNabb, Heidi Michaels, Fred Mogul, Bob Mohr, Ed Olson, Jack, Peter, Sally, and Susan Oviatt, Thad Pittenger, Diane Post, Bill Pursley, Gary Radke, Jerry, Matt, and Stephanie Reeck, Amy, Dave, and Ellen Rintoul, Bill Rogers, Abbie Siddall, Amy Simmons, Chris Smith, Guy Smith, Madonna Stallmann, Margy Stewart, Janet and Jim Throne, Marilyn Tilghman, Spencer Tomb, John, Matt, and Sam Tomich, Dana, Daniel, Harvard, Michael, and Sarah Townsend, Jim Urban,

Tom Van Slyke, Faisal and Jeanne Pierre Vuillomenet, Michael Walter, Paul Weidhass, Ruth Welti, Valery White, Wildfire, Van Withee, Pat, and Tami Yeager, Ron Young, Janice and John Zimmerman (compiler—Division of Biology, Ackert Hall, Kansas State University, Manhattan, KS 66506).

Meade County. 37° 15'N 100° 20'W. Center as described 1994. 30 December 1994; 7:00 a.m. to 6:00 p.m.; 35°F. Wind calm. Still water open, moving water open; a.m. foggy, p.m. foggy. Four observers in 2 parties, plus 2 at feeders. Total party-hours 15 (8 on foot, 7 by car), plus 6 hours at feeders. Total party-miles 105 (6 on foot, 99 by car). Total 45 species; 4,973 individuals. Seen in count circle count week but not count day: Blue Jay, Common Merganser, Bufflehead, Common Grackle, Golden Eagle, Sandhill Crane, Harlan's Hawk.

Audrey Flowers, Thomas Flowers (compiler—P. O. Box 87, Meade, KS 67864-0087), Dinah Mellard, Ron Mellard.

Olathe. 38° 55'N 94° 51'W. Center as described 1986. 1 January 1995; 7:30 a.m. to 5:00 p.m.; 6°-25°F. Wind 0-15 mph. Snow 1 inch. Still water partly frozen, moving water open; a.m. partly cloudy, p.m. partly cloudy. Six observers in 3 parties, plus 12 at feeders. Total party-hours 28 (8 on foot, 20 by car), plus 3 hours owling. Total party-miles 230 (6 miles on foot, 224 by car), plus 15 miles owling. Total 70 species; 10,144 individuals. Seen in count circle count week but not count day: Red-breasted Nuthatch.

Byron Berger, Jan Boyd, Roger Boyd, Steve Crawford (compiler—529 N. Curtis, Olathe, KS 66061), Dave Fischer, Mike Reed, Walter Ross, Carol Surman, Jim Surman, Art Swalwell, Larry Williams.

Old Garfield County. 38° 07'N 100° 27'W. Center as described 1993. 18 December 1994; 7:30 a.m. to 4:00 p.m.; 24°-56°F. Wind SSW 15 mph. Still water partly frozen, moving water open; a.m. clear, p.m. clear. Eight observers in 3 parties. Total party-hours 16.5 (2 on foot, 14.5 by car). Total party-miles 179 (3 on foot, 176 by car). Total 41 species; 3,686 individuals.

Barbara Campbell (compiler—709 W. Maple, Garden City, KS 67846), Bob Campbell, Art Nonhof, Debra Nusz, Marie Osterbuhr, Betty Rich, Leonard Rich, Tom Shane.

Olzburg. 39° 25'N 96° 39'W. Center as described 1993. 14 December 1994; 7:00 a.m. to 6:00 p.m.; 32°-40°F. Wind S-SE 20-25 mph. Still water open, moving water open; a.m. partly cloudy, p.m. cloudy, light rain. Twelve observers in 5 parties plus two at feeders. Total party-hours 50.7 (20.7 on foot, 30 by car). Total party-miles 386 (24 on foot, 362 by car). Total 68 species; 9,092 individuals.

Bev DuGay, Clyde Ferguson, Jean Gaddis, Gary Jeffrey, Jim Mayhew, Tanner Mayhew, Gary Radke, Gerry Reeck, David Rintoul (compiler—Biology Division, Ackert Hall, Kansas State University, Manhattan, KS 66506-4901), Chris Smith, Guy Smith, John Zimmerman.

Oskaloosa/Perry Lake. 39° 12'N 95° 24'W. Center as described 1994. 18 December 1994; 6:30 a.m. to 5:15 p.m.; 27°-46°F. Wind SW 0-7 mph. Still water open, moving water open; a.m. clear; p.m. partly cloudy. Twenty observers in 7 parties. Total party-hours 62 (18 on foot, 44 by car), plus 3.5 hours owling. Total party-miles 359 (14 on foot, 345 by car), plus 20 miles owling.

Total 92 species; 13,390 individuals. Seen in count circle count week but not count day: Lesser Scaup.

Cynthia Abbott, Stephen Adoinall, Judy Bailey, Joanne Brier, Shirley Dinkel, Bob Fisher, Nate Folland, Patsy Hodges, Jennifer Jones, Glen Koontz, Angel Kwolek-Folland, Mick McHugh, Galen Pittman, Marie Plinsky, Richard Rucker (compiler—121 E. 17th, Lawrence, KS 66044-4233), John Schukman, Roseanne Smith, Mike Stewart, Phil Wedge, Andy Wiese.

Pomona Lake. 38° 41'N 95° 41'W. Center as described 1993. 31 December 1994; 7:30 a.m. to 5:00 p.m.; 35°-12°F. Wind NE 5-15 mph. Snow 2 inches. Still water open, moving water open; a.m. cloudy, snow; p.m. cloudy, heavy snow. Seven observers in 3 parties. Total party-hours 22.5 (4.5 on foot, 18 by car), plus 1 hour

owling. Total party-miles 147 (5 on foot, 142 by car), plus 10 miles owling. Total 52 species; 2,357 individuals.

Mary Allen, Joanne Brier, Bob Culbertson (compiler—P. O. Box 582, New Strawn, KS 66839-0582), Glen Koontz, Mary Masters, Dawn Sharp, Dan Williamson.

Quivira National Wildlife Refuge. 38° 09'N 98° 29'W. Center as described 1972. 19 December 1994; 7:30 a.m. to 5:00 p.m.; 45°F. Wind S-SW 5-10 mph. Still water open, moving water open; a.m. clear, p.m. clear. Twelve observers in 3 parties. Total party-hours 24.5 (7 on foot, 17.5 by car). Total party-miles 244 (5 on foot, 239 by car). Total 79 species; 62,426 individuals. Seen in count circle count week but not count day: Trumpeter Swan.

Wallace Champeny, Gregg Friesen, Rick Goodrick, Dan Kilby, Michael Lesan, Mike Rader, John Rakestraw, Dave Rintoul, Scott Seltman, Donald Vannoy, Marcelee Webb, John Zimmerman, Briedi Zinn (compiler—Quivira National Wildlife Refuge, R. R. 3, Box 48A, Stafford, KS 67578).

Red Hills. 37° 07'N 98° 42'W. New center at 5 miles west and 3 miles south of Medicine Lodge, KS. 1 January 1995; 8:00 a.m. to 4:00 p.m.; 15°-30°F. Wind 5-15 mph. Snow 2 inches. Still water partly open, moving water partly open; a.m. clear, p.m. clear. Eight observers in 2 parties. Total party-hours 15 (13 on foot, 2 by car). Total party-miles 155 (151 on foot, 4 by car). Total 50 species; 2559 individuals.

Wally Champeny, Chet Gresham, Pete Janzen (compiler—3137 Masiot, Wichita, KS 67204), Dan Kilby, Mike Lesan, Jim Nickel, John Northrup, Kim Vornauf.

Salina. 38° 50'N 97° 38'W. Center as described 1993. 17 December 1994; 7:30 a.m. to 5:00 p.m.; 30°-55°F. Wind NW 5 mph. Still water partly open, moving water open; a.m. clear, p.m. clear. Seventeen observers in 4 parties, plus 4 at feeders. Total party-hours 32.25 (15.25 on foot, 17 by car), plus 6.5 hours at feeders. Total party-miles 286.75 (12.75 on foot, 274 by car). Total 66 species; 5,055 individuals.

Clara Bruha, David and Nancy Clark, Don Denison, David, Kevin and Lisa Haight, Harold Lear (compiler—612 Max Ave., Salina, KS 67401), Virginia Lear, Monica Schneider, Charles and Ivy Marsh, Shannon Rayl, Gordon Reist, Marge and Ray Streckfus, Judy Zanardi.

Sawyer. 37° 32'N 98° 41'W. Center as described 1993. 17 December 1994; 8:30 a.m. to 6:00 p.m.; 35°-50°F. Wind N 3-5 mph. Still water open, moving water open; a.m. partly cloudy, p.m. clear. Sixteen observers in 4 parties. Total party-hours 27.75 (18.5 on foot, 9.25 by car). Total party-miles 156 (10 on foot, 146 by car). Total 64 species; 4,833 individuals. Seen in count circle count week but not count day: Sharp-shinned Hawk.

Kaitlin and Ken Brunson, Dana Eastes, Bob and Joyce Hartmann, Bill Hlavachick, Aubrey, Mark, and Stacey Kumberg, Linda Loomis, Carol Mammoliti, Zack Poland, Kelsey Polok, Jane Queal, Byron Walker, Bob Wood (compiler—502 Commodore, Pratt, KS 67124).

Scott Lake. 38° 35'N 100° 56'W. Center as described 1993. 29 December 1994; 7:45 a.m. to 4:30 p.m.; 33°-37°F. Wind S 15 mph. Still water open, moving water open; a.m. foggy, p.m. foggy. Fifteen observers in 5-4 parties, plus 4 at feeders. Total party-hours 34 (10.5 on foot, 23.5 by car), plus 9 hours at feeders. Total party-miles 263.5 (7.5 on foot, 256 by car). Total 54 species; 7,946 individuals. Seen in count circle count week but not count day: Snow Goose, Ring-necked Duck.

Betty Bryant, Hazel Bryant, Bev DuGay, Greg, Loretta, Lynn, and Tiffany McClure, Art Nonhof, Edith and Everitt Norman, Marie Osterbuhr, Sebastian Patti, Betty and Leonard Rich, Scott Seltman, Sara Shane, Tom Shane (compiler—1706 Belmont, Garden City, KS 67846), Kay Sims, Sally Whitson.

Slate Creek Wetlands/Oxford (new count). 37° 15'N 97° 15'W. Center 2 miles south, 4.5 miles west Oxford, Sumner Co., KS. 22 December 1994; 8:00 a.m. to 5:30 p.m.; 34°-49°F. Wind N 10 mph. Still water open, moving water open; a.m. partly cloudy, foggy; mid-day sunny; p.m. partly cloudy, foggy. Six observers in 3

parties. Total party-hours 46 (7 on foot, 39 by car), plus 2.5 hours owling. Total party-miles 176.5 (6.5 on foot, 170 by car), plus 45 miles owling. Total 82 species; 2,513,237 individuals. Seen in count circle count week but not count day: Northern Bobwhite, White-throated Sparrow, Golden-crowned Kinglet.

Wallace Champeny, Jack and Norma Dennett, Max Thompson, Gerald Wiens, Gene Young (compiler—1707 N. 7th, Arkansas City, KS 67005).

Southeast Kansas Mined Land. 37° 14'N 94° 58'W. Center as described 1994. 1 January 1995; 7:30 a.m. to 4:30 p.m.; 32°F. Wind N 5-10 mph. Still water open, moving water open; a.m. clear, p.m. clear. Eight observers in 5 parties. Total party-hours 36 (4.25 on foot, 31.75 by car). Total party-miles 236 (4.5 on foot, 231.5 by car). Total 61 species; 21,539 individuals.

Ray Benner, Mavis Benner, Cindy Ford, Steven Ford (compiler—Biology Department, Pittsburg State Univ., Pittsburg, KS 66762), Lawrence Herbert, Elizabeth Mangile, Robert Mangile, Paul Milks.

Syracuse. 38° 00'N 101° 52'W. Center as described 1994. 8 January 1995; 8:00 a.m. to 4:15 p.m.; 23°-55°F. Wind S 0-5 mph. Still water partly frozen, moving water open; a.m. partly cloudy, p.m. clear. Three observers in 2 parties. Total party-hours 8.25 (2.5 on foot, 5.75 by car). Total party-miles 76.50 (2 on foot, 74.50 by car). Total 41 species; 922 individuals.

Art Nonhof (compiler—7560 Lindsay Dr., Holcomb, KS 67851), Tom and Sara Shane.

Topeka. 39° 02'N 95° 40'W. Center as described 1972. 17 December 1994; 7:00 a.m. to 5:00 p.m.; 32°-55°F. Wind N 5-15 mph. Still water open, moving water open, a.m. clear, p.m. clear. Forty-one observers in 11-15 parties, plus 7 at feeders. Total party-hours 104.5 (52.25 on foot, 52.25 by car), plus 21.5 hours at feeders. Total party-miles 500.5 (59 on foot, 441.5 by car). Total 79 species; 23,633 individuals. Seen in count circle count week but not count day: Green-winged Teal, Killdeer.

Cynthia Abbott, Elizabeth Barrett, Virgil Basgall, Maggie Beers, Joanne Brier (compiler—1822 Westwood Dr., Topeka, KS 66604-3280), Jim Brier, Scott Campbell, Becky Drager, Kirk Drager, Bob Foster, John Frey, Dan Gish, Dean Grisell, Gary Haden, Gwen Haegert, Laura Harris, Dorothy Harvey, Phyllis Henney, Patsy Hodges, Peggy Howard, Scotty Johnston, Martin Jones, Benjamin Kinzie, Glen Koontz, Dan Larson, Bob Lawson, Richard Martin, Sarah Merrill, Robert Miller, Susan Miller, Denzil Moyer, Pete North, Janet Paisley, John Pierpont, Alan Pollom, Melody Pollom, Jo Ramberg, Janet Sands, John Schandler, Gayan Stanley, Pat Stein, Donna Vausbinder, Grace White, Heather Wieland, Georgene Wilhelm, Lil Willis, Paul Willis, Wanda Wilson.

Tribune. 38° 27'N 101° 45'W. Center as described 1993. 9 January 1995; 8: a.m. to 5 p.m.; 35°-60°F. Wind calm. Still water partly open; a.m. partly cloudy, p.m. partly cloudy. Two observers in 1 party. Total party-hours 8 (2 on foot, 6 by car). Total party-miles 39 (1 on foot, 38 by car). Total 12 species; 143 individuals.

Luther Keith, Luverne Keith (compiler—P. O. Box 143, Tribune, KS 67879).

Udall-Winfield. 37° 16'N 96° 59'W. Center as described 1972. 18 December 1994; 8:00 a.m. to 5:00 p.m.; 27°-55°F. Wind SW 5 mph. Still water open, moving water open; a.m. clear, p.m. clear. Seventeen observers in 6 parties, plus 1 at feeders. Total party-hours 44.5 (12.5 on foot, 32 by car), plus 8 hours at feeders, 2 hours owling. Total party-miles 424.5 (16.5 on foot, 408 by car), plus 38 miles owling. Total 89 species; 39,901 individuals.

Betty Anderson, Duane Anderson, Fritz Barnard, Terry Barnett, Wallace Champeny, Bev DuGay, Janet Laws, Mike Lesan, Eddy Stegall, Savilla Stegall, Max Thompson (compiler—1729 E. 11th, Winfield, KS. 67156-4007), Don Vannoy, Gerald Wiens, Donna Wilt, Lee Wilt, Robert Wimmer, Eugene Young.

Waconda Lake. 39° 28'N 98° 22'W. Center as described 1994. 17 December 1994; 7:00 a.m. to 5:30 p.m.; 25°-52°F. Wind NW 15-5 mph. Snow 0-1 inch. Still water partly frozen, moving water open; a.m. cloudy, p.m. clear. Three observers in

3 parties. Total party-hours 23.5 (8.5 on foot, 15 by car), plus 1.75 hours owling. Total party-miles 230 (7 on foot, 223 by car), plus 28 miles owling. Total 75 species; 107,209 individuals.

Dan LaShelle, Mike Rader (compiler—Box 395, Wilson, KS. 67490), Scott Seltman.

Wakefield. 39° 13'N 96° 58'W. Center as described 1993. 18 December 1994; 6:30 a.m. to 5:00 p.m.; 24°-49°F. Wind SSE 0-20 mph. Still water partly frozen, moving water open; a.m. clear, p.m. clear. Four observers in 3 parties, plus 1 at feeders. Total party-miles 18 (2.5 on foot, 15.5 by car), plus 2 hours at feeders, 1 hour owling. Total party-miles 179.4 (3 on foot, 176.4 by car), plus 12 miles owling. Total 67 species; 8,938 individuals. Seen in count circle count week but not count day: Bewick's Wren, Winter Wren.

Doris Burnett, Chad Hedinger, Chuck Otte (compiler—613 Tamerisk, Junction City, KS. 66441), Jaye Otte.

Webster Reservoir. 39° 25'N 99° 24'W. Center as described 1994. 22 December 1994; 7:20 a.m. to 5:20 p.m.; 29°-51°F. Wind N 0-10 mph. Still water partly frozen, moving water open; a.m. foggy; p.m. clear. Three observers in 3 parties. Total party-hours 16.5 (5.5 on foot, 11 by car), plus .75 hours owling. Total party-miles 158 (6 on foot, 152 by car), plus 1 mile owling. Total 66 species; 13,139 individuals. Seen in count circle count week but not count day: Ferruginous Hawk.

Mike Rader (compiler—P. O. Box 395, Wilson, KS. 67490), Richard Rucker, Scott Seltman.

Weskan. 38° 57'N 102° 01'W. Center as described in 1993. 10 January 1995; 7:30 a.m. to 4:30 p.m.; 40°-60°F. Wind S 5 mph. Still water open, moving water open; a.m.; partly cloudy; p.m. clear. One in field in 1 party. Total party-hours 8 (4 on foot, 4 by car). Total party-miles 112 (4 on foot, 108 by car). Total 16 species; 20,534 individuals.

Virgil Smith (compiler—R R 1, Box 48A, Weskan, KS. 67762).

Wichita. 37° 41'N 97° 20'W. Center as described 1955. 17 December 1994; 8:00 a.m. to 5:00 p.m.; 29°-45°F. Wind N 2-5 mph. Still water open, moving water open; a.m. clear, p.m. clear. Fifteen observers in 4-8 parties. Total party-hours 52 (30 on foot, 22 by car). Total party-miles 334 (22 on foot, 312 by car). Total 90 species; 45,847 individuals.

Walker Butin, Wallace Champeny (compiler—R. R. 1, Oxford, KS. 67119), Jack and Norma Dennett, Chet Gresham, Bob Gress, Pete Janzen, Dan Kilby, Mike Lesan, Jean and Miriam Roark, Eddie Stegall, Sandra Tholen, Donald Vannoy, Gerald Wiens.

Wilson Reservoir. 38° 56'N 98° 34'W. Center as described 1994. 18 December 1994; 7:30 a.m. to 5:00 p.m.; 29°-51°F. Wind S 0-20 mph. Still water partly frozen, moving water open; a.m. clear, p.m. clear. Eleven observers in 3 parties. Total party-hours 26 (7.5 on foot, 18.5 by car), plus 1.5 hours owling. Total party-miles 253 (10 on foot, 243 by car), plus 1.5 miles owling. Total 77 species; 11,088 individuals. Seen in count circle count week but not count day: Sandhill Crane.

Chris Farney, Vicki Farney, Dan LaShelle, Penny Long, Jean Piland, Jim Piland, Andrea Rader, Ellen Rader, Heather Rader, Jennifer Rader, Mike Rader (compiler—P. O. Box 395, Wilson, KS. 67490).

Yoder. 37° 55'N 97° 50'W. Center as described 1994. 17 December 1994; 7:30 a.m. to 5:15 p.m.; 33°-45°F. Wind S 5-10 mph. Still water open, moving water open; a.m. partly cloudy, p.m. partly cloudy. Eight observers in 2 parties. Total party-hours 12 (6.5 on foot, 5.5 by car). Total party-miles 80 (10.5 on foot, 69.5 by car). Total 52 species; 5,581 individuals.

Mary Clark (compiler—3002 E. 30th, Hutchinson, KS. 67502), Dan Dyck, Edward Dyck, Heidi Dyck, Jennifer Dyck, Linda Dyck, Jim Smith, Marcalee Webb.

SPECIES	Alma/Lake Wab'see	Arkansas City	Baldwin	Baxter Springs	Black Wolf NW Ell Co	Bonner/ Spr./Lans.	Camp Naish	Cedar Bluff	Cheyenne Bottoms	Cimarron Nat. Grass	Dodge City	El Dorado Lake	Emporia
Red-throated Loon								2				4	
Common Loon												3	2
Pied-billed Grebe	5	2	2	5		2							
Horned Grebe								1					
Eared Grebe								1					
Western Grebe													
White Pelican						2							
Double-crested Cormorant												2	2
Great Blue Heron		25	4	5	2			1		1	1	7	8
Black-crowned Night Heron													
Tundra Swan													
Trumpeter Swan													
Gr. White-fronted Goose						3			1107				120
Snow Goose (White morph)	262		190			900			15	105			2902
Snow Goose (Blue morph)	51		10			350				20			
Snow Goose													
Ross's Goose						2							
Canada Goose	135	316	271	91		3000	77	480	265	3	97	850	1389
goose sp.												1482	
Wood Duck													1
Green-winged Teal				10				60	16	1			
American Black Duck													
Mallard	46	8	25	46		266		130	605		128	47	395
Northern Pintail								8	10	1			2
Blue-winged Teal													
Northern Shoveler				390		6							46
Gadwall	1		23	10		5						18	3
American Wigeon		1											2
Canvasback	1			20				1	11			3	452
Redhead				2					8				21
Ring-necked Duck	3			2				2					8
Greater Scaup						19							1
Lesser Scaup	5			12		32							46
Oldsquaw								2					2
White-winged Scoter									1				
Common Goldeneye	2	2	21	16		33		225	13			53	347
Bufflehead		1	6	20		6			1	1		28	3
Hooded Merganser	4					2			5			10	
Common Merganser						177		53	11			2041	14
Red-breasted Merganser			2			1		2					
Ruddy Duck			1			5			2				
duck sp.													
Turkey Vulture													
Bald Eagle		10			2	12	2	8	5			7	5
Northern Harrier	7	37	39	4	4	11	1	13	32	11	10	34	58
Sharp-shinned Hawk		6	6		1	3				1	1	2	9
Cooper's Hawk		1	4	1						1	1		7
Harris Hawk			1										
Accipiter Sp.		1											
Red-shouldered Hawk				2									
Red-tailed Hawk	27	124	256	22	27	101	6	24	5	14	32	54	176
Red-tailed (Harlan's) Hawk			4	2		1			1				2
Ferruginous Hawk			1					3		22	9		
Rough-legged Hawk	1	5	5		3	6		1	1	6		3	5
Buteo Sp.									7	1			
Golden Eagle								1		4	2		
American Kestrel	6	25	49	9	33	25		25	4	11	31	18	22
Merlin		2			1			1		4			1
Prairie Falcon			1		3				2	2	1	4	3
Ring-necked Pheasant	1	8			21			2	2	10	19		1
Greater Prairie Chicken													3
Lesser Prairie Chicken										2			
Wild Turkey	14				33	1	2					176	75
Northern Bobwhite	43	40	38	8	3	67	20			50	18	39	97
Scaled Quail										4			
Virginia Rail													
American Coot				9								13	2
Sandhill Crane									15				
Killdeer		7	3	5									
Greater Yellowlegs		1											
Lesser Yellowlegs													
Dunlin													
Common Snipe			1										
Bonaparte's Gull				40									2
Ring-billed Gull		118	21	18		44	9	212	60			5063	98
California Gull													
Herring Gull	3	1						10				10	3
Thayer's Gull												1	
Iceland Gull													
Glaucous Gull									100				
Larus sp.													
Rock Dove	2	102	139	40	35	67	35	30		5	313	29	418
Mourning Dove	16	47	232		7	92	27			44		1	25
Barn Owl								1					
Eastern Screech-Owl	1	7	5		4	2	4	2					5
Great Horned Owl	1	28	14	1	3	2	1	1	8	12			3
Barred Owl		9	6			1						2	6
Long-eared Owl								6					
Short-eared Owl	3		1					12	2				

SPECIES	Alma/Lake Wab'see	Arkansas City	Baldwin	Baxter Springs	Black Wolf NW Ell. Co.	Bonner Sp./Lans	Camp Naish	Cedar Bluff	Cheyenne Bottoms	Cimarron Nat. Grass	Dodge City	El Dorado Lake	Emporia
Anna's Hummingbird												6	12
Belted Kingfisher	5	16	4	5	2	6	1						
Red-headed Woodpecker		31	19	12		22	18						29
Red-bellied Woodpecker	22	82	103	10	7	69	35	4	2			8	81
Yellow-bellied Sapsucker	1	2	4			3							4
Ladder-backed Woodpecker										3			
Downy Woodpecker	8	67	76	15	11	45	17	11	2	8	2	19	41
Hairy Woodpecker	6	9	11	2	2	7	3	1		7		2	22
Northern Flicker	13	30	4	6		2	2	16	25	12		3	
Yellow-shafted		84	55	2	1	22	1	11		10	9	6	44
Red-shafted		3			2			3		19	1		4
Pileated Woodpecker		5	1	1									5
Horned Lark	2	1000	859	1005	475	194		580		689	1045	330	46
Blue Jay	16	136	348	33	3	200	47		3	13	15	6	129
Black-billed Magpie			4		1			28		76	62		
American Crow	44	340	481	34	27	198	26	57		23	48	314	309
Chihuahuan Raven										2			
Black-capped Chickadee	43		263		41	211	72	67	24		11	60	245
Carolina Chickadee		200		32									
Tufted Titmouse	14	96	114	15		56	48					17	81
Red-breasted Nuthatch						1					1		3
White-breasted Nuthatch	3	28	42	1	11	23	22	12	1	4		2	49
Brown Creeper	2	9	6		3	5	2	6					14
Carolina Wren	7	69	35	18	3	19	14					6	32
Bewick's Wren	2									2			1
Winter Wren	2	3				1	1						4
Marsh Wren								6		4			
Golden-crowned Kinglet		2	2		2	5	4	1					12
Ruby-crowned Kinglet		5	1			1				1			2
Eastern Bluebird	20	114	165	30		18	11			2		8	52
Mountain Bluebird													
Townsend's Solitaire								8		8			
Hermit Thrush			1										
American Robin	250	2	77		1		2	5		15	89	1	32
Gray Catbird													
Northern Mockingbird		25	31	5		6		1		1	1	2	2
Brown Thrasher				1	1								
Curve-billed Thrasher										1			
American Pipit													
Cedar Waxwing	1	1	28		1	17	4			3	9		16
Northern Shrike	1				1			2					
Loggerhead Shrike		5	11	2						6		5	1
European Starling	168	349	2544	127	130	770	9	134	22	110	1283	2772	15068
Yellow-rump. Warbler (Myrtle)	10	33	17			16						1	
Yel.-rump. Warb. (Audubon's)						1							
Common Yellow-throat													
Northern Cardinal	54	303	324	52	13	297	38	4	6		12	63	203
Rufous-sided Towhee	1	19	1		2	2		5					
American Tree Sparrow	265	317	878	10	325	761	25	546	157	539	10	719	942
Field Sparrow		17	3										10
Vesper Sparrow													
Lark Bunting								1		34			
Savannah Sparrow			2	8									
LeContes Sparrow													
Fox Sparrow		3				6						1	
Song Sparrow	12	73	35	40	24	62	3	29		39		4	73
Lincoln's Sparrow		2				3							
Swamp Sparrow	2	1	1	24		3				2			
White-throated Sparrow		7		19		6							3
White-crowned Sparrow	2	9	15	5	2	48	1	18		142	38		3
Harris' Sparrow	38	435	69		160	20	1	69	15		62	572	286
Dark-eyed Junco	245	229	115		14		152	325	24	300		80	
White-winged													
Slate-colored		262	690	68	260	886		105		140	130	31	288
Oregon		17	20	2	12	27		72		333	13	2	31
Lapland Longspur		500	181		45	50		8		8			51
Chestnut-collared Longspur													
Red-winged Blackbird	22	30757	2440	160	480	6550		146	271	226	3	15811	2404
Eastern Meadowlark	3	19	95	7	2	5						75	480
Western Meadowlark		29	2		3	2		288		224	358		
meadowlark sp.		389	556	250	394	107			35			16	
Yellow-headed Blackbird	1												
Rusty Blackbird	385	1	4	9		23						350	10
Brewer's Blackbird		32	13	1000								150	211
Great-tailed Grackle						258			1				5
Common Grackle		1	8	11013	1	8			6		227		733
Brown-headed Cowbird		319	113			3		230	102	1	42	19	51
blackbird sp									4				
Purple Finch			27			2							2
House Finch	6	88	22		42	121	1	91	5	134	393	45	31
Pine Siskin					1	1		40		1		1	4
American Goldfinch	10	123	413	17	29	361	59	90	2	13	11	64	121
House Sparrow	21	431	648	22	208	646	18	145		617	1075	1137	217
Total	2347	38063	13362	14852	2924	17420	821	4485	3021	4108	5615	31230	29291
Species	60	75	78	59	51	79	39	64	42	58	40	61	91

SPECIES	Garden City	Halstead/Newton	Hays	Hillsdale Lake	Redmond Reservoir	Junction City	Kirwin Reservoir	Lakin	Lawrence	L'vworth/Atchison	Liberal/Seward Co	Linn County	Manhattan
Red-throated Loon						1	1						
Common Loon				1								1	
Pied-billed Grebe					1			1	2			4	
Horned Grebe							1						2
Eared Grebe													
Western Grebe													
White Pelican					1	3	26						
Double-crested Cormorant					117		26		216	1		1	12
Great Blue Heron	1	8	1	3	25	23	4	7	12	1	2	15	38
Black-crowned Night Heron													
Tundra Swan													
Trumpeter Swan					2								
Gr. White-fronted Goose						1	2	150				1	1
Snow Goose (White morph)				390	6800		1	1021	190	8030		70000	1
Snow Goose (Blue morph)					5000		4	4	75	5030		30000	
Snow Goose													
Ross's Goose								1		1		23	
Canada Goose	1000	176		353	3309	140	30000	9718	1480	438	900	3500	2080
goose sp.													
Wood Duck	36										3	4	
Green-winged Teal	60					18	6	3	2	2	444	3	396
American Black Duck													
Mallard	1757	28	12	14	2831	68	12000	3535	1968	84	3160	5360	6084
Northern Pintail	15			1		12		71		1	216	7	9
Blue-winged Teal								6					
Northern Shoveler	1				47			11	8		65	4	
Gadwall	4				23	73	4	8	51		1	52	269
American Wigeon	7				76		1	121	2		110		23
Canvasback	31			4		2					325	23	32
Redhead	4					9		3			10	6	8
Ring-necked Duck	2							8	5		15	15	48
Greater Scaup									8				
Lesser Scaup	1	1		7					23		206	1	30
Oldsquaw	1								1		2		1
White-winged Scoter							1						
Common Goldeneye				83	15	109	130	9	1008	17	4	42	136
Bufflehead				10	41	22			7		6	15	13
Hooded Merganser				36	9	40	3		6			25	11
Common Merganser				350	27	7035	1857	4	3500			1	539
Red-breasted Merganser							3						
Ruddy Duck											25		1
duck sp.													
Turkey Vulture					2								
Bald Eagle	2		1	3	39	34	17	5	56	12	5	8	45
Northern Harrier	23	17	2	20	57	21	12	25	34	3	37	57	42
Sharp-shinned Hawk	3	2	1			3	2		15	1		4	12
Cooper's Hawk	1	2	1		2	2	2		2	1	1	2	5
Harris Hawk													
Accipiter Sp.		1											
Red-shouldered Hawk								1				3	
Red-tailed Hawk	30	111	14	78	81	55	21	36	209	39	22	221	205
Red-tailed (Harlan's) Hawk		4			1	1				1		2	10
Ferruginous Hawk	6		1					14			4		
Rough-legged Hawk	8			1	4	2		15	2		11		5
Buteo Sp.	10	3	2		1			7					10
Golden Eagle							1	2			1		1
American Kestrel	14	33	10	7	14	21	11	20	58	20	9	42	55
Merlin	2					1		1			1		3
Prairie Falcon	1		3		2		3	7	2		4	3	4
Ring-necked Pheasant	179	16	17			5	33	26		1	7		23
Greater Prairie Chicken													1
Lesser Prairie Chicken													
Wild Turkey	9	254			46		3		46	8		24	45
Northern Bobwhite	196	105		2	11	55	26	1	65	10		40	460
Scaled Quail	12												
Virginia Rail								6					
American Coot					5	32	35		25		14	224	4
Sandhill Crane					1			43			49		
Killdeer		2			1				21		2	1	19
Greater Yellowlegs													
Lesser Yellowlegs									1				
Dunlin													
Common Snipe			3						9		1		
Bonaparte's Gull					100				3				
Ring-billed Gull				523	5110	726	41	9	6200		3	62	1156
California Gull													
Herring Gull				3	1	115	7	2	68				41
Thayer's Gull													
Iceland Gull													
Glaucous Gull				1									
Larus sp.													
Rock Dove	234	175	189	40	12	115	2	58	634	191	88	212	718
Mourning Dove	2	81	2	60	104	90	3		177	13	39	37	261
Barn Owl	1		1										
Eastern Screech-Owl		3				3	14		9	1		9	
Great Horned Owl	13	6	5	2	7	7	3	3	10		1	3	7
Barred Owl				2	5	4			6			10	9
Long-eared Owl						1							
Short-eared Owl	1		2				1	1	1			3	

SPECIES	Garden City	Halstead/Newton	Hays	Hillsdale Lake	Redmond Reservoir	Junction City	Kirwin Reservoir	Lakin	Lawrence	L'worth/Atchison	Liberal/Seward Co	Linn County	Manhattan
Anna's Hummingbird													
Belted Kingfisher		7	2	1	3	7	2	2	12	4	2	6	38
Red-headed Woodpecker				1	5				31	20		202	23
Red-bellied Woodpecker	3	33	3	12	45	22	16		120	38	6	196	158
Yellow-bellied Sapsucker		1	1			5			6	1		8	10
Ladder-backed Woodpecker													
Downy Woodpecker	9	49	5	12	22	16	14	6	151	30	6	138	147
Hairy Woodpecker		6	1	1	5	5	6	3	21	7	6	19	31
Northern Flicker	12	38		6	49	8	15	6	25	8	7	22	77
Yellow-shafted	7	22	2			28	1	4	56	5		86	77
Red-shafted	13	5	2			1		10	3	1			6
Pileated Woodpecker				1					2	1		16	
Horned Lark	664	709	2488	247	48		430	744	149	163	14722	141	91
Blue Jay	40	97	2	30	55	39	3	17	240	85	4	502	292
Black-billed Magpie	131		5				27	37			4		
American Crow	97	361	31	243	522	228	31	45	626	107	21	547	2217
Chihuahuan Raven													
Black-capped Chickadee		253	53	59	97	124	44		454	85	5	243	819
Carolina Chickadee													
Tufted Titmouse		6		25	68	13			193			201	197
Red-breasted Nuthatch	1												
White-breasted Nuthatch	8	2	1	6	12	15	19	2	79	16	4	74	136
Brown Creeper	1	4			6	1	1		24	2	1	13	18
Carolina Wren		14		5	5	9			52	10		47	62
Bewick's Wren						1							2
Winter Wren									3			1	1
Marsh Wren			1			3		23			5		
Golden-crowned Kinglet		14	1		11	9	2		18	3		4	25
Ruby-crowned Kinglet						1			3			2	1
Eastern Bluebird		13		17	39	21		1	166	8		151	157
Mountain Bluebird						8							
Townsend's Solitaire	2		1								2		1
Hermit Thrush													
American Robin	261	12		1	8	157	35	6	91		2	22	546
Gray Catbird													
Northern Mockingbird	2	1		3	3	3		5	10	3		13	3
Brown Thrasher	1	1							1				
Curve-billed Thrasher	1												
American Pipit											3		
Cedar Waxwing	55					65	1		11			26	44
Northern Shrike							2						
Loggerhead Shrike		1		6	4	3		2	8	3	2	1	6
European Starling	6842	2907	458	310	564	500	175	451	3592	952	50399	820	6279
Yel.-rump. Warb. (Myrtle)		2			5	5			3			30	4
Yel.-rump. Warb. (Audubon's)													
Common Yellow-throat													
Northern Cardinal	2	136	6	104	55	42	29		398	249	2	530	467
Rufous-sided Towhee	1	10			3	4	1		1	3		3	15
American Tree Sparrow	140	503	99	454	133	198	760	61	700	340	317	1149	1051
Field Sparrow	2	3		13		3			1		1	1	11
Vesper Sparrow													
Lark Bunting											45		
Savannah Sparrow									1				
LeContes Sparrow		1										2	
Fox Sparrow					3				5	8		4	
Song Sparrow		45	28	9	3	10	13	10	308	85	7	349	94
Lincoln's Sparrow					5	2			1			1	1
Swamp Sparrow		2			1	1			134	3	1	76	2
White-throated Sparrow				1	4			1	18	7		24	13
White-crowned Sparrow	391	5		99	11	21	16	13	179	35	76	340	28
Harris' Sparrow	7	557	21	26	122	350	324	3	225	38		110	448
Dark-eyed Junco	390	356	3		155	29	345	85	271	52	115	338	
White-winged	2												
Slate-colored	140	345	202			173		53	626	915		634	1502
Oregon	162	11	3			1		42	6	14		4	9
Lapland Longspur	21		55	2			2300	2	2		2337	101	
Chestnut-collared Longspur											255		
Red-winged Blackbird	123	1711	1308	850	18203	206	188	7771	936	24	9485	8424	719
Eastern Meadowlark		1		267	190	44			71	1		144	52
Western Meadowlark	983	2	239			27	168	489	26	3	586	4	47
meadowlark sp.		959				57			277	123		234	604
Yellow-headed Blackbird													
Rusty Blackbird		5		1		20			21			1500	5
Brewer's Blackbird		2		1	46	107					2	5	5
Great-tailed Grackle	96									1400	1059	1	
Common Grackle	1				18			65	3	37	3	65	1
Brown-headed Cowbird	41	55	5	109	266			20	207	4	6	37	4
blackbird sp.											100		
Purple Finch					5	7			9				5
House Finch	469	89	52	8	20	86	120	16	543	426	135	96	566
Pine Siskin		4			6	509	1	3	47	43			187
American Goldfinch	32	85	32	137	142	667	73	51	416	118	25	175	762
House Sparrow	4046	756	315	115	18	63	94	1079	939	438	697	610	746
Total	18869	11229	5692	5176	44913	12773	49562	26094	28768	19824	86250	128590	31687
Species	66	59	45	60	77	79	67	67	93	61	75	92	93

SPECIES	Meade Co.	Olathe	Old G'field Co	Olsburg	Oskl'sa/PerryLake	Pomona Lake	Quivira Refuge	Red Hills	Salina	Sawyer	Scott Lake	SEMined Land
Red-throated Loon												
Common Loon					1							
Pied-billed Grebe		2			2	3		1	1			12
Horned Grebe					1							
Eared Grebe												
Western Grebe												
White Pelican					5		154					
Double-crested Cormorant					13				1			
Great Blue Heron	1	3	5	4	8	2	1	1	2		3	9
Black-crowned Night Heron												
Tundra Swan							1		1			
Trumpeter Swan												
Gr. White-fronted Goose							1505		1			
Snow Goose (White morph)		12					380		2			19
Snow Goose (Blue morph)							40		2			6
Snow Goose					1500							
Ross's Goose					4		1					
Canada Goose	2500	3696	61	12	818	95	40050	90	980	1302	8	53
goose sp.												
Wood Duck			3								5	
Green-winged Teal		1			5		17					
American Black Duck					1							
Mallard	109	646	95	43	1422	30	2028	370	87	905	155	178
Northern Pintail					1		62	12	1			
Blue-winged Teal			5		3			1		3		
Northern Shoveler	5	3			5		10			1		
Gadwall		66			45	1	1		40	3		7
American Wigeon		6	4		2		67	40	5	2		10
Canvasback		6			6		2		3			
Redhead							3	1	13	1		
Ring-necked Duck					7		1	75	40	4		
Greater Scaup												
Lesser Scaup	3	1	13	1			13		7	1		
Oldsquaw									1			
White-winged Scoter		1										
Common Goldeneye	1	8		12	261	56	58	1	30	1		
Bufflehead		33		10	3		3		4			
Hooded Merganser		2		3	1	16						
Common Merganser				477	1600	122			153	1		
Red-breasted Merganser												
Ruddy Duck							11					
duck sp.									2			11
Turkey Vulture												
Bald Eagle	1	1		8	36		39		2			2
Northern Harrier	1	4	31	15	10	6	50	19	12	15	5	57
Sharp-shinned Hawk		1	3	5	2	1	4	3	2		1	3
Cooper's Hawk				3	2		1		1	1		2
Harris Hawk												
Accipiter Sp.				1								
Red-shouldered Hawk												
Red-tailed Hawk	4	101	28	42	110	17	62	48	22	35	7	165
Red-tailed (Harlan's) Hawk		2							1		1	
Ferruginous Hawk	1		3				4	3			3	
Rough-legged Hawk	2	1	4	1	2		1			2	1	
Buteo Sp.	1		9						4	1		
Golden Eagle			1									
American Kestrel	6	43	20	13	27	9	17	17	22	16	2	19
Merlin			1				1	1				
Prairie Falcon	1		6				1			3	2	
Ring-necked Pheasant	4		49	7	3		2		7	10	8	
Greater Prairie Chicken				17								
Lesser Prairie Chicken												
Wild Turkey	26			42	89			15		50	28	
Northern Bobwhite	4	16		69	47	11	36	12	49	18		19
Scaled Quail												
Virginia Rail			3									
American Coot		6	75		2	1			1			
Sandhill Crane			20				4300					
Killdeer							1			2		34
Greater Yellowlegs												
Lesser Yellowlegs												
Dunlin							7					
Common Snipe												
Bonaparte's Gull					134							
Ring-billed Gull		274		92	590	43	36		67			
California Gull												
Herring Gull		2		1	11	2	1					
Thayer's Gull												
Iceland Gull												
Glaucous Gull												
Larus sp.									2			2
Rock Dove	7	189		6	76	2	4	25	986	45	6	4
Mourning Dove	5	246		71	26	17	29	3	7	33		58
Barn Owl												
Eastern Screech-Owl		3		1	25	2					1	1
Great Horned Owl	4	7	6	5	13	3	7			4	8	
Barred Owl		2		1	8	1				2		1
Long-eared Owl	1										4	
Short-eared Owl				5			1					

SPECIES	Meade Co.	Olathe	Old G'field Co.	Olsburg	Os'loosa PerryLake	Pomona Lake	Quivira Refuge	Red Hills	Salina	Sawyer	Scott Lake	SEMined Land
Anna's Hummingbird												
Belted Kingfisher	1	4		3	8	1		3	4	13	2	3
Red-headed Woodpecker		1		1	73	4	1		1	1		51
Red-bellied Woodpecker	2	31	1	30	62	22	12	5	16	17	4	47
Yellow-bellied Sapsucker		1		1						1		
Ladder-backed Woodpecker												
Downy Woodpecker	3	48	1	44	74	15	10	4	20	18	21	22
Hairy Woodpecker	2	2		11	9	2	3	1	2	3	3	2
Northern Flicker	9		2	41	4	11	18		3	13	4	16
Yellow-shafted	1	11	2	28	4		4	24	7	5	5	41
Red-shafted			6	1	1		3	3	2	5	5	
Pileated Woodpecker												2
Horned Lark	163	53	1937	30	32	7	215		57	410	1948	1612
Blue Jay		124		135	212	44	5		16		14	161
Black-billed Magpie			6						2		31	
American Crow	2	296	5	1547	179	120	86	125	78	84	2	516
Chihuahuan Raven												
Black-capped Chickadee	2	193		160	279	62	45		85	96	120	
Carolina Chickadee								28				59
Tufted Titmouse		84		52	112	27		3	1	11		21
Red-breasted Nuthatch							1		1			
White-breasted Nuthatch	5	8	2	33	57	4	7		4	44	9	1
Brown Creeper		1		2	9					5	5	
Carolina Wren		10		9	34	5			1	6		16
Bewick's Wren								1				
Winter Wren		1		2	2					2		
Marsh Wren			7								1	
Golden-crowned Kinglet				19	8			1	1	1	1	1
Ruby-crowned Kinglet					2			1	2	1	3	1
Eastern Bluebird		28		41	188	57	27	24		17	1	20
Mountain Bluebird			1					24		3		
Townsend's Solitaire							1				12	
Hermit Thrush										1		
American Robin		58		130	61	34	7	5	5	142	10	8
Gray Catbird									1			
Northern Mockingbird		5			7						1	21
Brown Thrasher												
Curve-billed Thrasher												
American Pipit												
Cedar Waxwing				53	59		30	2		42		12
Northern Shrike						1		1				
Loggerhead Shrike	2	5		1	3		7		2	2		10
European Starling	227	1180	47	122	805	350	331	48	692	97	470	2452
Yel.-rump. Warb. (Myrtle)				2	4		1	1		2		
Yel.-rump. Warb. (Audubon's)												
Common Yellow-throat												
Northern Cardinal	2	233		109	218	187	33	68	72	37	8	256
Rufous-sided Towhee				14	25				2		2	
American Tree Sparrow	193	287	220	1008	442	421	1821	80	116	196	48	53
Field Sparrow					6		9			5		18
Vesper Sparrow					3							
Lark Bunting												
Savannah Sparrow				1	1		3					3
LeContes Sparrow												
Fox Sparrow					4	1						
Song Sparrow	16	6	11	155	126	9	24	9		8	12	34
Lincoln's Sparrow		1		1	2		3					
Swamp Sparrow		1			11						2	3
White-throated Sparrow				5	3	1	2					32
White-crowned Sparrow	187	6		21	6	2	48	1	1		11	149
Harris' Sparrow	65	29		529	153	88	374	120	127	101	5	9
Dark-eyed Junco	364			1468	317				64	238	165	140
White-winged											1	
Slate-colored		332	3		903	236	530	587	66		21	62
Oregon		2	21		10	11	7	28	6		254	
Lapland Longspur		25	332				475			1	3096	150
Chestnut-collared Longspur	25											
Red-winged Blackbird	870	91	170	158	366	1	7141	350	109	401	87	11099
Eastern Meadowlark		123			114	22	62	2		1		448
Western Meadowlark	43		156		3		95		1		3	
meadowlark sp.				75	172		555	178	197	198		207
Yellow-headed Blackbird									1			
Rusty Blackbird		2	6	21	20				2			133
Brewer's Blackbird					2		3		53		3	23
Great-tailed Grackle												
Common Grackle		1			1					1	9	2376
Brown-headed Cowbird	1	4	12	47	14		19	4	150	87		249
blackbird sp.							1000					
Purple Finch		1		3	18							
House Finch	50	118		127	231	11	4	27	56	10	248	6
Pine Siskin		2		5	35	2	2				12	
American Goldfinch	6	216	8	1530	477	150	187	28	77	19	90	27
House Sparrow	45	827	285	79	468	9	202	35	392	27	954	295
Total	4973	10144	3686	9092	13390	2357	62425	2559	5055	4833	7946	21538
Species	45	70	41	68	92	52	79	50	66	64	54	61

SPECIES	Slate Creek	Syracuse	Topeka	Tribune	Udall/ Winfield	Waconda Lake	Wake- field	Webster Reservoir	Weskan	Wichita	Wilson Reservoir	Yoder	TOTAL
Red-throated Loon													1
Common Loon						2		5			5		22
Pied-billed Grebe			1		2					21	2		77
Horned Grebe													4
Eared Grebe								1					1
Western Grebe													1
White Pelican						1	17						209
Double-crested Cormorant					5	12	2			1	6		417
Great Blue Heron	14		11		19	6		5		25	3	3	319
Black-crowned Night Heron										1			1
Tundra Swan													2
Trumpeter Swan			1										3
Gr. White-fronted Goose	98					64					28		3081
Snow Goose (White morph)	1		10015		106	2200				2			103544
Snow Goose (Blue morph)						275				5			40872
Snow Goose													1500
Ross's Goose						1				1			34
Canada Goose	28		975		600	13280	627	3500		9225	1325	1300	140498
goose sp.													95
Wood Duck			3		2			2		2			61
Green-winged Teal	18				2	41	4			59	13		1181
American Black Duck													1
Mallard	366		781		873	11850	2063	950		912	1911	36	64407
Northern Pintail	13									3			445
Blue-winged Teal													52
Northern Shoveler	24		11			13		1		13		34	672
Gadwall	3		133		30		39	11		268	18	8	1210
American Wigeon	1				2					114			596
Canvasback			8		1			2		8		10	951
Redhead			12							31	5		137
Ring-necked Duck	10		301					5		20			590
Greater Scaup													9
Lesser Scaup	42		19			2	12			15	2		495
Oldsquaw			1								1		13
White-winged Scoter													2
Common Goldeneye	30		87		87	1663	30	300		100	862	1	5853
Bufflehead	1		19		16	15				51	2		337
Hooded Merganser					9	7	6			28	79		302
Common Merganser		1	13		6	9765	2248	2275		6	579		32855
Red-breasted Merganser						3					2		13
Ruddy Duck	12							1		2			60
duck sp.												38	51
Turkey Vulture			1										2
Bald Eagle	12		5		6	74	15	13			4	5	501
Northern Harrier	50	3	4		83	23	6	9	2	1	22	16	1088
Sharp-shinned Hawk	2	1	5		6	4		3		3	1	1	123
Cooper's Hawk	4	1	2			1	2	2		1			59
Harris Hawk													1
Accipiter Sp.					1								4
Red-shouldered Hawk													6
Red-tailed Hawk	151	11	172		358	36	36	32	1	84	31	22	3565
Red-tailed (Harlan's) Hawk								1		2		2	38
Ferruginous Hawk		3							1			1	79
Rough-legged Hawk		2		9	1		1	1	3	1		1	117
Buteo Sp.													55
Golden Eagle		3				1							17
American Kestrel	42	5	37		61	16	7	17	1	26	38	8	1041
Merlin			2			1	1				2		26
Prairie Falcon	3	2			3	1			1		2	3	73
Ring-necked Pheasant	48			2	9	48	34	13	12	10	13	16	666
Greater Prairie Chicken											4		25
Lesser Prairie Chicken													2
Wild Turkey	2		3		68		20			1		4	1084
Northern Bobwhite		1	110		120			33		27	42	48	2056
Scaled Quail													16
Virginia Rail													9
American Coot			434			9		75		33			999
Sandhill Crane													4428
Killdeer	5					1				1		2	107
Greater Yellowlegs													1
Lesser Yellowlegs													7
Dunlin													29
Common Snipe	9									6			154
Bonaparte's Gull											9		30966
Ring-billed Gull	2		207		271	5450	78	156		2924	253	1050	1
California Gull						1							867
Herring Gull					3	530	2	24		9	18		4
Thayer's Gull						1				2			1
Iceland Gull										1			1
Glaucous Gull													104
Larus sp.													6765
Rock Dove	3	12	655		81	44	14	44	2	632	4	41	2270
Mourning Dove	19		233		53	21	9	45		26	5	4	4
Barn Owl	1												4
Eastern Screech-Owl	3				1	11	2	5		1	3		128
Great Horned Owl	26	3	4		29	7	2	2	2	8	6	3	290
Barred Owl	18		2		8								103
Long-eared Owl											1		13
Short-eared Owl	1					5							39

SPECIES	Slate Creek	Syracuse	Topeka	Tribune	Udall/Winfield	Waconda Lake	Wakefield	Webster Reservoir	Weskan	Wichita	Wilson Reservoir	Yoder	TOTAL
Anna's Hummingbird					1								1
Belted Kingfisher	2		17		6	4	1	6		9	3	1	234
Red-headed Woodpecker			18		14	1	1						579
Red-bellied Woodpecker	23	2	76		62	19	11	11		18	6	7	1559
Yellow-bellied Sapsucker	2		2		1					2			56
Ladder-backed Woodpecker													3
Downy Woodpecker	44	2	66		39	18	12	22		37	5	10	1462
Hairy Woodpecker	6	1	12		5	3	2	4		6	2	1	265
Northern Flicker	25		33		34	7	2	14	5	35	6	15	681
Yellow-shafted	18	18	16		24	2	11	6		19		1	771
Red-shafted	1	3			3		3	1		8			117
Pileated Woodpecker	1				1								36
Horned Lark	106	256	60	13	373	16500	7	450	20000	556	457	128	72191
Blue Jay	40	10	226	2	125	13	78	12	1	74	1	7	3655
Black-billed Magpie		41				18	1	34			1		509
American Crow	132	6	484		542	49	208	54		12280	27	78	23877
Chihuahuan Raven													2
Black-capped Chickadee		4	399		64	61	79	125		159	33	60	5299
Carolina Chickadee	74				95								488
Tufted Titmouse	27		106		81		16			24			1709
Red-breasted Nuthatch			6		2					1			17
White-breasted Nuthatch	9	2	29		28	29	9	32		7	1	1	893
Brown Creeper	4		10		6	8		1		3			172
Carolina Wren	8		10		35	2	2			14	2		561
Bewick's Wren		2			5						1		17
Winter Wren	1		2							1	1		28
Marsh Wren	1	1			1						1		54
Golden-crowned Kinglet			9		18	1	12			7	1		195
Ruby-crowned Kinglet	2		1		10					2	1	1	44
Eastern Bluebird	22	12	132		35		10	5				1	1613
Mountain Bluebird		10											46
Townsend's Solitaire							1	2		1	1		40
Hermit Thrush													2
American Robin	3	126	153	17	52	19	31	105		34	79	172	2866
Gray Catbird													1
Northern Mockingbird	9		5		30					3			201
Brown Thrasher			1		1					1			10
Curve-billed Thrasher													2
American Pipit											1		4
Cedar Waxwing			71		16		1	5		40	8	6	627
Northern Shrike		1				2		3			1		20
Loggerhead Shrike	8	2	5		8		1			1			144
European Starling	3434	104	4143	6	2988	2225	217	140	300	10265	41	390	129424
Yel.-rump. Warb. (Myrtle)	11		1		5		5	12		29	1	5	205
Yel.-rump. Warb. (Audubon's)													1
Common Yellowthroat					1								1
Northern Cardinal	248	2	249		293	9	103	7		179	14	83	5799
Rufous-sided Towhee	2		2		5	14	25	7		8	19	2	198
American Tree Sparrow	844	11	170		1835	1012	541	775		260	830	426	22988
Field Sparrow	7		2		5					3		1	121
Vesper Sparrow													4
Lark Bunting				4									84
Savannah Sparrow	14				1					1			35
LeContes Sparrow													3
Fox Sparrow	1		1				1			1			39
Song Sparrow	55	4	16		55	159	147	84		49	145	2	2481
Lincoln's Sparrow					2	2	2	1			2		31
Swamp Sparrow	3				2	4	13	1		1	3		297
White-throated Sparrow			9		1	1	26			4			187
White-crowned Sparrow	99	3	7		15	161	28	518		4	106		2870
Harris' Sparrow	963		28		1065	618	1026	326		374	784	134	10876
Dark-eyed Junco	405		692		608	1010		430	2	434	430	170	10560
White-winged													34
Slate-colored	30	24	33	12	176		492	200		76	69		11273
Oregon	1	130	4	9	10		7	62		5	2		1348
Lapland Longspur	11	1		12	71	37911		466		9	348		48571
Chestnut-collared Longspur													280
Red-winged Blackbird	2500000		157		20729	770	235	375		2148	1780	805	2657060
Eastern Meadowlark	166		1		11	11	5			3	3		2428
Western Meadowlark	1	40			15	122	15	60	1		16		4051
meadowlark sp.	490		417		2320	360	59	460		297	170	136	10292
Yellow-headed Blackbird	1												3
Rusty Blackbird	35				357								2910
Brewer's Blackbird	80				269								2007
Great-tailed Grackle	35									1347			4210
Common Grackle	76		11		5					448			15118
Brown-headed Cowbird	3905				2275	151	22	20		370	6	2	8972
blackbird sp.													1104
Purple Finch			13	1	1		11	1					106
House Finch	41	6	299	10	169	6	11	264		169	19	1	5488
Pine Siskin			14		4	14	11	125			47	12	1133
American Goldfinch	93	2	330		1025	291	144	315		153	101	80	9377
House Sparrow	574	48	810	46	945	117	16	65	200	1156	212	186	23094
Total	2513255	922	23633	143	39902	107209	8938	13139	20534	45847	11088	5581	3575022
Species	82	41	79	12	89	75	67	66	16	90	77	52	158