



The Horned Lark

The newsletter of the
Kansas Ornithological Society

September 2008

Vol. 35, No. 3

President's Message

It was with great sadness that I heard of **Marvin Schwilling's** passing. Due to health problems, Marvin had not been able to partake in KOS functions for about eight years. Unfortunately, this deprived many of our members of knowing him

For many years, Marvin was about the only Kansas ornithology contact in the western part of the state. He was stationed in Garden City for several years and reported many observations which added new species to the state list. He found a Black-throated Sparrow in his garage in 1952. He rediscovered the Chihuahuan Raven nesting in the state and found a nest of the Long-billed Curlew. We were birding together in Morton County when we found the first Broad-tailed Hummingbird and the first nesting record of Brewer's Sparrow. Marvin later moved to Great Bend as the manager of Cheyenne Bottoms.

His sharp eye added much knowledge to our shorebird information.

Marvin will be greatly missed. He will remain highly appreciated for his contribution to Kansas ornithology and lepidoptery. Several KOS members have shared tributes to Marvin in this issue. They begin on page 4.

This is my final column. It has been a pleasure serving as your leader. I am sure **Nancy Leo** will take good care of you as your next president: she will take the reins at the fall KOS meeting, October 3-5. I hope to see you in Hays.

Max C. Thompson

President

From the field

Being one of five siblings, I know about sharing living space.

In June, I returned from a great Wichita Audubon Society trip to Minnesota and Michigan. I looked forward to lounging in my hammock and reading. However, a pair of American Robins weren't keen on that idea.

While I was gone, they had built a nest in the ash tree next to my deck. The female "tut-tut"ed and "peek"ed whenever I stepped outside. She didn't want to share the general area, so I gave up my deck space and hammock.

Several days later, two wobbly, naked heads poked above the nest rim whenever an adult came to feed. They fledged 10 days later, but by then it was too hot to use the hammock.

If asked, I'll be willing to share again next year.

—CKM



KOS member Kevin Groeneweg searches for birds at a stop along the Dalton Breeding Bird Survey route in June. The route, which originates southwest of Oxford (Cowley County) produced 59 species, including a pair of Least Terns. Photo by Cheryl K. Miller, © 2008.

KOS Board of Directors

•**President** Max Thompson, 1729 E. 11th Ave., Winfield, KS 67156; maxt@cox.net

•**Vice-President** Nancy Leo, njleo@earthlink.net

•**Corresponding Secretary** Gregg Friesen, 515 E. 4th, Newton, KS 67114; gfff@sbcglobal.net

•**Membership Development Coordinator** Mark Land, 8447 Lamar, Overland Park, KS 66207; kestrel@aol.com

•**Treasurer** Terry Mannell, 218 Northridge Drive, Hays, KS 67601; terryman@ruraltel.net

•**Business Manager** Pete Janzen, 3137 Mascot, Wichita, KS 67204; pete.janzen@sbcglobal.net

•**Editor** KOS Bulletin, Gene Young, Northern Oklahoma College, 1220 E. Grand Ave., Tonkawa, OK 74653-0310; eugene.young@north-ok.edu, youngg6264@yahoo.com

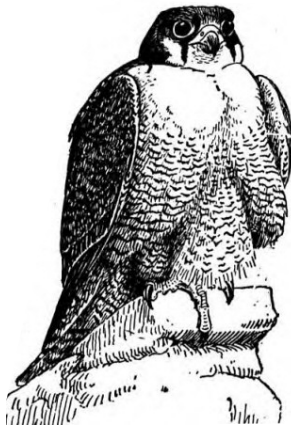
•**Editor** The Horned Lark, Cheryl K. Miller, avian67226@gmail.com

•**Past-President** Gene Young, Northern Oklahoma College, 1220 E. Grand Ave., Tonkawa, OK 74653-0310; eugene.young@north-ok.edu, youngg6264@yahoo.com

•**Board Members:**
Bob Broyles, bbroyles@butlercc.edu
Patty Marlett, pmarlett@cox.net
Rob Penner, rpenner@tnc.org
Lisa Weeks, lfw@kc.rr.com

In memoriam

Former KOS member **Harrison Bud Tordoff**, 85, died July 24 in St. Paul, Minn. In 1956, he wrote the new Checklist of the Birds of Kansas while curator of birds at the University of Kansas Museum of Natural History. Along with **Marvin Schwilling** he revived the interest in southwest Kansas birds, adding Sage Sparrow to the state list. He led efforts in restoring the Midwest's Peregrine Falcon population, decimated by DDT use in the 1950s and 1960s. He left KU for the University of Michigan, and



then the University of Minnesota, where he retired as professor emeritus of ecology, evolution and behavior and former director of the Bell Museum of Natural History.

Minnesota Public Radio's "Voices of Minnesota" series features an interview with Tordoff. He discusses the Peregrine Falcon poisoning and recovery efforts: minnesota.publicradio.org/display/web/2008/07/30/midday2/?refid=0

KOS fall meeting, October 3-5, 2008

Hays, Ellis County

Join KOS members for a weekend of paper presentations and birding in the Smoky Hills of Kansas, an area named for the early morning haze that often gathers in the valleys. On average this region receives 18-26 inches of precipitation annually, and short- and mid-grass prairies typify the vegetation. Birders may expect to find a variety of birds in these mixed habitats. Outcrops of Cretaceous Period rocks and limestone of the Niobrara Chalk formation characterize the geology of this region. Because of the paucity of timber in this area, settlers used limestone for buildings and fence posts; participants may also wish to look for fossils in stones.

Paper abstracts are due by September 15; send in MS Word to **Greg Farley** at gfarley@fhsu.edu.

Schedule of Events

An informal reception, bird quiz and registration will be held Friday evening. Paper sessions on ornithological studies in Kansas will be held Saturday in 169 Albertson Hall.

The banquet Saturday night will feature **Geoff Hill** of Auburn University. He will speak about his most recent book on bird coloration, as well as ongoing efforts to document Ivory-billed Woodpeckers in the Choctawhatchee River Basin of the Florida panhandle.

Field trips will be led by individuals with strong connections to the region: **Greg Farley, Terry Mannell, Mike Rader, and Scott Seltman.**

Friday, October 3

7:00 p.m.—Informal reception at Memorial Union. Refreshments and a bird quiz will be provided at the Sunset Lounge.

Saturday, October 4

7:15 a.m.—Bird walk. Meet at south entrance of Albertson Hall.

7:45 a.m.—Registration begins.

8:30 - 8:45 a.m.—Welcome.

8:45 - 9:00 a.m.—Business meeting.

9:00 a.m. - noon—Paper session.

Noon - 1:30 p.m.—Lunch on your own; KOS board will meet in Albertson 303.

1:30 - 2:30 p.m.—Birdwatchers' Hour.

2:30 - 5:00 p.m.—Paper session. Silent auction ends.

5:00 - 5:30 p.m.—Business meeting.

6:00 - 6:30 p.m.—Social.

6:30-9:00—Banquet—Robbins Endowment Center adjacent to Gross Memorial Coliseum.

Sunday, October 5

6:30 a.m.—Half-day field trips depart to Wilson Reservoir, Cedar Bluff Reservoir, Ellis County hot spots and the Fort Hays State University bird banding station.

Noon—Compilation at Frontier Park.

Lodging and Dining

Lodging opportunities abound in Hays:

www.haysusa.com/html/accommodations.html.

There is no home football game that weekend, but make reservations early. Information on dining options may also be found on the same Web site.

Registration

Please fill out the registration form on the back page of this issue of *The Horned Lark*.

Other than the Friday reception, Saturday snack breaks, Saturday banquet and Sunday lunch, participants are responsible for meals and snacks. All participants must sign the liability release on the registration form in order to participate in any portion of this meeting.

Silent auction

Members and guests are strongly encouraged to bring donated items for the Silent Auction. Suitable donations include birding-themed equipment, field guides, bird houses, bird baths and optics. All proceeds go to the KOS Student Research Fund.

Remembering Marvin Schwilli

There are not many people in this world so universally respected as **Marvin Schwilli**. Those who knew him and his honest and direct—but easy—demeanor understood why he didn't have an enemy in the world. On a very rare occasion, I would hear Marvin say something negative about a Kansas Department of Wildlife and Parks administrator and that caught my attention. If you ever heard something like that from him, you knew it was serious—and true.

Marvin was also the Kansas Forestry, Fish and Game (now KDWP) employee whom I visited with about job opportunities. It was around 1971 when I tagged along with my roommate to Cheyenne Bottoms. We stopped in the office and Marvin gave us his time and thoughts in his regularly generous way—a manner I found later to be a remarkably pleasant and consistent personality trait.

It was a humbling honor for me to have been Marvin's last supervisor at KDWP. The small amount of time that **Jerry Horak** and I spent with Marvin his last year of employment was incredibly special. Jerry was in training to take over Marvin's job. We were able to spend precious time in southeast Kansas netting butterflies and checking out the cool herps.

As Marvin's final year at work wound down, he gave me a compliment. I never had a better reward—better than any formal evaluation that ever came

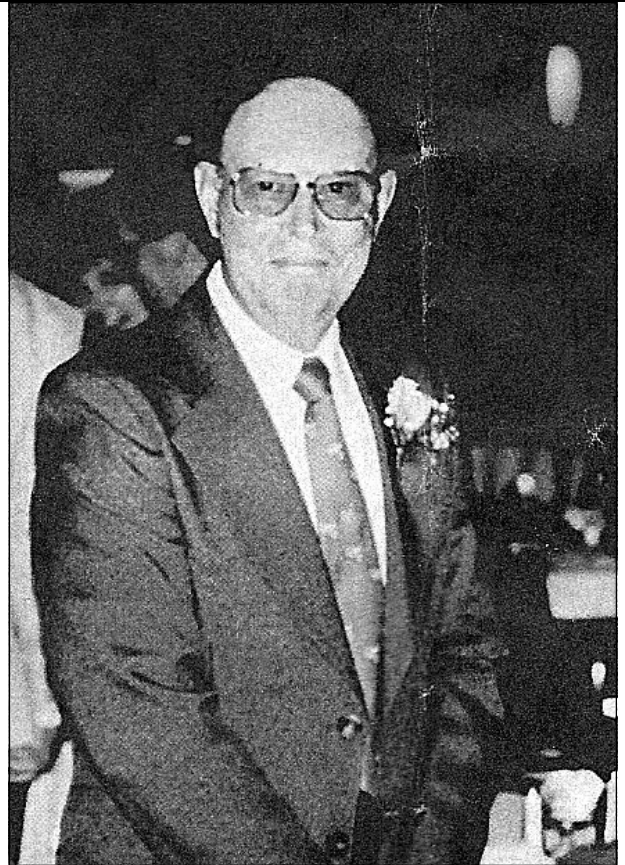
down—than that remark from a man I greatly respected. At his funeral, it was so fitting to experience the Painted Lady and other butterflies flitting around with the Northern Mockingbird singing incessantly. I saw folks glance at each other with that look in their eye about how right that was. Marvin was a good scientist, a good field biologist and a good man.

—*Ken Brunson*

Marvin showed me shorebirds at Cheyenne Bottoms in the spring of 1970, where my wife Carleen and I first met him. He was very friendly and pleasant and an especially sharp birder. Later I had the opportunity to bird with him in Emporia, where we lived for ten years.

The last time I saw Marvin was in the early 1990s at Schermerhorn Park, in Galena (Cherokee County). He was netting butterflies and birding at the same time. Together we enjoyed watching the Cliff Swallows under the Shoal Creek bridge. We had a wonderful visit about old times and swallows and butterflies. Thanks, Marvin, it was my pleasure to have known you. We'll go birding again someday.

—*Larry Herbert*



One of the founding fathers of KOS has departed our plane of existence. On my first trip to a KOS meeting around 1970, I was lucky to ride in the car at Cheyenne Bottoms with Marvin and **Jerome Robbins**. Those were the glory years at the Bottoms and it was a wild day of birding with many Ruddy Turnstones. The highlight was a pair of Sabine's Gulls at close range along the levee road. At the time I'd never seen anything approaching that in terms of rarity. I remember he told me to remember the moment because not many Kansas birders got to see those birds.

At the joint KOS/OOS meeting in 2000 at Black Mesa, I

ng: Mentor, friend, discoverer

gave out some door prizes for awards such as longest-standing members of each group, best bird found and the like. Marvin was there and won kudos for longest-standing KOS member in attendance. I recounted the Sabine's Gull story and the lasting impression it had made on me as a kid.

After the meeting, he shook my hand, got in his car and drove off. I never saw him again. He had a long twilight at the end of his life and I'm sure that was painful for his family. I'll always have fond memories of Marvin and I'm glad I was able to express my appreciation to him in a public way while he was still alive and well. He was one of the original Kansas birders and made a lasting contribution to the things that mattered to him. One of the good ones is gone now.

—Pete Janzen

I first met Marvin at one of the earlier KOS meetings I

attended in the 1960s. His papers were always stimulating and his enthusiasm was high. Marvin was stationed then at Cheyenne Bottoms. I do not think he ever considered that birders did not pay their way. He was a model biologist who bridged the span between sportsmen and bird watchers.

His contributions to Kansas ornithology are numerous. I quickly scanned the three KOS Bulletin indices and found 37 papers and notes that he authored or co-authored on Kansas birds. Additionally, he published four Kansas-related articles in the Wilson Bulletin and Condor. His two-year study of the Lesser Prairie-Chicken in southwest Kansas during the early 1950s culminated with a 100-page report to the Kansas Forestry, Fish and Game Commission. Marvin's routine report was more than most of us did for the theses required for our advanced degrees.

Marvin often did the compilations for the KOS field trips. His reading of the checklist was always memorable. When he reached the Rufous-sided Towhee, he read it as "Toyee." At the 1994 Garden City KOS compilation meeting, I asked Marvin to compile the list of birds observed. I was hoping some of the new members might experience and hold onto a great memory of a great man.

One winter weekend, I escorted a couple of carloads of Colorado birders to Emporia. Marvin met us in his little pickup, waiting for us on the longspur road south of Lyon State Lake. He greeted us with his warm smile and enthusiastic hello. That day was the last time I saw Marvin.

—Thomas G. Shane

Best Bird of the Year

(nomination form for unusual or rare birds observed since October 1, 2007)

Species _____

Observers _____

Location _____

Mail or e-mail your nominations to **Max C. Thompson**, 1729 E. 11th Ave. Winfield, KS 67156; maxt@cox.net.

George Miksch Sutton: Artist, Scientist, and Teacher: A book review

By Thomas G. Shane

George Miksch Sutton:
Artist, Scientist, and Teacher.
By Jerome A Jackson.
University of Oklahoma Press:
Norman. 2007: 239 pp., ISBN:
978-0-8061-3745-2, \$29.95
(cloth).

Perhaps most Kansas birders would not ordinarily choose to read about a professor from Oklahoma.

However, **George M. Sutton** was probably the last great ornithologist who bridged the worlds of the professional and amateur ornithologists and brightened our lives with some of the finest bird art of the twentieth century. Sutton's books describe his numerous trips to the Arctic and Mexico, mentally putting the reader by his side. His impact crossed over the borders of Oklahoma and had numerous positive effects on ornithologists and birdwatchers across North America.

The development of ornithology in Kansas received tremendous input from Sutton as well as enhancing the careers of numerous Kansas students. Three of Sutton's Ph.D. students took their first university positions in Kansas after graduating from the University of Oklahoma. During the late 1950s, **J.C. Johnson** entered the faculty at Pittsburg State University while **David F. Parmelee** joined the Emporia

State University faculty. In 1960, **Charles A. Ely** took a professorship at Fort Hays State University.

Bird students of Kansas also sought out Sutton because of his reputation. During the late 1960s, **Merril McHenry** left Kansas to pursue his Ph.D. with Sutton. **Jean** and **Richard Graber**, who are famous for their many discoveries of new birds in southwest Kansas, also earned their doctorates at the University of Oklahoma under Sutton. The author of this biography earned his Ph.D. from the University of Kansas with academic ties back to **Alden Miller** and **Joseph Grinnell** of the University of California. Despite this, Jackson chose to research Sutton from the Cornell University lineage of ornithologists.

George Sutton indeed was the ornithologist most admired by his contemporaries, students and the public during his active and productive life, which spanned the middle half of the twentieth century.

In 15 chapters, Jackson includes Sutton's ancestors, his birth, the numerous childhood homes, his early interest in birds, his college years, his early jobs in ornithology, his graduate school years at Cornell, and the long trip to the University of Oklahoma. He also includes an appendix listing his students,

notes on source materials, and bibliographies of both published and illustrated works by Sutton.

Additionally the book includes 26 colored plates of his art, many of which are drawn from private collections and have never been published elsewhere. I would surmise that the same procedure was used with the text portion of the biography. Jackson's stories are not often those from Sutton's books. Jackson spent approximately 20 years visiting Sutton himself, interviewing those who knew Sutton, and obtaining information and stories from letters to compile a complete portrayal of this illustrious man.

I was fortunate enough to have heard Sutton speak at two meetings and have read a few of his books. Jackson's book has certainly given me a better overview of Sutton's life, his accomplishments, hardships and tremendous generosity. I would highly recommend purchasing and reading this biography.

You may reach Tom Shane at tom.shane@sbcglobal.net.

Kansas spring season roundup

March 1– May 31, 2008

Mark Corder, compiler

The spring of 2008 produced some exciting birds. Three lucky birders observed and photographed a Common Crane at Quivira National Wildlife Refuge in late March. They submitted a report to the Kansas Birds Records Committee. If accepted, this would be a first state record.

Rosella Royer reported a Swallow-tailed Kite flyover in Brown County towards the end of May. Given the way that this species has been observed of late, it appears one must be in the right place at the right time in order to add the bird to a Kansas life list. Perhaps this and previous recent sightings indicate that the Swallow-tailed Kite may make a return to the state in larger numbers in the future.

The Pine Siskin made a spectacular return in terms of numbers and locations across the state. **Max Thompson** reported banding 789 Pine Siskins during the period and stated that this was the biggest invasion of Pine Siskins in years. Additional confirmation was provided by **Pete Janzen**, who

reported Pine Siskins in eleven western counties in early May and stated that numbers across western Kansas were very high.

Observers reported Black-bellied Whistling Ducks in six different counties including four individuals seen at Antioch Park in Johnson County. Cooper's Hawks are reported in good numbers with many breeding observations.

Another exciting development reported during the spring was an attempt at nest building by a pair of Osprey in Jackson County. Kansas birders have longed for the day that the Osprey would become established as a breeding species in the state. Unfortunately, this attempt failed.

Tom and Sara Shane photographed a Black-throated Sparrow at their residence in Garden City in mid-April. **Scott Seltman, Mike Rader and Rob Penner** reported a Gray Flycatcher in the Colby area in early May. There are fewer than ten Kansas records of both of these elusive species.

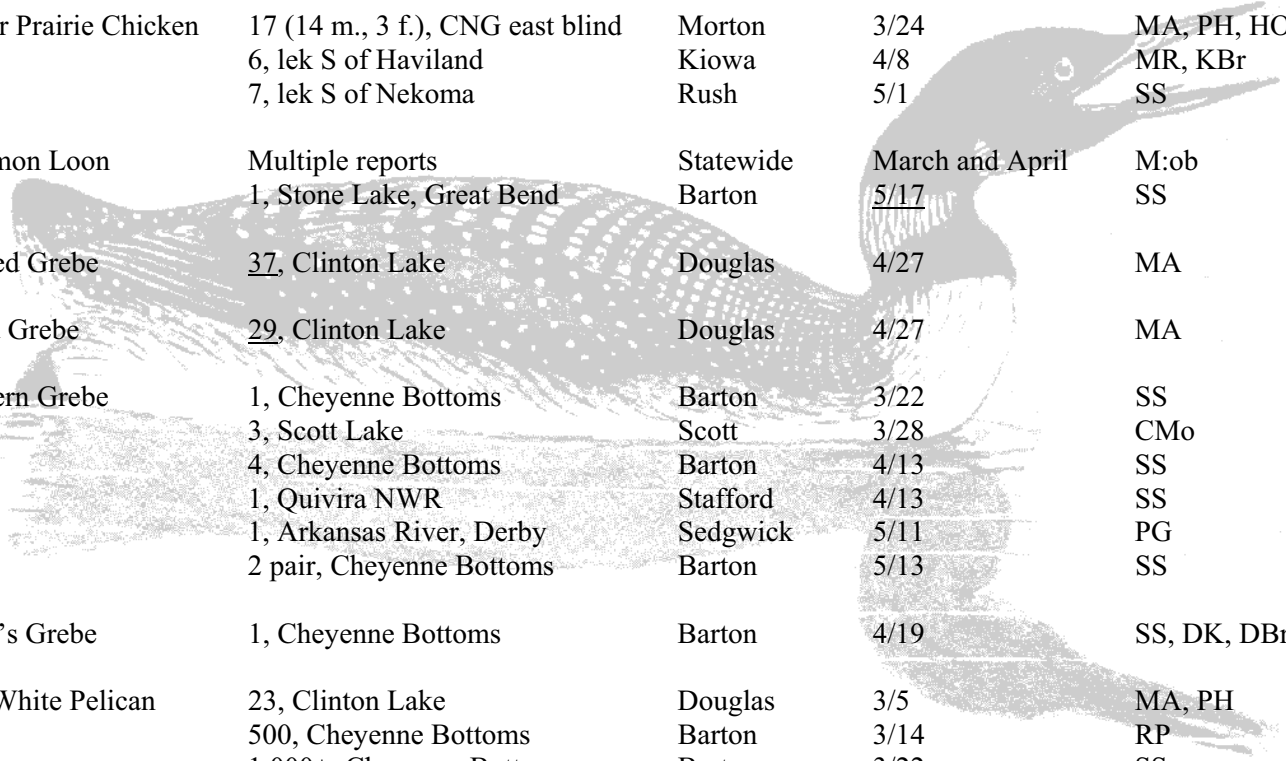
The spring warbler migration was particularly lackluster. Only nine species made the roundup list: five Blue-winged Warblers from three different counties, three each of Golden-winged, Hooded and Black-throated Blue Warblers, about 15 Yellow-throated Warblers, and single reports of Cape May, Bay-breasted, Pine and Worm-eating warblers. The unusual spring weather probably contributed to the lower number of warbler reports.

Another exciting and encouraging development from this period is the number of observers providing reports. Finding and reporting rare or unusual birds adds to the avian information base. Everyone is encouraged to remain active and alert and to err on the side of reporting something rather than not for fear of being wrong. When possible, get a photo of the bird.

You may reach **Mark Corder** at buddesystem@msn.com

Species	Number and Location	County	Date	Observer(s)
Blk-blld Whstlng-Duck	6 seen on Little Arkansas River	Sedgwick	4/17	HG
	4, Antioch Park	Johnson	5/2	ML, NA
	2, Baker Wetlands	Douglas	5/3	SI
	1, Baker Wetlands	Douglas	5/7-10	RA
	5, Cheyenne Bottoms	Barton	5/23	RP, KGr
	1, Derby	Sedgwick	5/30	BG
	1, Lassiter Marsh	Jefferson	5/31	DLS
Ross's Goose	1, Sharon Springs sewage ponds	Wallace	4/13	PJ
Trumpeter Swan	3, Tuttle Creek State Park	Riley	3/3	LJ
	8, Prairie Park Nature Center	Douglas	3/10	MB

Species	Number and Location	County	Date	Observer(s)
Trumpeter Swan	3, Tuttle Creek Reservoir	Riley	3/12	DB
	4, (3 ad., 1 imm.), Quivira NWR	Stafford	3/22	SS
	2 (1 ad., 1 imm.), Quivira NWR	Stafford	3/24	MR
	1, imm., Delaware Marsh, Perry Lk.	Jefferson	3/25	BW
Tundra Swan	3 (2 ad., 1 imm.), Quivira NWR	Stafford	3/24	MR
	2 ad., Quivira NWR	Stafford	3/28	MR
Cinnamon Teal	1, on pond, N. Wichita	Sedgwick	3/19	CA
	<i>Note: additional birds were subsequently reported in the Wichita area.</i> Pair, Elkhart sewage lagoons	Morton	4/19-20	MG
Greater Scaup	1, Tuttle Creek State Park	Riley	3/3	LJ
	2, Saline County State Lake	Saline	3/16	DL
	2, on pond, Junction City	Geary	3/17	CO
	1, on Kingman State Lake	Kingman	4/10	MR
Surf Scoter	1, 1 st spring f., Lake Quivira	Johnson	<u>5/13</u>	MC
Black Scoter	1, f., Shawnee Mission Lake	Johnson	<u>4/11-23</u>	ML, DS
	1, f., Clinton Lake	Douglas	<u>5/17-27</u>	JW, JCo
Barrow's Goldeneye	1, Twin Lakes, Wichita	Sedgwick	3/15	BR, MN
Lesser Prairie Chicken	17 (14 m., 3 f.), CNG east blind	Morton	3/24	MA, PH, HO
	6, lek S of Haviland	Kiowa	4/8	MR, KBr
	7, lek S of Nekoma	Rush	5/1	SS
Common Loon	Multiple reports	Statewide	March and April	M:ob
	1, Stone Lake, Great Bend	Barton	<u>5/17</u>	SS
Horned Grebe	<u>37</u> , Clinton Lake	Douglas	4/27	MA
Eared Grebe	<u>29</u> , Clinton Lake	Douglas	4/27	MA
Western Grebe	1, Cheyenne Bottoms	Barton	3/22	SS
	3, Scott Lake	Scott	3/28	CMo
	4, Cheyenne Bottoms	Barton	4/13	SS
	1, Quivira NWR	Stafford	4/13	SS
	1, Arkansas River, Derby	Sedgwick	5/11	PG
	2 pair, Cheyenne Bottoms	Barton	5/13	SS
Clark's Grebe	1, Cheyenne Bottoms	Barton	4/19	SS, DK, DBr
Am. White Pelican	23, Clinton Lake	Douglas	3/5	MA, PH
	500, Cheyenne Bottoms	Barton	3/14	RP
	1,000+, Cheyenne Bottoms	Barton	3/22	SS
	3,000+, Cheyenne Bottoms	Barton	4/13	SS
Neotropic Cormorant	1, Cheyenne Bottoms	Barton	5/17	SS
Least Bittern	5, Winfield Gun Club	Sumner	5/19	GY, MT

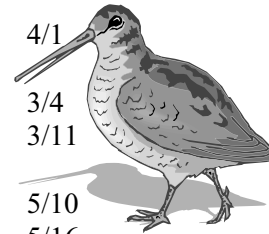


Species	Number and Location	County	Date	Observer(s)
Black-crowned Night-Heron	75, Cheyenne Bottoms	Barton	4/30	RB, MR
Black Vulture	1, Schermerhorn Park	Cherokee	5/7	LP
Osprey	Pair at nest, Banner Creek Lake	Jackson	5/19	GK
Swallow-tailed Kite <R>	1, [possible]	Brown	5/29	RR
Mississippi Kite	1, Fort Scott	<u>Bourbon</u>	5/30	DKe
Bald Eagle	2 pair nesting, Topeka area	Shawnee	4/9	MB
Sharp-shinned Hawk	1, south side KU Campus 1, Augusta City Lake	Douglas Butler	3/23 3/23	PW KG
Cooper's Hawk	Multiple breeding reports	Statewide	March-May	M:ob
Northern Goshawk	1, Cheyenne Bottoms 1, flyover, Blue Rapids res. 1, imm. chased by crows E of Pratt	Barton Marshall Pratt	3/12 3/29 4/10	RP TP MR
Red-shouldered Hawk	Pair nesting E of Manhattan	Pottawatomie	4/16	DM
Rough-legged Hawk	1, f., Cheyenne Bottoms	Barton	4/13	SS
Golden Eagle	1, imm., Flint Hills	Wabaunsee	4/15	MG
Merlin	1, f., upland prairie 1, f. W of Logan State Lake 1, Seltman farmstead	Anderson Logan Pawnee	4/10 4/13 4/30	BB,MRo,SR,JK PJ SS
Peregrine Falcon	1, E of Wathena 1, along Arkansas River, Derby 1, Clinton Lake dam 1, McPherson Valley Wetlands 1, Cheyenne Bottoms 2, Quivira NWR 1, flying north, E of Goddard 1, Clinton Lake, Outlet Park 1, flyover, Baker Wetlands 1, Slate Creek Marsh	Doniphan Sedgwick Douglas McPherson Barton Stafford Sedgwick Douglas Douglas Sumner	4/15 4/17 4/27 4/27 4/30 4/30 5/3 5/6 5/7 5/19	DC JC MA GF, JN RP, MR RP, MR HG MA RA GY, MT
Prairie Falcon	1, flew over Tuttle Creek dam 1, NW Pawnee County	Riley Pawnee	3/13 3/23	LJ SS
Black Rail	1, Quivira NWR 3, Quivira NWR	Stafford Stafford	4/30 5/3	RP, MR DS, BG
King Rail	1, Quivira NWR	Stafford	4/30	RP, MR
Virginia Rail	4-5, Quivira NWR	Stafford	4/30	RP, MR

Species	Number and Location	County	Date	Observer(s)
Virginia Rail	1, Baker Wetlands	Douglas	5/6	ML
	2, Baker Wetlands	Douglas	5/7	RA
Sora	1, Baker Wetlands	Douglas	4/16	MA
	5-4, Baker Wetlands	Douglas	4/27	RA
	10+, Baker Wetlands	Douglas	5/5	RA, MA
	2, KCP&L Wetland, Gardner	Johnson	5/6	ML
	11, Baker Wetlands	Douglas	5/9	RA, MA
Common Moorhen	1, Baker Wetlands	Douglas	5/10	RA
Sandhill Crane	<u>30,000+</u> , Quivira NWR	Stafford	3/2	SS
<u>Common Crane</u>	<R>1, Quivira NWR	Stafford	3/23	MA, PH, HO
Whooping Crane	2 ad., small playa NW of Preston	Pratt	4/8	MR, KBr
Black-bellied Plover	50+, Cheyenne Bottoms	Barton	5/13	SS
	133, Cheyenne Bottoms	Barton	5/16	HHa
	47, Lake Afton	Sedgwick	5/19	PJ
	60, Slate Creek Marsh	Sumner	5/19	GY, MT
Am. Golden Plover	<u>Several hundred</u> near Burden	Cowley	5/5	BS
Snowy Plover	60+, Quivira NWR	Stafford	4/19	MR
	267, Quivira NWR	Stafford	5/17	PJ
Piping Plover	1, Kirwin Lake	Phillips	4/16	TM
	3, Quivira NWR	Stafford	4/26	SS
Greater Yellowlegs	1, Cheyenne Bottoms	Barton	3/2	SS
	3 E of Quivira NWR	Reno	3/2	SS
Lesser Yellowlegs	2, KDWP Hatchery Ponds	Pratt	4/1	MR, KBr
Whimbrel	1, Konza Prairie	Riley	5/3	BS
	1, Quivira NWR	Stafford	5/4	DS, BG
	1, Quivira NWR	Stafford	5/17	PJ
Long-billed Curlew	11, field SW of Howell	Gray	4/14	GF
Hudsonian Godwit	38, Quivira NWR	Stafford	4/19	MR
Marbled Godwit	7, Cheyenne Bottoms	Barton	4/13	SS
	45, Quivira NWR	Stafford	4/19	MR
Ruddy Turnstone	2, Quivira NWR	Stafford	4/26-27	SS, RG
	3, Cheyenne Bottoms	Barton	5/16	HHa
	7, Quivira NWR	Stafford	5/17	PJ
	2, Clinton Lake	Douglas	5/17	JW, JCo
	3, Cheyenne Bottoms	Barton	5/17	SS
	1, Slate Creek Marsh	Sumner	5/19	GY, MT



Species	Number and Location	County	Date	Observer(s)
Red Knot	2-3, Quivira NWR	Stafford	5/15	MR
Sanderling	32, Quivira NWR	Stafford	5/15	MR
	23, Cheyenne Bottoms	Barton	5/16	HHa
	<u>110</u> , Quivira NWR	Stafford	5/19	MR
Baird's Sandpiper	25, KDWP Hatchery Ponds	Pratt	4/1	MR, KBr
Dunlin	1, Quivira NWR	Stafford	<u>3/22</u>	SS
	15, Quivira NWR	Stafford	5/10	SS, DK
	11, Quivira NWR	Stafford	5/17	PJ
Buff-breasted Sandpiper	1, Colwich Sod Farms	Sedgwick	5/9	D&FV
	7, Colwich Sod Farms	Sedgwick	5/11	PJ
	50, Colwich area	Sedgwick	5/12	B&NB
	11, Quivira NWR	Stafford	5/15	MR
Short-billed Dowitcher	1, Quivira NWR	Stafford	4/26	SS
	2, Quivira NWR	Stafford	5/15	MR
	3, Quivira NWR	Stafford	5/17	PJ
Long-billed Dowitcher	2, KDWP Hatchery Ponds	Pratt	4/1	MR, KBr
American Woodcock	1, southern Douglas County	Douglas	3/4	BB
	3, rural Leavenworth County	Leavenworth	3/11	DW
Wilson's Phalarope	<u>6,000</u> est., Quivira NWR	Stafford	5/10	SS, DK
	<u>10,000</u> est., Cheyenne Bottoms	Barton	5/16	HHa
Red-necked Phalarope	12, Wilson sewer ponds	Ellsworth	5/11	MR
	3, Quivira NWR	Stafford	5/12	GF, JN, BH
	17, Quivira NWR	Stafford	5/17	PJ
	30 scattered, Cheyenne Bottoms	Barton	5/17	SS
	4, Slate Creek Marsh	Sumner	5/20	GY, MT
<u>Red Phalarope</u>	1, Quivira NWR	Stafford	5/4	DS, BG
Franklin's Gull	3, Cheyenne Bottoms	Barton	<u>3/2</u>	SS
	1, Tuttle Creek Reservoir	Riley	<u>3/12</u>	DB
Thayer's Gull	1, 1 st class, Clinton Marina	Douglas	3/5	MA, PH
<i>Kumlien's</i> Iceland Gull	1, 1 st class, Clinton Lk	Douglas	3/1	MA
Lesser Black-backed Gull	1, ad., Clinton Marina	Douglas	3/5	MA, PH
Glaucous Gull	1, ad., Clinton Marina	Douglas	3/5	MA, PH
Common Tern	1, Clinton Lake	Douglas	4/27	MA
Least Tern	1, Baker Wetlands	Douglas	5/27	RA



Species	Number and Location	County	Date	Observer(s)
White-winged Dove	Multiple reports	Statewide	March-May	M:ob
Inca Dove	1, res., Farlington Lake	Crawford	5/3	MH
Greater Roadrunner	1, residential area, west Wichita	Sedgwick	4/10	PHa
	1, S of Garfield	Pawnee	5/13	DK
Barn Owl	2, abandoned farmstead	Logan	4/13	PJ
<u>N. Saw-Whet Owl</u>	1, Lawrence residence	Douglas	3/2	PW
Chimney Swift	1, Shawnee Mission Lake	Johnson	<u>4/7</u>	ML
Lddr-bckd Wdpkr	1, f., Stockdale Cove, Tuttle Creek Res.	Riley	3/15	PJ, KG
	1, E of K-27 campground	Morton	4/20	MG
<u>Gray Flycatcher</u>	1, K-State Exp. Station, Colby	Thomas	5/4	SS, MR, RP
Say's Phoebe	2, Pawnee County	Pawnee	3/26	SS
Ash-throated Flycatcher	1, heard, Point of Rocks, CNG	Morton	4/20	MG
	1, seen, KOS fieldtrip	Logan	5/3	PJ
Cassin's Kingbird	1, Quivira NWR	<u>Stafford</u>	5/10	SS, DK
Loggerhead Shrike	4, SW of Hays	Ellis	4/18	TM
	Many, numerous locations	Morton	4/20	MG
Northern Shrike	1, juv., E of Quivira NWR	Reno	3/2	SS
<u>Pinyon Jay</u>	1, rural residence	Russell	5/7	DKI
Black-billed Magpie	2, NW Clay County	Clay	3/14	HH
Fish Crow	1, flying over Clinton Dam, calling	<u>Douglas</u>	4/25	MA
	2, Frontenac sewage lagoons	Crawford	4/29	RM
	1, calling, Burcham Pk., Lawrence	Douglas	5/8	RA
	3, Derby	Sedgwick	5/14	PJ
	12, McClungs and Rainbow Bend Br.	Cowley	5/20	GY, MT
Chihuahuan Raven	2, E of Hugoton	Stevens	4/20	MG
Purple Martin	1, Thompson res., Winfield	Cowley	<u>3/13</u>	MT
	3, Wichita residence	Sedgwick	3/16	LM
Tree Swallow	75+, Pratt County Lake	Pratt	4/1	MR
	50+, KDWP Hatchery Ponds	Pratt	4/1	MR, KBr
N. Rough-winged Swallow	2, KDWP Hatchery Ponds	Pratt	4/1	MR, KBr
Barn Swallow	2, WSU Campus	Sedgwick	4/2	CM



<u>Species</u>	<u>Number and Location</u>	<u>County</u>	<u>Date</u>	<u>Observer(s)</u>
Mountain Chickadee	1, Elkhart	Morton	3/24	MA, PH, HO
Rock Wren	1, KU campus	Douglas	4/25	PW
Gray-cheeked Thrush	1, zoo, Garden City	<u>Finney</u>	5/11	T&SSh
Wood Thrush	2-3, Derby	<u>Sedgwick</u>	5/13	JC
Townsend's Solitaire	1, Botanica, Wichita 3, Elkhart	Sedgwick Morton	3/19 3/24	RB MA, PH, HO
Curve-billed Thrasher	1, CNG workstation	Morton	4/20	MG
American Pipit	30+, Clinton Lake Golf Course 200+, burned pasture	Douglas Anderson	3/17 4/9	MP, KM BB,MRo,SR,JK
Sprague's Pipit	2, hayed prairie near Welda	Anderson	4/9	BB,Mro,SR,JK
Cedar Waxwing	35, Lawrence neighborhood Breeding pair, rural area	Douglas Sedgwick	3/4 5/24	JL MC
Blue-winged Warbler	1, Shawnee Mission Park 1, Rice Tract of Baldwin Woods 1, Baker Wetlands 1, Overland Park Arboretum 1, Oak Park, Wichita	Johnson Douglas Douglas Johnson Sedgwick	4/22 5/4 5/5 5/13 5/15	ML GFr RA, MA J&LB PG
Golden-winged Warbler	1, Baker Wetlands 1, rural residence 1, near cemetery, Ft. Leavenworth	Douglas Leavenworth Leavenworth	5/7 5/11 5/10	RA JS DW, JS
Cape May Warbler	1, Antioch Park	Johnson	5/2	NA,DS
<u>Black-thrted Blue Warbler</u>	1m., 1f., Oak Park, Wichita 1, Overland Park Arboretum	Sedgwick Johnson	5/7-9 5/13	R&PB, m:ob BW
Yellow-throated Warbler	4-5, Ft. Leavenworth Bottoms 3+ east of Bonner Springs 4, Shawnee Mission Park 1, Baker Wetlands 1, Oak Park, Wichita	Leavenworth Wyandotte Johnson Douglas Sedgwick	4/19 4/21 4/22 5/9 5/27	DW DS ML RA, MA PG
Bay-breasted Warbler	1, Crane Park, Derby	Sedgwick	5/13	JC
Pine Warbler	1, residence, Tuttle Creek Res.	Riley	3/19	DB
Worm-eating Warbler	1, Oak Park, Wichita	Sedgwick	5/15	PG
Hooded Warbler	1, Garden City residence 1, Ft. Leavenworth Bottoms 1, Overland Park Arboretum	Finney Leavenworth Johnson	4/21 5/3 5/23	MO, T&SSh DW J&LB



Species	Number and Location	County	Date	Observer(s)
Clay-colored Sparrow	37, residence, Garden City	Finney	5/11	T&SSh
Brewer's Sparrow	1, residence, Garden City	Finney	5/11	T&SSh
<u>Black-thrtd Sparrow</u>	1, Shane res., Garden City	Finney	4/16	T&SSh
Lark Bunting	1, Konza Prairie	<u>Riley</u>	5/20	BS
Nelson's Shrp-tld Sprrw	1, Baker Wetlands 1-2, Baker Wetlands	Douglas Douglas	5/16-18 5/27	MA RA
Henslow's Sparrow	4+ singing, upland prairie	Anderson	4/9	BB,MRo,SR,JK
Lincoln's Sparrow	1, res., Wichita	Sedgwick	<u>3/3</u>	PJ
Golden-crowned Sparrow	1, m., feeder, Oxford	Sumner	4/22	WC, MT
Smith's Longspur	4+, hayed prairie near Welda	Anderson	4/9	BB,MRo,SR,JK
Chstnt-cllrd Lngspr	100, NW Pawnee County	Pawnee	3/23	SS
Black-headed Grosbeak	1, residence, Newton 1, Seltman residence	Harvey Pawnee	4/25 5/19	GF SS
Lazuli Bunting	1, residence, Tuttle Creek Res. 1, Anneberg Park, Manhattan 1, Baker Wetlands	Pottawatomie Riley Douglas	5/1 5/5 5/13	DB LJ SRo
Painted Bunting	1, residence, Tuttle Creek Res. 3, S. Arkansas River Greenway, Derby 1, Clarion Park, Topeka	Pottawatomie Sedgwick Shawnee	5/1 5/6 5/25	DB JC DG
Bobolink	50 males, rural Butler County 150, Colwich Sod Farms	Butler Sedgwick	5/7 5/11	BB PJ, m:ob
Yellow-headed Blackbird	30, Bloomington Area	Douglas	5/6	ML
Purple Finch	25, feeders, rural residence 7, Augusta City Lake 6, feeder, Hays residence	Leavenworth Butler Ellis	3/16 3/23 3/30	DW KG MS, TM
Red Crossbill	5, feeder, Pratt 15, Seltman farm 15-20, feeder, Hays residence	Pratt Pawnee Ellis	3/2 3/26 3/30-4/14	KB SS MS, TM
Pine Siskin	60+, feeder, Elkhart	Morton	3/24	MA, PH, HO



Key:

- Underlined dates, locations or comments indicates unusual, late or early sightings.
- Underlined species indicates unusual species.
- Underlined species in bold** indicates species with no records or fewer than 10 records for Kansas.
- <D> indicates documentation was submitted to Kansas Bird Records Committee.

Abbreviations: Cimarron National Grassland (CNG), National Wildlife Refuge (NWR), multiple observers (m:ob), Bridge (Br.), Park (Pk.), Lake (Lk.), residence (res.), adult (ad.), juvenile (juv.), male (m.), female (f.), immature (imm.).

Observers: Nic Allen, Michael Andersen, Charles Anderson, Robert Antonio, Bill and Nancy Beard (B&NB), Kevin Becker, Roy Beckemeyer, Roy and Pat Beckemeyer (R&PB), Marty Birrell, John and Laura Bosnak (J&LB), Ken Brunson (KBr), Dave Bryan (DBr), Pat Buckhaults, Doris Burnett, Bill Busby, Jeff Calhoun, Wally Champeny, Donna Chance, Jan Conrad (JCo), Mike Cooper, Mark Corder, Bill Falk, George Frazier (GFr), Gregg Friesen, Matt

Gearheart, Dan Gish, Rob Graham, Harry Gregory, Bob Gress, Paul Griffin, Kevin Groeneweg, Karl Grover (KGr), Helen Hands (HHa), Peggy Haukap (PHa), Hoogy Hoogheem, Bob Hoops, Pete Hosner, Margaret Hoyle, Susan Iversen, Pete Janzen, Lowell Johnson, Don Kazmaier, Jeff Keating (JKe), Gary Keehn, Daniel Kerr (DKe), Jon King, Dave Klema (DKI), Robert Kruger, Mark Land, Dan LaShelle (DLS), Dan Larson, Jane Liggett, Linda Loomis, Linda Mallonee, Robert Mangile, Terry Mannell, Kathy McDowell, Cheryl Miller (CM), Carol Morgan (CMo), Dan Mulhern, Jim Nickel, Marie Osterbuhr, Chuck Otte, Hannah Owens, Tom Parker, Robert Penner, Linda Phipps, Marie Plinsky, Mike Rader, Ilse Rasmussen, Mark Robbins (MRo),

Sarah Roels (SRo), Ben and Mary Nelle Rogers, Stan Roth, Rosella Royer, Brett Sandercock, John Schukman, David Seibel, Scott Seltman, Tom and Sara Shane (T&SSh), Kylee Sharp, Marilyn Sim, Steve Sorensen (SSo), Max Thompson, Don and Fran Vannoy (D&FV), Bunnie Watkins, Phil Wedge, Dave Williams, Brad Williamson, Priscilla Wilson (PWl), Jeff Witters, Gene Young.

Statement of non-profit status and copyright: The Kansas Ornithological Society is a 501(c) 3 organization created for the study, conservation and enjoyment of wild birds. The Horned Lark is the membership newsletter of the society and all material contained herein is copyrighted.

How to submit KOS paper abstracts

The KOS fall meeting traditionally features papers given by scientists, students and birders.

To submit an abstract: Include the title of the presentation, the list of authors (use an asterisk to indicate the speaker), the institutional affiliation of the authors (if applicable), and a brief abstract of up to 250 words. Abstracts will be printed in the KOS meeting program. When you submit the abstract, please provide **four** additional pieces of information: 1) the multimedia equipment you will need; 2) whether you would prefer a shorter time slot; 3) whether you are eligible and would like to be considered for a

student presentation award; and 4) stage of program (undergraduate, graduate, or doctorate) if you are eligible for a student presentation award. Paper abstracts are due by September 15; please send in MS Word to **Greg Farley** at gfarley@fhsu.edu. In the subject line of the e-mail, please indicate the meeting and give your surname: "KOS 2008: Tiger."

Example abstract:

Interspecific competition with wildcats limits populations of jay-hawks in northeast Kansas. *Willie T. Wildcat* (*), *Division of Biology, Kansas State University*. Ongoing declines in autumn populations of jay-hawks (*Cyanorufa chalkii*) are a topic of

conservation concern in Kansas. To assess the role of interspecific competition with wildcats (*Felis purpula*) as a factor contributing to observed population trends, I conducted three-hour observation bouts of captive animals in large enclosed arenas. In competition trials, jay-hawks demonstrated a strong aversion to environments saturated with royal purple. Thus, interspecific competition from wild felids may be a limiting factor that controls foraging and reproductive success of jay-hawk populations in the state of Kansas. Effective conservation strategies for jay-hawks should include keeping cats indoors.

Registration Form

KOS fall meeting

October 3-5, 2008

Fort Hays State University, Ellis County

I (we) plan to attend the 2008 KOS spring meeting.

Name(s) _____

Address _____

Phone _____ E-mail _____

Registration Number ___ @ \$15.00 each* \$ _____

Saturday dinner Number ___ @ \$22.50 each \$ _____

Sunday lunch Number ___ @ \$6.00 each \$ _____

TOTAL \$ _____

*Registrations received after September 15 will be \$20.
Students will pay a \$5 registration fee unless they are presenting.

In submitting this registration I (we) understand that KOS is not responsible or liable for any accidents or injury that might be associated with the 2008 spring field meeting.



Please remit check or money order, payable to KOS, and mail this form with it to:

Terry Mannell
218 Northridge Dr.
Hays, KS 67601

Signatures _____

Date _____

Calendar of upcoming nature-related society meetings

Please contact these organizations directly for more information about their meetings.

Oct. 3-5 Kansas Native Plant Society, Hays.

Oct. 3-5 Kansas Herpetological Society, Smith County.

Oct. 10-12 Central Plains Society of Mammalogists, Warrensburg, MO.

Oct. 15-18 Kansas Association for Conservation and Environmental Education, Wichita.

Nov. 7-9 Kansas Herpetological Society, Wichita.

Dec. 2 Kansas Non-game Wildlife Advisory Council, Topeka.

Jan. 29-30 Kansas Natural Resources Conference, Wichita, including Great Plains Society of

American Forestry; Kansas Alliance for Wetlands and Streams; Kansas Chapter: American Fisheries Society; Kansas Chapter: Soil and Water Conservation Society; Kansas Chapter: The Wildlife Society; and Kansas Section: Society for Range Management.

Mar 6-7 Kansas Wildlife Federation, Manhattan.

May 1-3 KOS, Pittsburg.